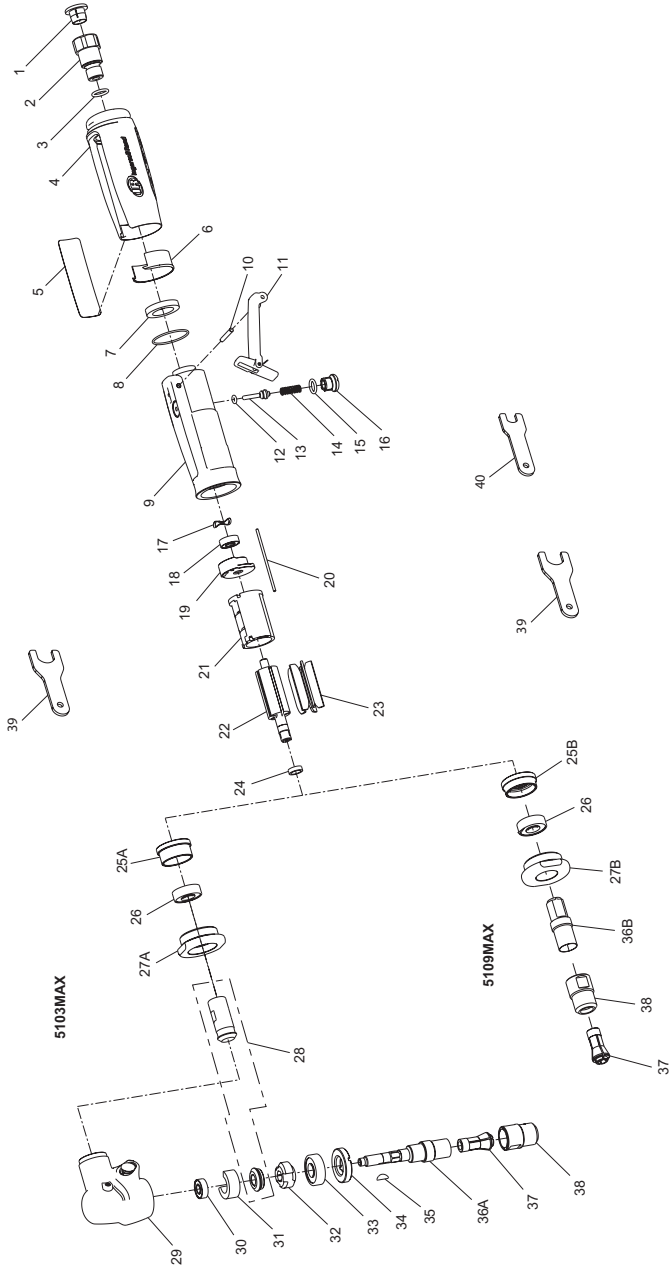


5103MAX and 5109MAX Air Die Grinder - Exploded View



(Dwg. 47679428)



5103MAX and 5109MAX Air Die Grinder - Parts List

Item	Part Description	Part Number	Item	Part Description	Part Number
1	Plastic Plug	PF-PLUG	21	Long Cylinder	RG1-3L
2	Inlet Bushing Assembly	5108MAX-A565	22	Rotor	RG1-53L-5
*	Inlet Bushing	---	23	Vane Pack (set of 5)	RG1-42L-LF-5
*	Inlet Screen	---	24	Spacer	RG1-448
3	O-Ring	170-283	25A	Endplate for 5103MAX	RG1-11A
4	Sleeve	5103MAX-747	25B	Endplate for 5109MAX	RG1-11
5	Tool Label		26	Bearing	301-24
	for 5103MAX	5103MAX-301	27A	Clamp Nut for 5103MAX	5102MAX-27A
	for 5109MAX	5109MAX-301	27B	Clamp Nut for 5109MAX	5108MAX-306
6	Gasket	5108MAX-223	28	Gear Pinion Set	5102MAX-A552-1.25
7	Muffler	5108MAX-311A		Pinion	---
8	O-Ring	RG1-216		Gear	---
9	Housing Assembly		29	Angle Housing	5103MAX-A550
	for 5103MAX	RG1-A40-25K	*	Angle Housing	---
	for 5109MAX	5109MAX-A40	*	Grease Fitting	---
	Housing	---	*	Locking Pin	---
*	Bushing	---	*	Bushing	---
10	Pin	RG1-120	*	Spring	---
11	Lever Assembly	RG1-A400	*	Spring Retainer	---
	Lever (stamp)	---	30	Bearing	RG1-22
	Lever Lock	---	31	Wick	RG1-560-1.25
*	Roll Pin	---	32	Hub	HG1-108
*	Spring	---	33	Bearing	5102MAX-24
12	Throttle Valve Seal	5108MAX-94	34	Cap	5102MAX-531
13	Throttle Valve	5108MAX-302	35	Pinion Key	301-579
14	Spring	RG1-51	36A	Collet Arbor for 5103MAX	5102MAX-591A
15	O-Ring	RG1-206	36B	Collet Arbor for 5109MAX	5108MAX-290
16	Valve Plug	RG1-266	37	Collet, 1/4in.	301-700
17	Wave Spring	RG1-278	38	Collet Nut	301-699
18	Bearing	RG1-22	39	Collet Nut Wrench for 5103MAX & 5109MAX models	301-39A
19	Rear Endplate	RG1-12	40	Collet Body Wrench for 5109MAX only	301-39B
20	Pin	RG1-56L			

* Indicates not illustrated.

Parts and Maintenance

When tool life has expired, it is recommended that the tool be disassembled, degreased and parts separated by material for proper recycling.

Tool repair and maintenance should only be carried out by an authorized Service Center.

Refer all communications to the nearest **Ingersoll Rand** office or distributor.

Related Documentation

Manuals can be downloaded from ingersollrand.com

For additional information, refer to:

Product Safety Information Manual 04580288.

Product Information Manual 47679427001.

