



TL-IQI-PLM

Edition 1

May 2025

DC Electric Tools

IQI Series

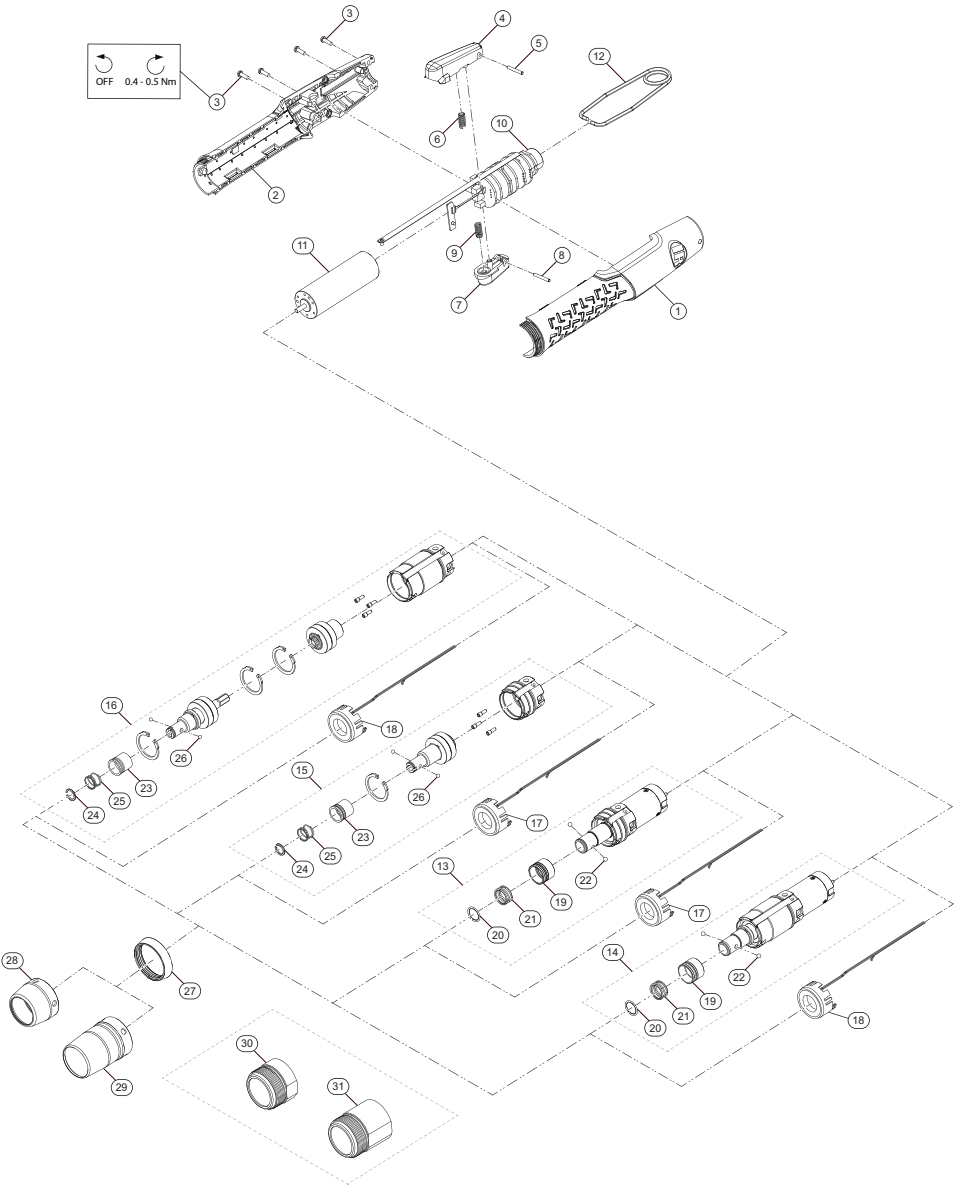
Parts Information



Save These Instructions



IQI2LC Series, Inline Screwdriver - Exploded View



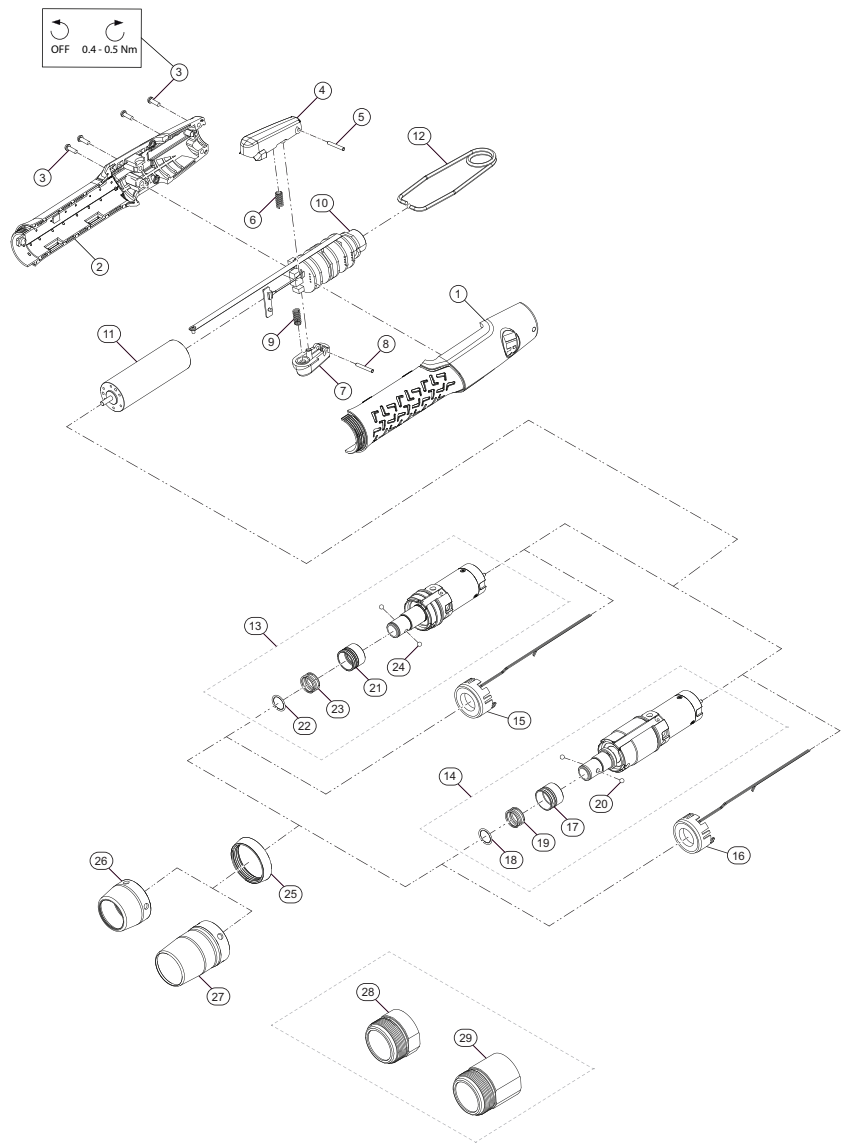
(Dwg. TL-IQI-PLM-1)

IQI2LC Series, Inline Screwdriver - Parts List

Item	Part Description	Part Number
*	Housing Kit	TK-IQI2LC-040
1	Left Housing Assembly	---
2	Right Housing Assembly	---
3	Housing Screw (4 required)	---
*	Forward Trigger Assembly	TK-IQI2LC-093F
4	Forward Trigger Cap	---
5	Forward Trigger Pin	---
6	Forward Trigger Spring	---
*	Reverse Trigger Assembly	TK-IQI2LC-093R
7	Reverse Trigger Cap	---
8	Reverse Trigger Pin	---
9	Reverse Trigger Spring	---
10	PCB Assembly Kit	---
*	For IQI2LC0017TQ4, IQI2LC0017PQ4, IQI2LC0017TM4, and IQI2LC0017PM4	TK-IQI2LC-499-T017
*	For IQI2LC0050TQ4 and IQI2LC0050PQ4	TK-IQI2LC-499-T050
*	For IQI2LC0100TQ4 and IQI2LC0100PQ4	TK-IQI2LC-499-T100
*	For IQI2LC0200TQ4 and IQI2LC0200PQ4	TK-IQI2LC-499-T200
*	For IQI2LC0250TQ4 and IQI2LC0250PQ4	TK-IQI2LC-499-T250
11	Motor Kit	TK-IQI2LC-054
12	Suspension Bail Kit	TK-IQI-365
13	Gearbox Assembly Kit (for Trigger Start tool)	---
*	For IQI2LC0050TQ4	TK-IQI2LC-750-050T
*	For IQI2LC0100TQ4	TK-IQI2LC-750-100T
*	For IQI2LC0200TQ4	TK-IQI2LC-750-200T
*	For IQI2LC0250TQ4	TK-IQI2LC-750-250T
14	Gearbox Kit (for Push to Start tool)	---
*	For IQI2LC0050PQ4	TK-IQI2LC-750-050P
*	For IQI2LC0100PQ4	TK-IQI2LC-750-100P
*	For IQI2LC0200PQ4	TK-IQI2LC-750-200P
*	For IQI2LC0250PQ4	TK-IQI2LC-750-250P
15	Front Mount Kit (for Trigger Start tool)	---
*	For IQI2LC0017TQ4	TK-IQI2LC-250-017TQ
*	For IQI2LC0017PM4	TK-IQI2LC-250-017TM
16	Front Mount Kit (for Push to Start tool)	---
*	For IQI2LC0017PQ4	TK-IQI2LC-250-017PQ
*	For IQI2LC0017PM4	TK-IQI2LC-250-017PM
17	LED Assembly Kit (for Trigger Start tool)	TK-IQI2LC-ALED-T
18	LED Assembly Kit (for Push to Start tool)	TK-IQI2LC-ALED-P
*	Hex QC Assembly Kit	TK-IQI-Q4
19	Collar, Quick Change	---
20	Retaining Ring	---
21	Spring	---
22	Ball (2 required)	---
*	Half-moon QC Assembly Kit	TK-IQI-M4
23	Collar, Quick Change	---
24	Retaining Ring	---
25	Spring	---
26	Ball (2 required)	---
27	Front Ring Nut Kit	TK-IQI2L-337-BLACK
*	Front Cover Kit	---
28	For Trigger Start Tool	TK-IQI2LC-727T
29	For Push to Start Tool	TK-IQI2LC-727P
*	Front Nose Sleeve	---
30	For Trigger Start Tool	TK-IQI2LC-739T
31	For Push to Start Tool	TK-IQI2LC-739P

* Indicates not illustrated.

IQI2LT Series, Inline Screwdriver - Exploded View



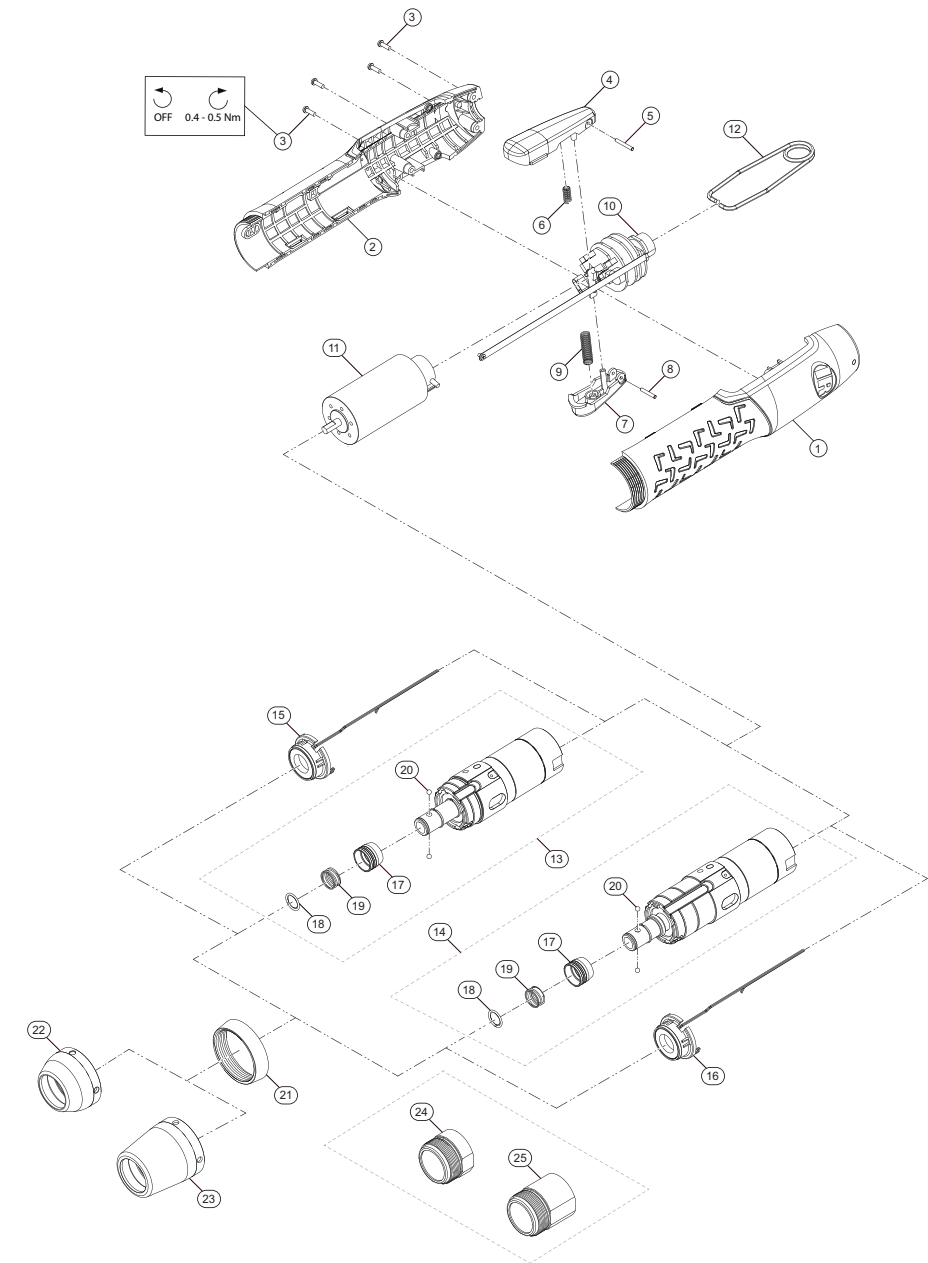
(Dwg. TL-IQI-PLM-2)

IQI2LT Series, Inline Screwdriver - Parts List

Item	Part Description	Part Number
*	Housing Kit	TK-IQI2LT-040
1	Left Housing Assembly	---
2	Right Housing Assembly	---
3	Housing Screw (4 required)	---
*	Forward Trigger Assembly	TK-IQI2LT-093F
4	Forward Trigger Cap	---
5	Forward Trigger Pin	---
6	Forward Trigger Spring	---
*	Reverse Trigger Assembly	TK-IQI2LT-093R
7	Reverse Trigger Cap	---
8	Reverse Trigger Pin	---
9	Reverse Trigger Spring	---
10	PCB Assembly Kit	---
*	For IQI2LT0017TQ4, IQI2LT0017PQ4, IQI2LT0017TM4, and IQI2LT0017PM4	TK-IQI2LT-499-T017
*	For IQI2LT0050TQ4 and IQI2LT0050PQ4	TK-IQI2LT-499-T050
*	For IQI2LT0100TQ4 and IQI2LT0100PQ4	TK-IQI2LT-499-T100
*	For IQI2LT0200TQ4 and IQI2LT0200PQ4	TK-IQI2LT-499-T200
*	For IQI2LT0250TQ4 and IQI2LT0250PQ4	TK-IQI2LT-499-T250
11	Motor Kit	TK-IQI2LT-054
12	Suspension Bail Kit	TK-IQI-365
13	Gearbox Assembly Kit (for Trigger Start tool)	---
*	For IQI2LT0017TQ4	TK-IQI2LT-750-017TQ
*	For IQI2LT0017TM4	TK-IQI2LT-750-017TM
*	For IQI2LT0050TQ4	TK-IQI2LT-750-050T
*	For IQI2LT0100TQ4	TK-IQI2LT-750-100T
*	For IQI2LT0200TQ4	TK-IQI2LT-750-200T
*	For IQI2LT0250TQ4	TK-IQI2LT-750-250T
14	Gearbox Kit (for Push to Start tool)	---
*	For IQI2LT0017TQ4	TK-IQI2LT-750-017PQ
*	For IQI2LT0017TM4	TK-IQI2LT-750-017PM
*	For IQI2LT0050PQ4	TK-IQI2LT-750-050P
*	For IQI2LT0100PQ4	TK-IQI2LT-750-100P
*	For IQI2LT0200PQ4	TK-IQI2LT-750-200P
*	For IQI2LT0250PQ4	TK-IQI2LT-750-250P
15	LED Assembly Kit (for Trigger Start tool)	TK-IQI2LT-ALED-T
16	LED Assembly Kit (for Push to Start tool)	TK-IQI2LT-ALED-P
*	Hex QC Assembly Kit	TK-IQI-Q4
17	Collar, Quick Change	---
18	Retaining Ring	---
19	Spring	---
20	Ball (2 required)	---
*	Half-moon QC Assembly Kit	TK-IQI-M4
21	Collar, Quick Change	---
22	Retaining Ring	---
23	Spring	---
24	Ball (2 required)	---
25	Front Ring Nut Kit	TK-IQI2L-337-RED
*	Front Cover Kit	---
26	For Trigger Start Tool	TK-IQI2LT-727T
27	For Push to Start Tool	TK-IQI2LT-727P
*	Front Nose Sleeve	---
28	For Trigger Start Tool	TK-IQI2LT-739T
29	For Push to Start Tool	TK-IQI2LT-739P

* Indicates not illustrated.

IQI4LC Series, Inline Screwdriver - Exploded View



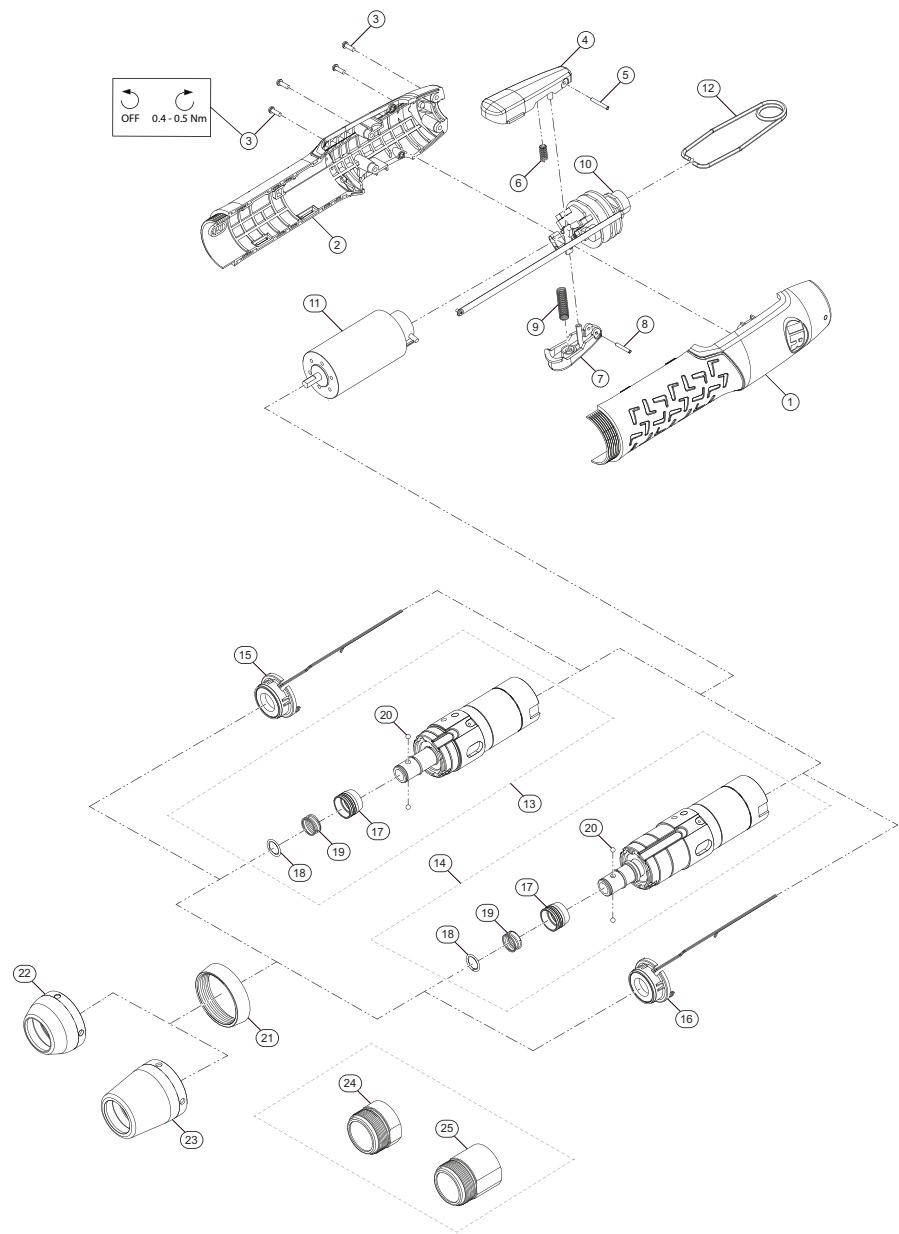
(Dwg. TL-IQI-PLM-3)

IQI4LC Series, Inline Screwdriver - Parts List

Item	Part Description	Part Number
*	Housing Kit	TK-IQI4LC-040
1	Left Housing Assembly	---
2	Right Housing Assembly	---
3	Housing Screw (4 required)	---
*	Forward Trigger Assembly	TK-IQI4LC-093F
4	Forward Trigger Cap	---
5	Forward Trigger Pin	---
6	Forward Trigger Spring	---
*	Reverse Trigger Assembly	TK-IQI4LC-093R
7	Reverse Trigger Cap	---
8	Reverse Trigger Pin	---
9	Reverse Trigger Spring	---
10	PCB Assembly Kit	---
*	For IQI4LC0500TQ4 and IQI4LC0500PQ4	TK-IQI4LC-499-T05
*	For IQI4LC1000TQ4 and IQI4LC1000PQ4	TK-IQI4LC-499-T10
*	For IQI4LC1500TQ4 and IQI4LC1500PQ4	TK-IQI4LC-499-T15
11	Motor Kit	TK-IQI4LC-054
12	Suspension Bail Kit	TK-IQI-365
13	Gearbox Assembly Kit (for Trigger Start tool)	---
*	For IQI4LC0500TQ4	TK-IQI4LC-750-05T
*	For IQI4LC1000TQ4	TK-IQI4LC-750-10T
*	For IQI4LC1500TQ4	TK-IQI4LC-750-15T
14	Gearbox Kit (for Push to Start tool)	---
*	For IQI4LC0500PQ4	TK-IQI4LC-750-05P
*	For IQI4LC1000PQ4	TK-IQI4LC-750-10P
*	For IQI4LC1500PQ4	TK-IQI4LC-750-15P
15	LED Assembly Kit (for Trigger Start tool)	TK-IQI4LC-ALED-T
16	LED Assembly Kit (for Push to Start tool)	TK-IQI4LC-ALED-P
*	Hex QC Assembly Kit	TK-IQI-Q4
17	Collar, Quick Change	---
18	Retaining Ring	---
19	Spring	---
20	Ball (2 required)	---
21	Front Ring Nut Kit	TK-IQI4L-337-BLACK
*	Front Cover Kit	---
22	For Trigger Start Tool	TK-IQI4LC-727T
23	For Push to Start Tool	TK-IQI4LC-727P
*	Front Nose Sleeve	---
24	For Trigger Start Tool	TK-IQI4LC-739T
25	For Push to Start Tool	TK-IQI4LC-739P

* Indicates not illustrated.

IQI4LT Series, Inline Screwdriver - Exploded View



(Dwg. TL-IQI-PLM-4)

IQI4LT Series, Inline Screwdriver - Parts List

Item	Part Description	Part Number
*	Housing Kit	TK-IQI4LT-040
1	Left Housing Assembly	---
2	Right Housing Assembly	---
3	Housing Screw (4 required)	---
*	Forward Trigger Assembly	TK-IQI4LT-093F
4	Forward Trigger Cap	---
5	Forward Trigger Pin	---
6	Forward Trigger Spring	---
*	Reverse Trigger Assembly	TK-IQI4LT-093R
7	Reverse Trigger Cap	---
8	Reverse Trigger Pin	---
9	Reverse Trigger Spring	---
10	PCB Assembly Kit	---
*	For IQI4LT0500TQ4 and IQI4LT0500PQ4	TK-IQI4LT-499-T05
*	For IQI4LT1000TQ4 and IQI4LT1000PQ4	TK-IQI4LT-499-T10
*	For IQI4LT1500TQ4 and IQI4LT1500PQ4	TK-IQI4LT-499-T15
11	Motor Kit	TK-IQI4LT-054
12	Suspension Bail Kit	TK-IQI-365
13	Gearbox Assembly Kit (for Trigger Start tool)	---
*	For IQI4LT0500TQ4	TK-IQI4LT-750-05T
*	For IQI4LT1000TQ4	TK-IQI4LT-750-10T
*	For IQI4LT1500TQ4	TK-IQI4LT-750-15T
14	Gearbox Kit (for Push to Start tool)	---
*	For IQI4LT0500PQ4	TK-IQI4LT-750-05P
*	For IQI4LT1000PQ4	TK-IQI4LT-750-10P
*	For IQI4LT1500PQ4	TK-IQI4LT-750-15P
15	LED Assembly Kit (for Trigger Start tool)	TK-IQI4LT-ALED-T
16	LED Assembly Kit (for Push to Start tool)	TK-IQI4LT-ALED-P
*	Hex QC Assembly Kit	TK-IQI-Q4
17	Collar, Quick Change	---
18	Retaining Ring	---
19	Spring	---
20	Ball (2 required)	---
21	Front Ring Nut Kit	TK-IQI4L-337-RED
*	Front Cover Kit	---
22	For Trigger Start Tool	TK-IQI4LT-727T
23	For Push to Start Tool	TK-IQI4LT-727P
*	Front Nose Sleeve	---
24	For Trigger Start Tool	TK-IQI4LT-739T
25	For Push to Start Tool	TK-IQI4LT-739P

* Indicates not illustrated.

Parts and Maintenance

When tool life has expired, it is recommended that the tool be disassembled, degreased and parts separated by material for proper recycling.

Tool repair and maintenance should only be carried out by an authorized Service Center.

Refer all communications to the nearest **Ingersoll Rand** office or distributor.

Related Documentation

Manuals can be downloaded from ingersollrand.com

For additional information, refer to:

Product Safety Information Manual 16573685

Product Information Manual TL-IQI-PIM

CE-Declaration of Conformity TL-IQI-DOC

UK-Declaration of Conformity TL-IQI-DOC-UK

Electric Tool Controller, Product Information Manual TL-IQI11-FM-PIM

Electric Tool Controller, Parts Information Manual TL-IQI11-FM-PLM

Notes:

Notes:
