

How to connect an IQi controller to a PC

The remote connection to the controller is done through Ethernet.

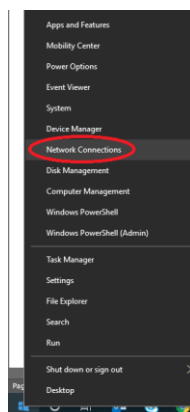
1- Direct connection from controller to PC.

- a. You will need an Ethernet cable connected to the ethernet port at the top.

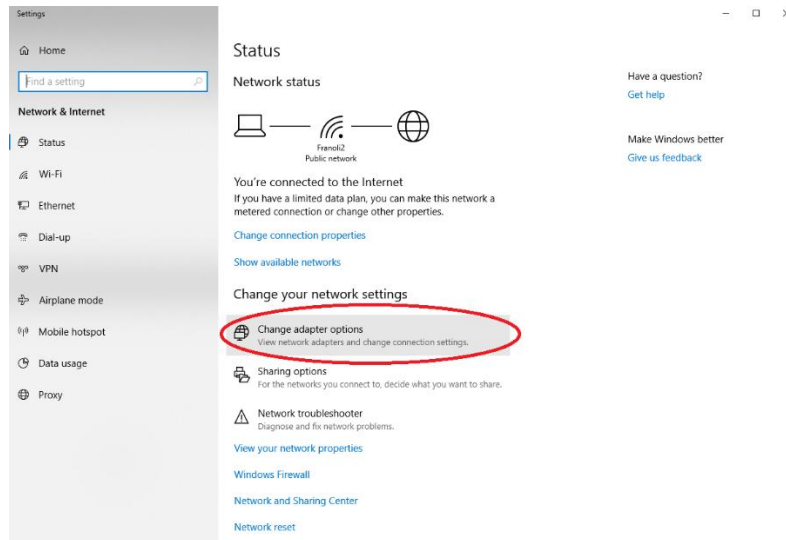


Note: For fieldbus communication, the main port must be used. If a second ethernet port is required, you can use a USB to Ethernet converter (remote browser or MES).

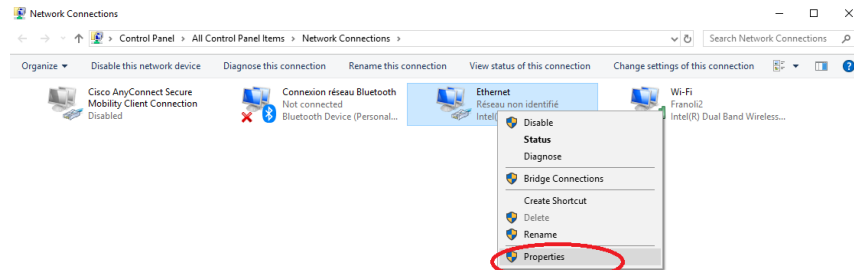
- b. PC Network settings need to be modified to be on the same network as the controller.
 - i. The default IP Address for all the controllers is 192.168.5.5 for Port 1 and the default Subnet Mask is 255.255.255.0. You can confirm this at the bottom of the controller screen.
 - ii. To modify the PC Network settings, use settings similar to below:
 - 1. IP address: 192.168.5.X where X is between 1 and 254, except 5 (this is already used in the controller IP Address).
 - 2. Subnet mask: 255.255.255.0 (same as the controller).
- c. How to change PC Network settings? Below is one example.
 - i. Right click on the Windows icon and select network connections:



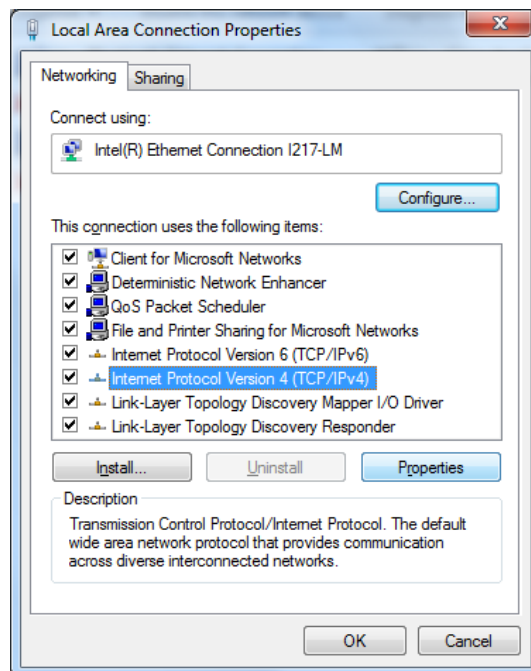
- ii. Click on change adapter options:



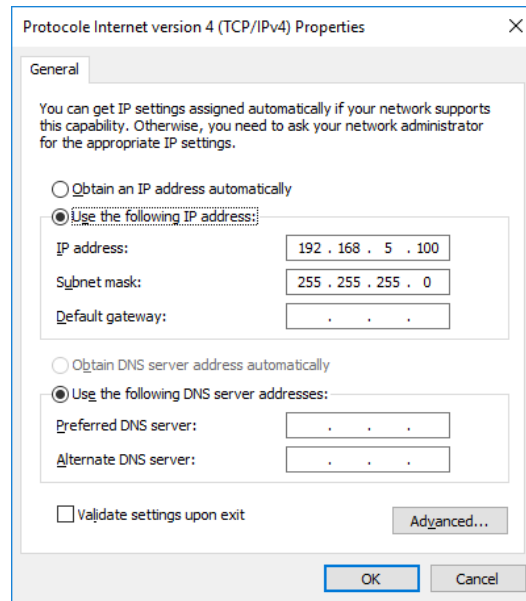
iii. Right click on your Ethernet adapter and go to properties:



iv. Double click on Internet Protocol Version 4:



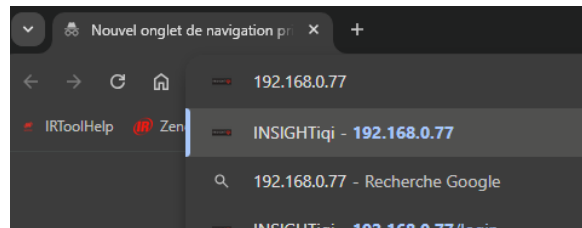
v. For a direct connection, click on Use the following IP Address. Enter the required IP Address and Subnet Mask and select OK:



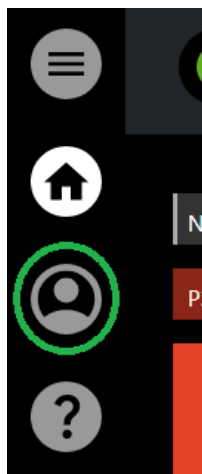
vi. You should now be able to connect to the controller.

2. Logging into the controller.

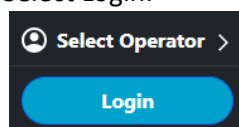
- a. Open an internet browser (Chrome, Edge, Firefox, etc.) and type the controller IP address in the address bar then press enter:



- b. Once the page is loaded, click on the user icon on the left:



- c. Select Login:



- d. You will be prompted to enter your login credentials. Default credentials are admin/ingersoll:

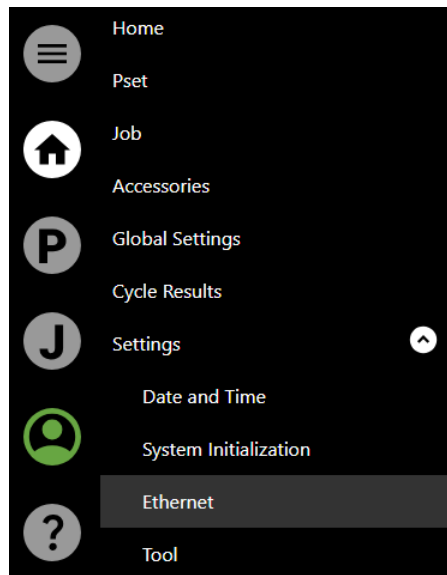


- e. Select your language at the bottom and press Login.
f. Once logged in, the user icon will turn green:



3. If necessary, you can modify the controller Network settings.

- a. Press the menu icon  and go to Settings > Ethernet:



- b. Enter the information given by your network administrator and select the save button when done:

Port 1: Ethernet		⬆
Link Status		●
MAC Address	2C:CF:67:A5:2E:B8	
Speed	1 Gbps	
Network Type	Static	▼
IP Address	192.168.0.77	✎
Subnet Mask	255.255.255.0	✎
Gateway	192.168.0.1	✎
Primary DNS		✎
Secondary DNS		

- c. The controller is now set up to communicate using your desired Network Settings.