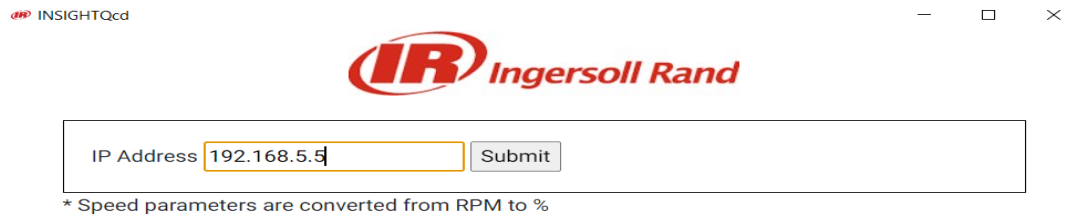


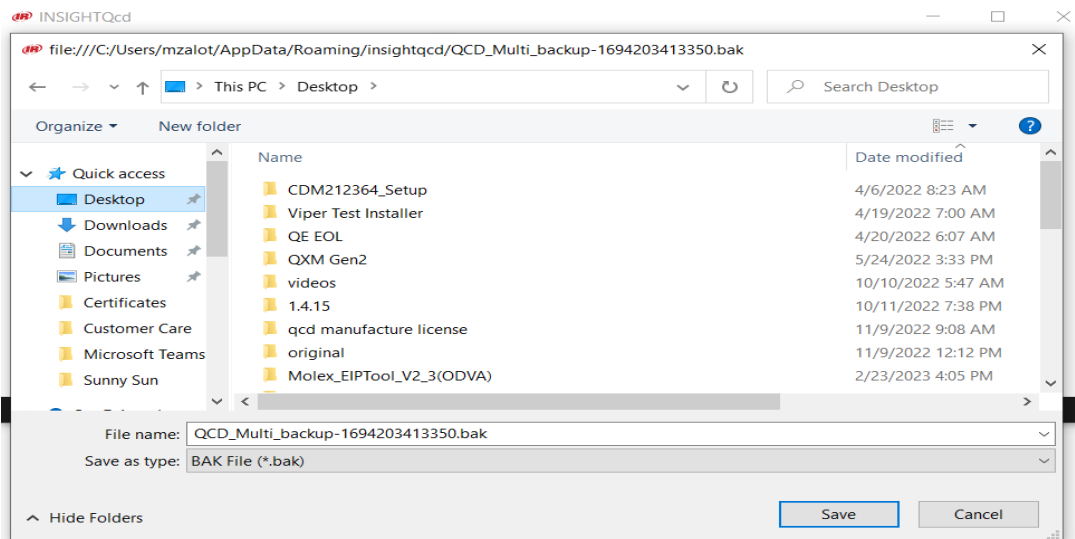
Updating QCD Controllers to the Multi-Spindle Platform

1. Before updating, it is recommended to run the data migration utility.
 - The Data Migration Utility creates a backup of the controller Feature License, Jobs, Psets, and User Settings.
 - See link below for the Data Migration Utility.
 - <https://filesafe.ingersollrand.com/receive/?packageCode=R0xH0I3CZTge7FOI2JUtkroDyi gJLwxfULryOBLVYno#keycode=AFFzeIR6NhhkOTThScIWRyjOe9J-2x9fbcDhTjLCgkk>
 - Copy the executable to a folder on your PC.
 - Run the InsightQcd-2.2.11 Setup.exe file.
 - Enter the controller IP Address and select Submit.

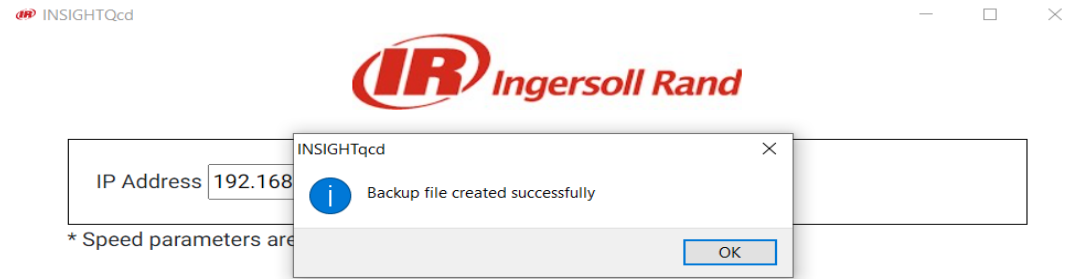


© 2023 INGERSOLL RAND / All Rights Reserved

- Select the location to save the backup file and select Save.



- Backup file is saved successfully.

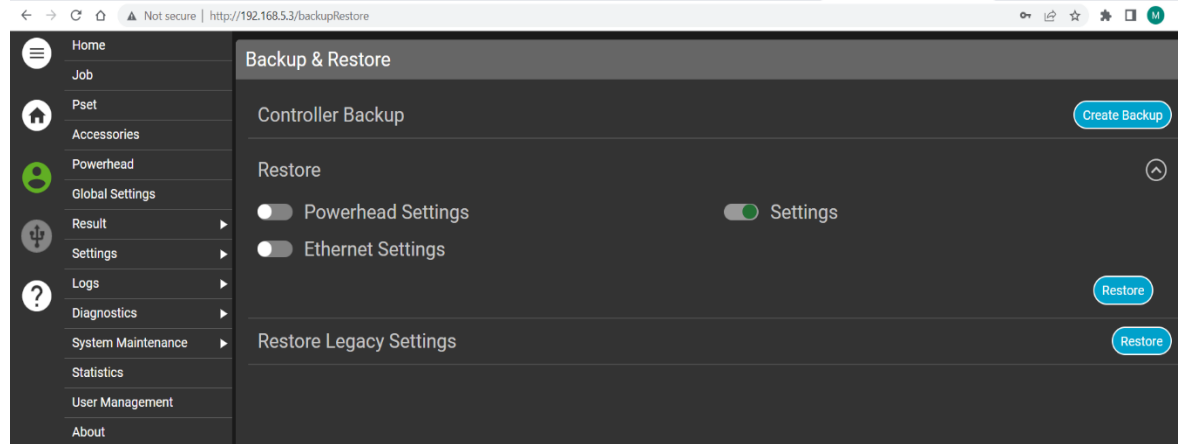


2. Updating Legacy QCD version 6.x.x or 7.x.x to Multi-Spindle 200.x.x.x.

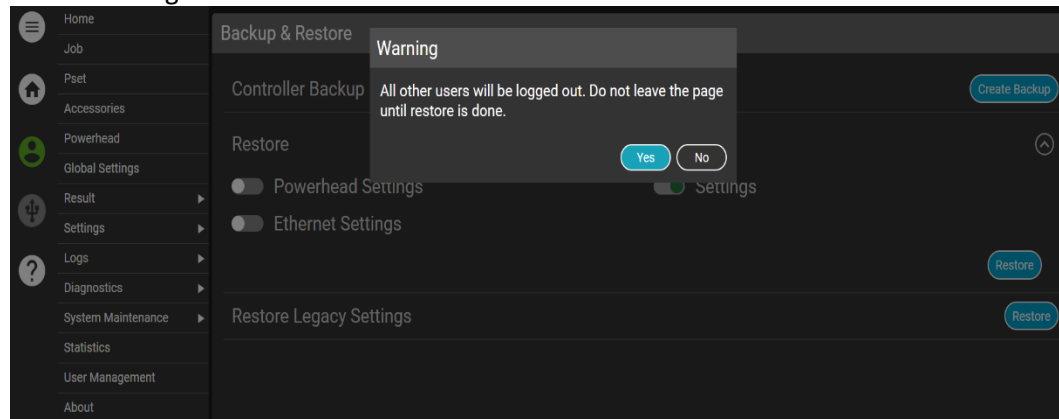
- Copy all files from the Multi-Spindle USBImage folder for version 200.0.0.24 directly onto a formatted Sandisk 2.0 USB drive.
- See link below for files.
 - <https://filesafe.ingersollrand.com/receive/?packageCode=R0xH0I3CZTge7FOI2JUtkroDyiqJLwxfulry0BLVYno#keycode=AFFzeIR6NhkhOTThSciWRyjOe9J-2x9fbcDhTjLCgkk>
- Power off the controller, insert the USB drive into any available USB port on the QCD controller.
- Power on the controller and wait for approximately 10 to 15 minutes for the image to upload. The image update progress is indicated by LED lights.
- Once all LEDs turn green, power off the controller and remove the USB drive.
- After removing the USB drive turn on the controller, the controller's IP address will not be displayed.
- Turn off the controller.
- Turn on the controller and go to the Ethernet Settings screen, configure the IP Address for Ports 1 and 2 on the controller.
- Go to System Maintenance->Firmware Update screen to update the controller to the latest version, 200.0.0.61. Link below:
 - <https://filesafe.ingersollrand.com/receive/?packageCode=R0xH0I3CZTge7FOI2JUtkroDyiqJLwxfulry0BLVYno#keycode=AFFzeIR6NhkhOTThSciWRyjOe9J-2x9fbcDhTjLCgkk>
- Once the application version is updated you should update the MCE.
- Go to System Maintenance -> Firmware Update screen to update the MCE firmware to Version 1.3.12. Link below:
 - <https://filesafe.ingersollrand.com/receive/?packageCode=R0xH0I3CZTge7FOI2JUtkroDyiqJLwxfulry0BLVYno#keycode=AFFzeIR6NhkhOTThSciWRyjOe9J-2x9fbcDhTjLCgkk>
- To access all files, you must register for our FileSafe Repository and request access to Global Releases. Link below.

- <https://irtoolhelp.ingersollrand.com/hc/en-us/sections/12286664085395-Software-Downloads>

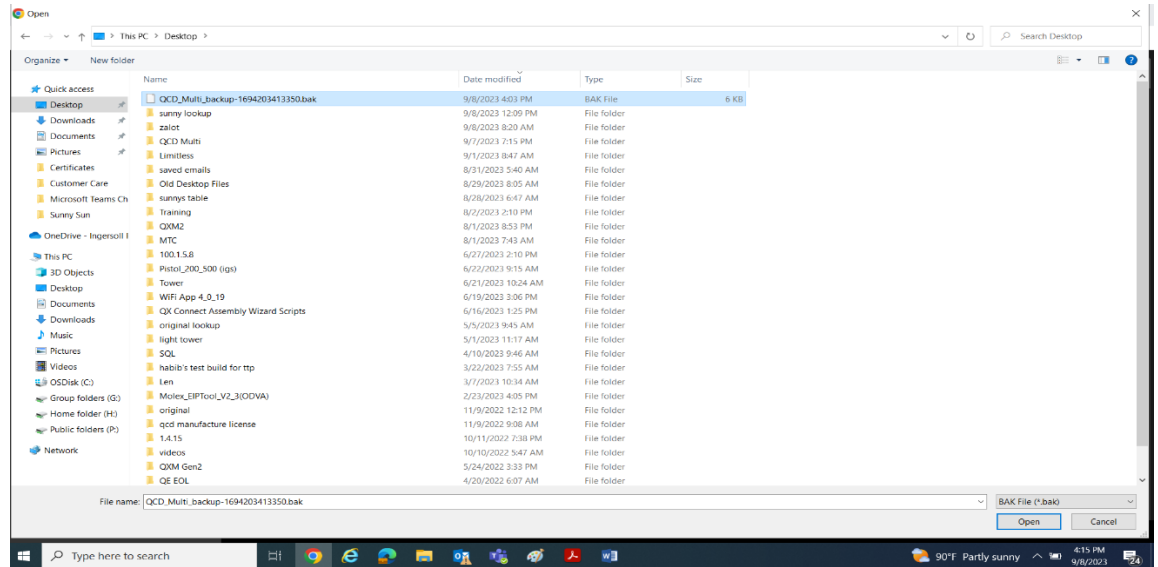
- To Restore the Feature License, Psets, Jobs, and User Settings go to System Maintenance- Backup/Restore.



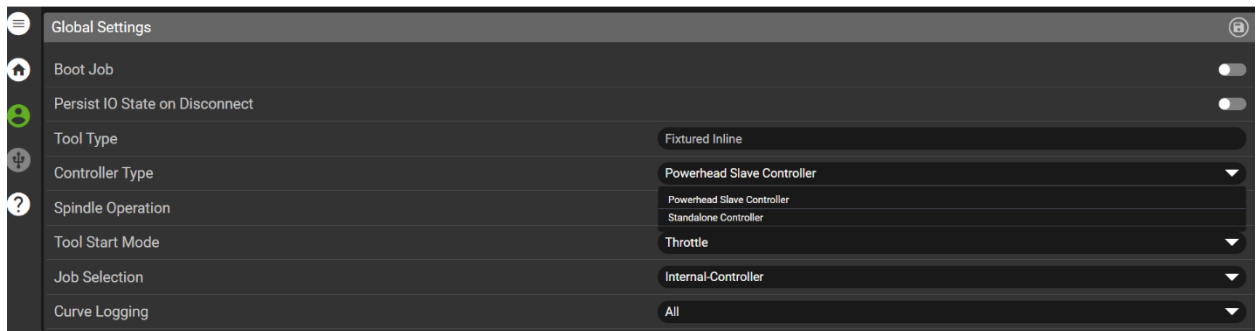
- Select the Restore button for Restore Legacy Settings and you will be prompted with the below message.



- Select Yes and a Browse window will open. Browse to the Backup file and select Open.



- Follow on screen messages to complete the Restore process.
3. From the Global Settings screen for Controller Type select either Standalone Controller or Powerhead Slave Controller.



4. Once the Controller Type is selected, select the Save icon.
5. If using as a Standalone Controller or Slave Controller in a Powerhead the updating process is complete.
6. If using the controller as a Master Controller in a Powerhead you will have to obtain a Master Controller License. This license determines the maximum number of spindles for the Powerhead.
 - See link below for instructions on obtaining a Master Controller License.
<https://irtoolhelp.ingersollrand.com/hc/en-us/articles/20475410106899-Obtaining-a-Master-Controller-License-for-a-Powerhead>