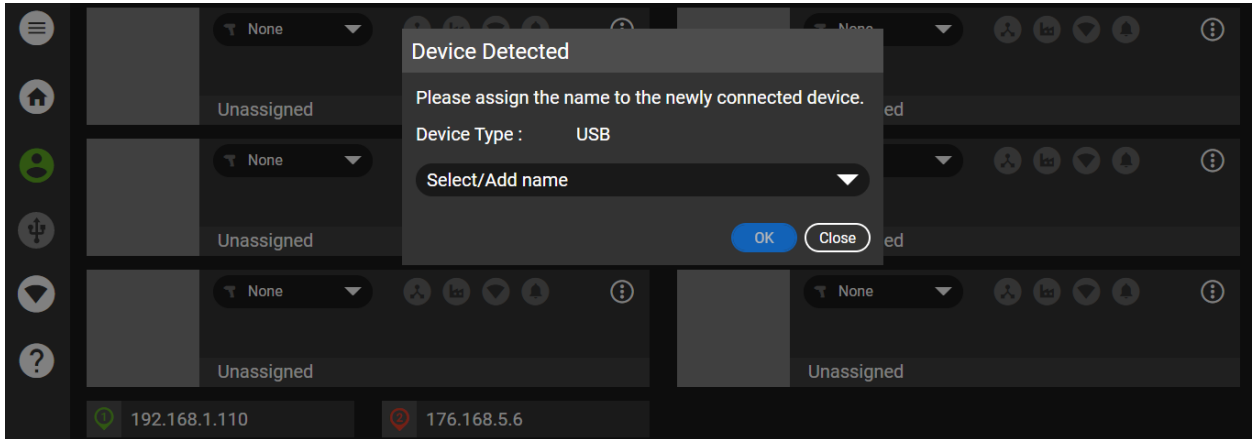
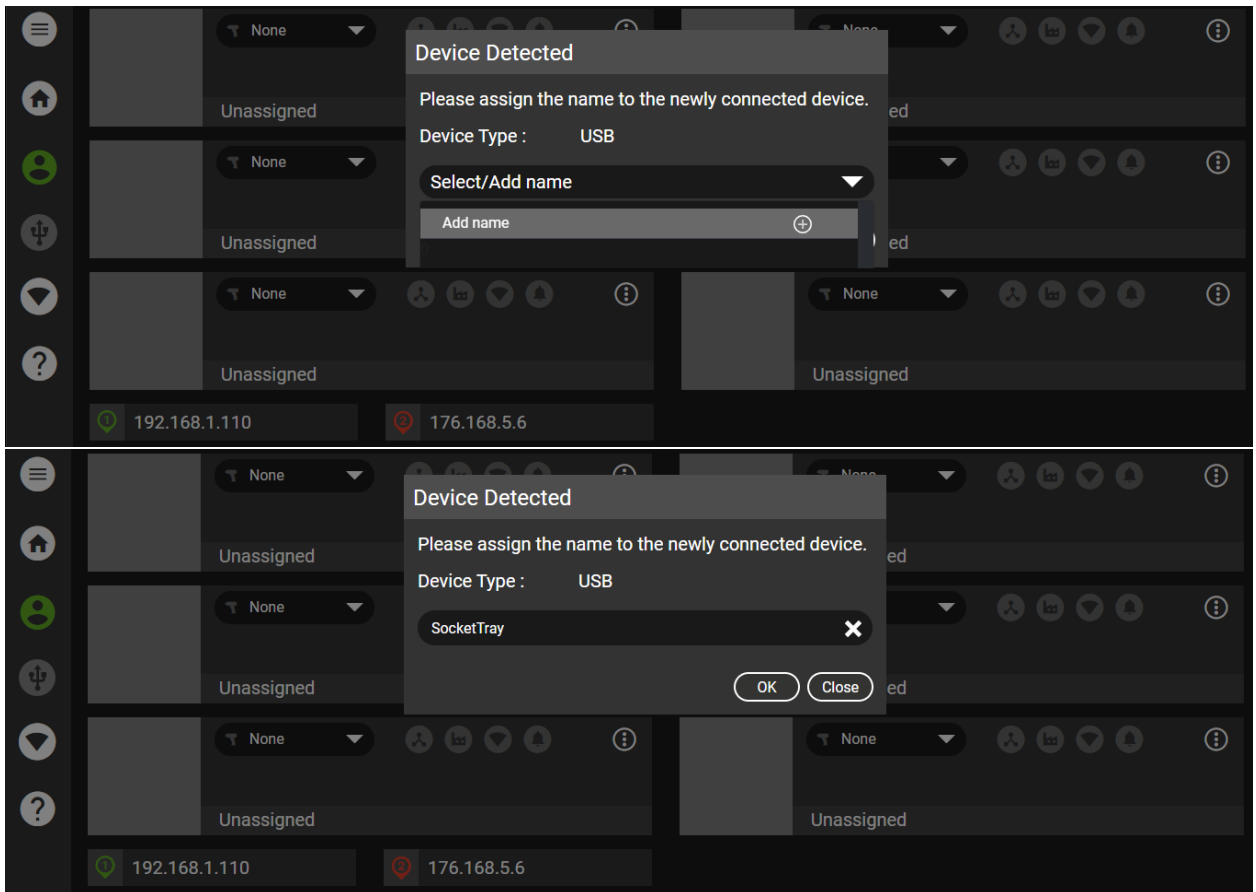
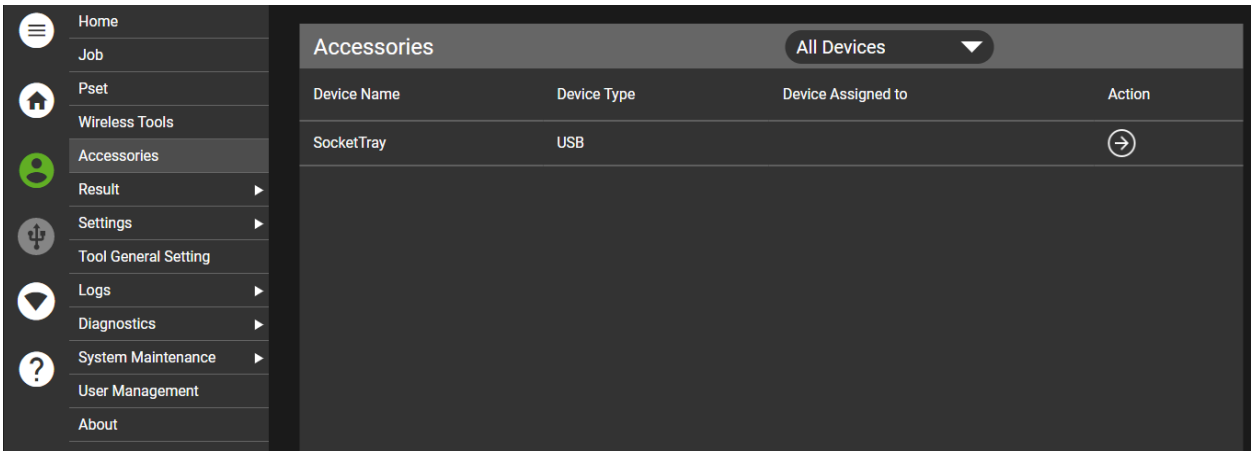


1. Log into the controller.
2. Pair the tools to the controller.
3. Plug the socket tray (QC-SKTR) into the controller. You will see a message that a new device is connected to the controller.

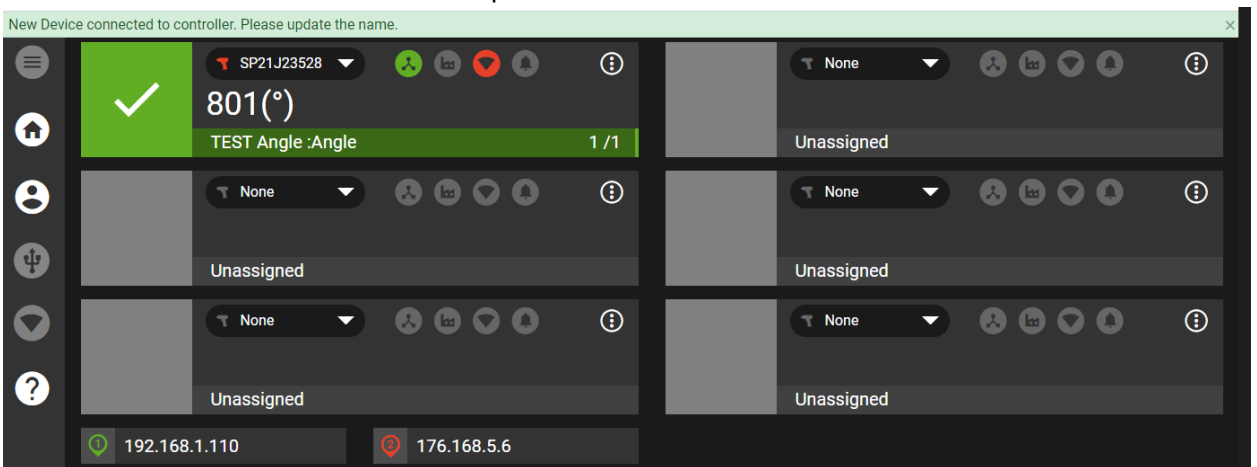


4. Name the Device.



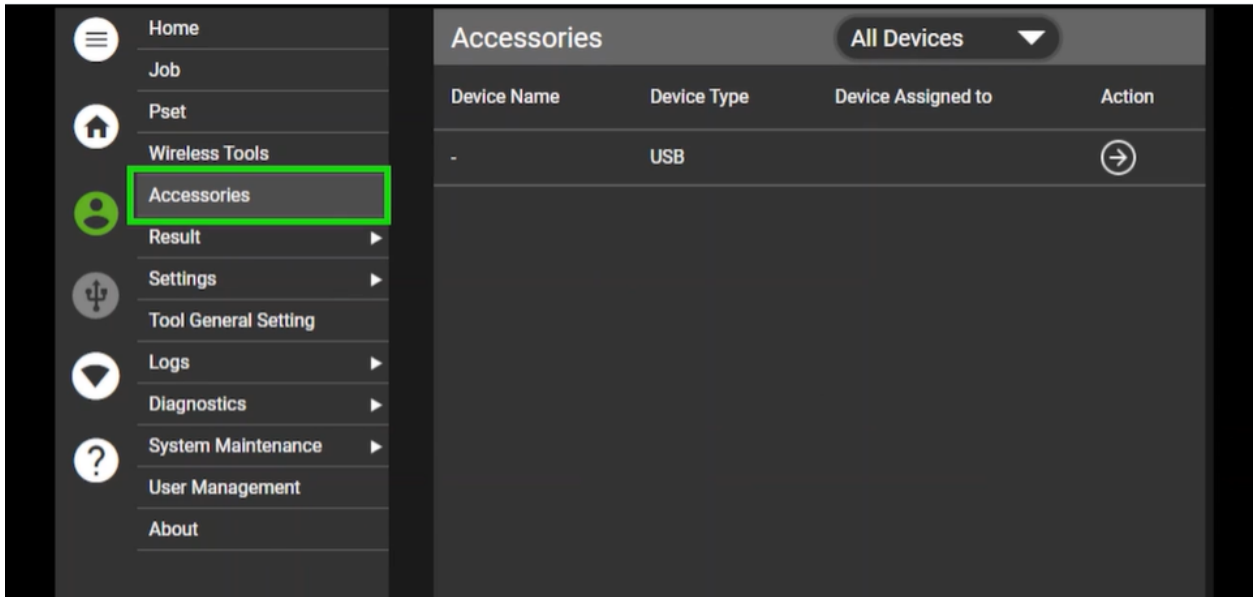


- Note: If you plug the device into the controller before logging in, you will see a banner message that a new device is connected. Please update the name.

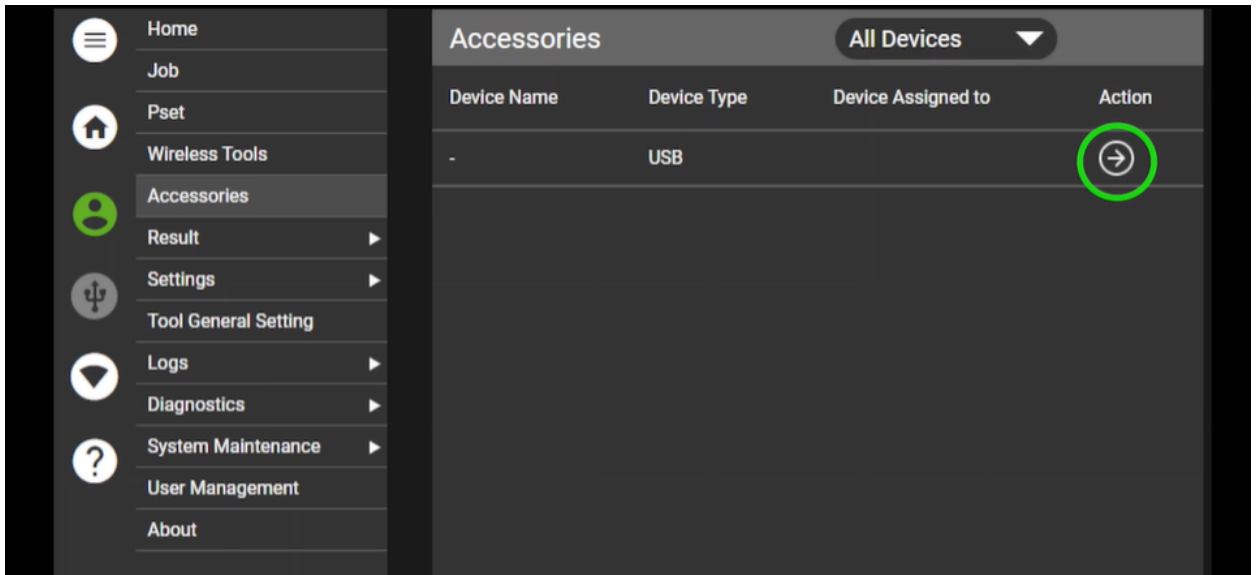


- Log into the controller.

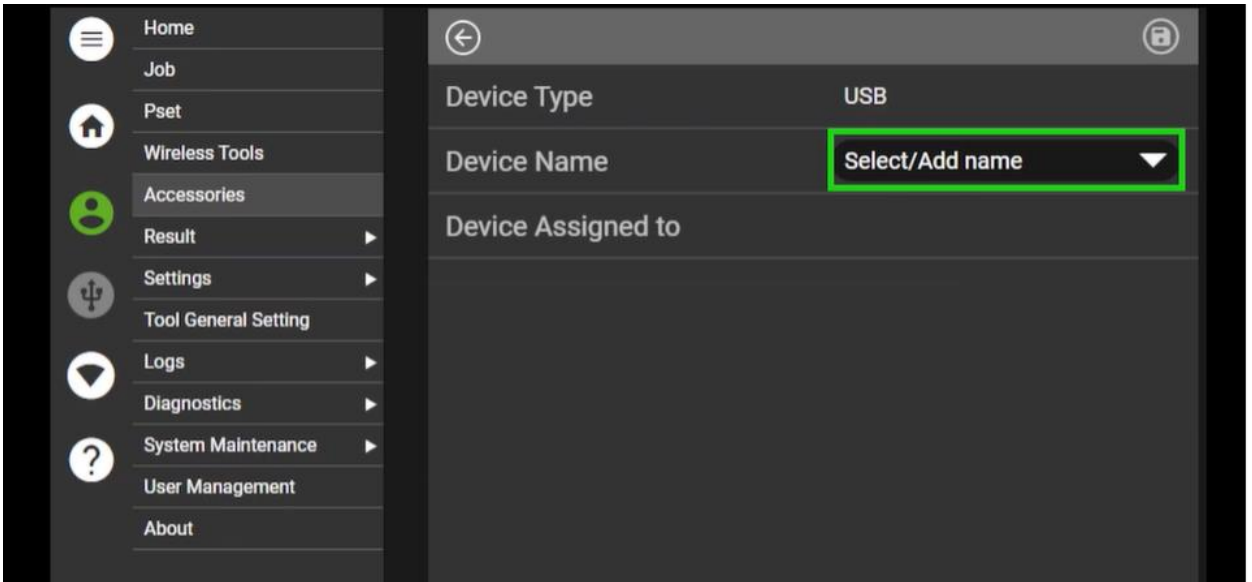
7. Go to Accessories.



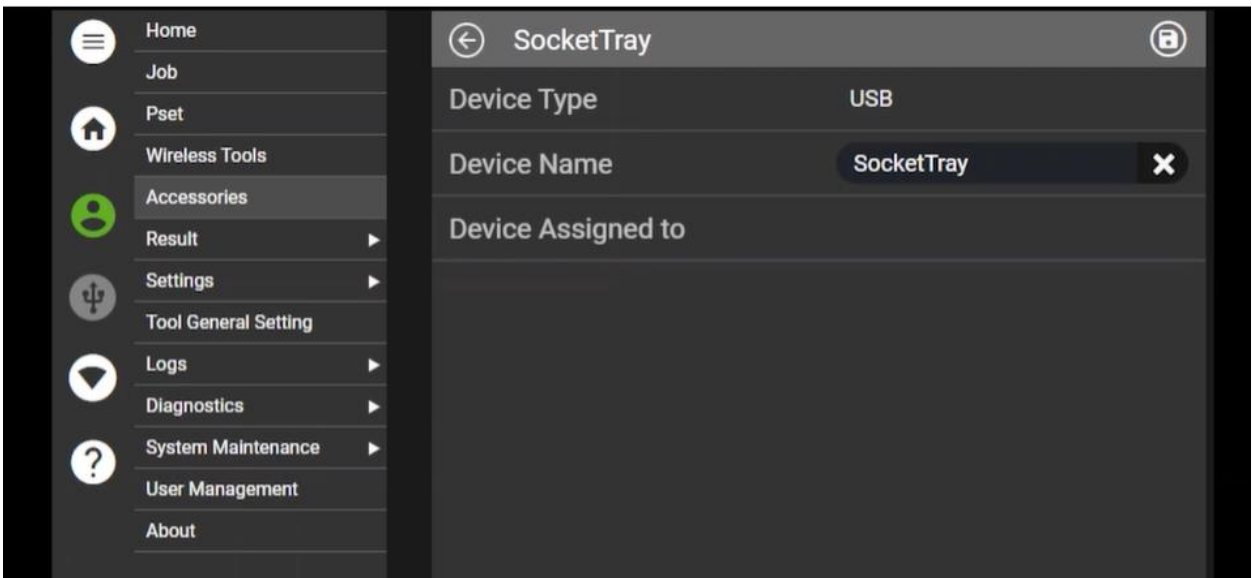
8. Click on the Action arrow to name the Device.



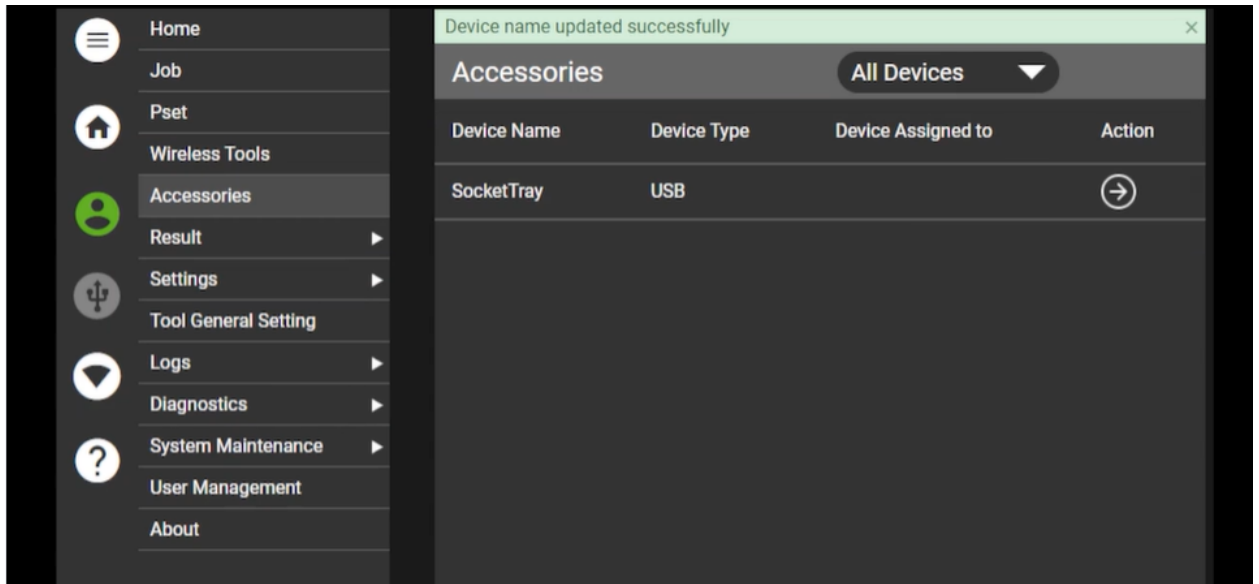
9. Select on the pull down arrow to Add Name.



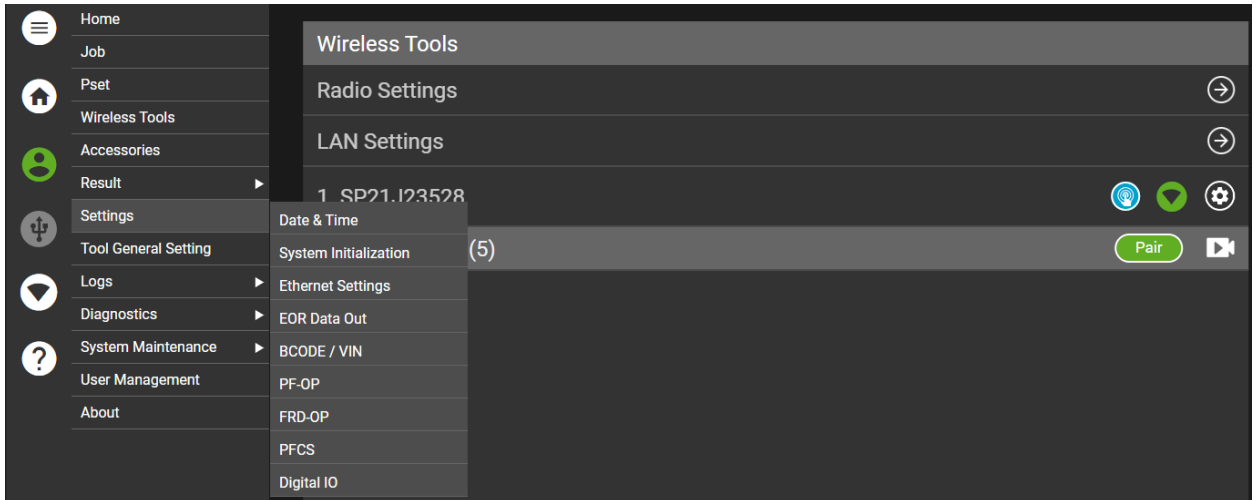
10. Create a name for the Device.



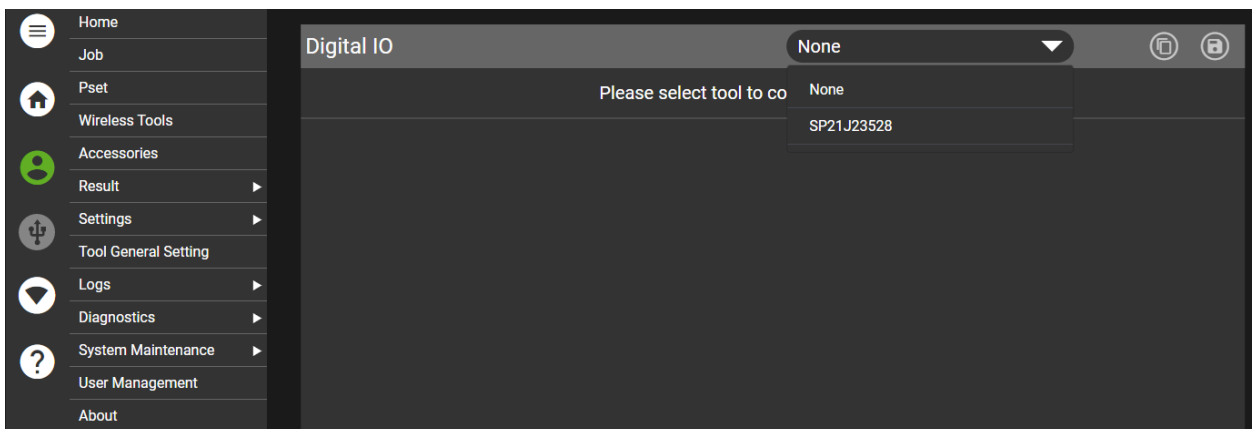
11. Select the Save icon.



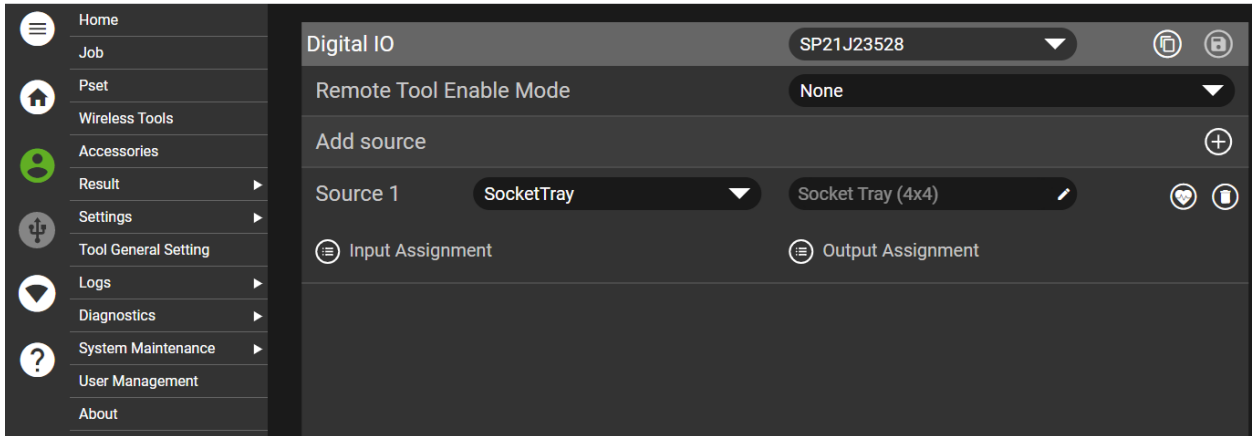
12. Go to Settings->Digital IO.



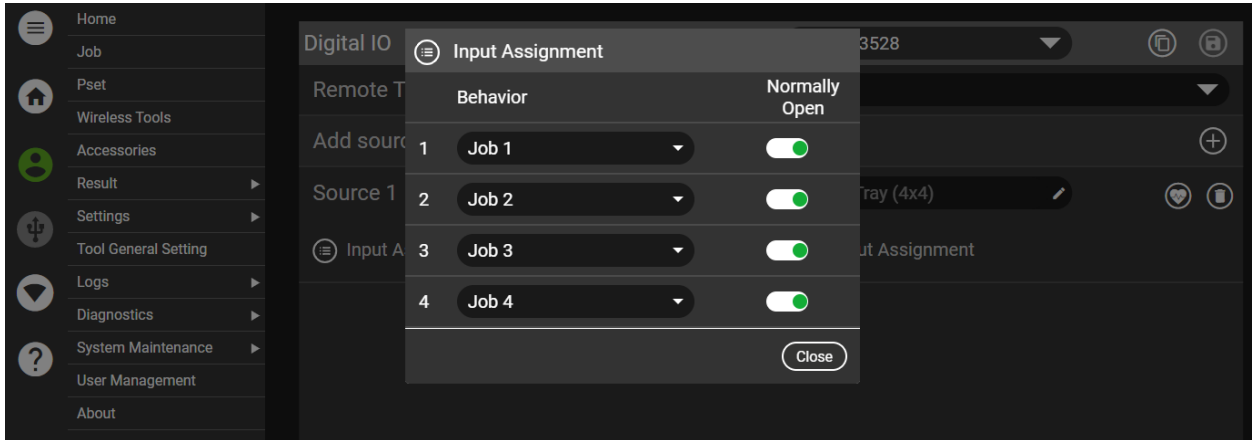
13. Select the tool.



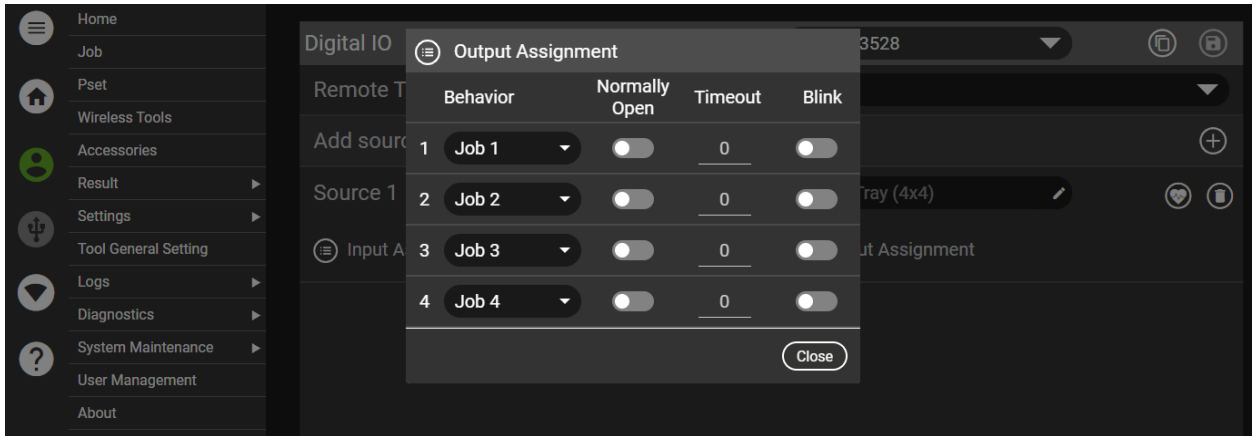
14. Select the Source.



15. Assign the Inputs for Job 1, 2, 3 and 4. Move the toggle switch on to select Normally Open.

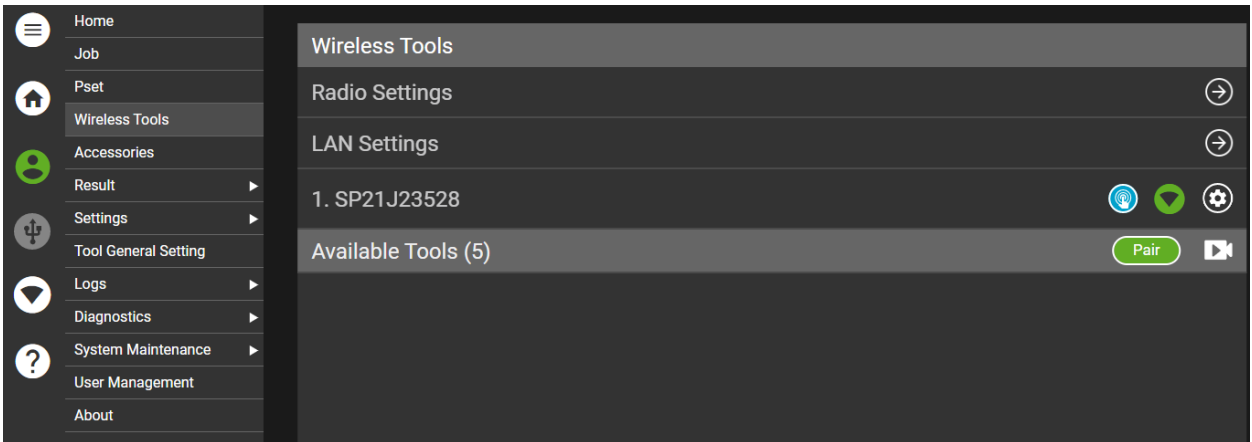


16. Assign the Outputs for Job 1, 2, 3, 4. Leave the toggle off to select Normally Closed.

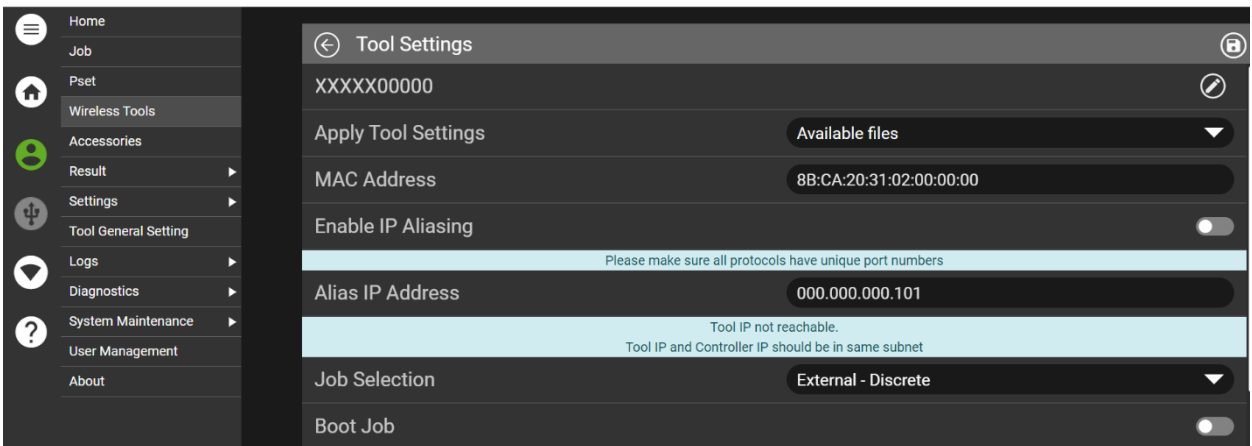


17. Save the changes.

18. Go to Wireless Tools.



19. Select the Settings icon (gear) for the desired tool and change the Job Selection Mode External Discrete.



20. Save the changes.

21. Go to the Home Screen.

22. To run the tool, pull one socket out of the Socket Tray. The tool will run the selected Job.