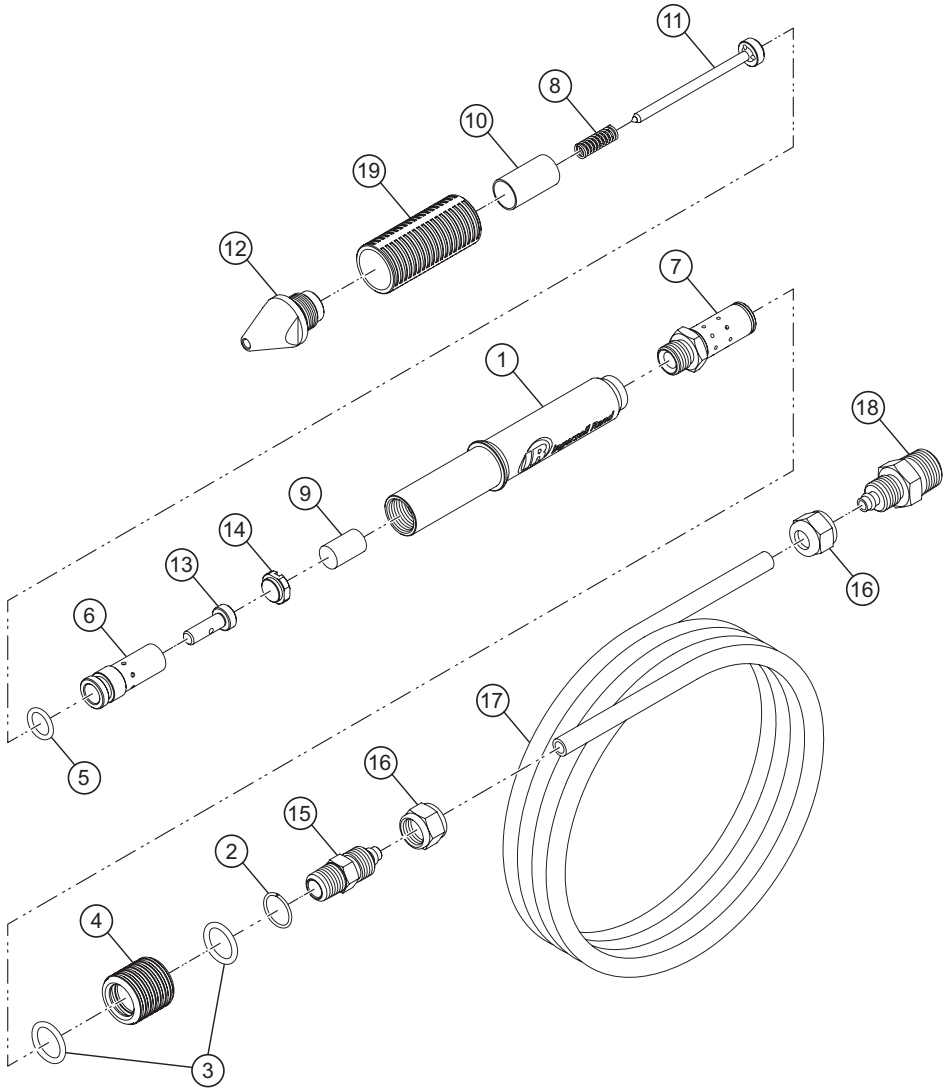


140EP, Air Engraving Pen - Exploded View



(Dwg. TL-140-PLM-1)

140EP, Air Engraving Pen - Parts List

Item	Part Description	QTY.	Part Number (CCN)
1	Housing	1	140-501
2	Retaining Ring	1	140-18
3	O-Ring (10.8 X 1.8)	2	140-65
4	Valve Sleeve	1	140-510
5	O-Ring (7 X 1.5)	1	140-512
6	Cylinder	1	140-508
7	Valve Stem	1	140-229
8	Spring	1	140-505
9	Air Filter	1	140-311
10	Distance Tube	1	140-506
11	Stylus	1	140-516
12	Nose	1	140-502
13	Piston	1	140-507
14	End Cap	1	140-509
15	Tube Fitting	1	140-809
16	Nut	2	140-27
17	PU Hose	1	140-130
18	Tube Fitting	1	140-503
19	Grip	1	140-747

Parts and Maintenance

When tool life has expired, it is recommended that the tool be disassembled, degreased and parts separated by material for proper recycling. Tool repair and maintenance should only be carried out by an authorized Service Center.

Refer all communications to the nearest **Ingersoll Rand** office or distributor.

Related Documentation

Manuals can be downloaded from ingersollrand.com

For additional information, refer to:

Product Safety Information Manual 16576704

Product Information Manual TL-140-PIM

Declaration of Conformity TL-140-DOC