



# SQL Server Installation Guide & FAQ

## Contents

SQL Express 2014 Installer .....	2
SQL EXPRESS installation steps: .....	5
Configuring SQL Server .....	16
Downloading Server Management Studio .....	17
Server Management Studio installation steps:.....	19
.NET Framework Installation.....	24

## SQL Express 2014 Installer

### NOTICE

**SQL Server is a Microsoft product. All parties downloading it to their PCs should follow their organization process and policy. Your IT department should be involved in case of firewall or other issues. Download time may vary depending on your PC and network connection.**

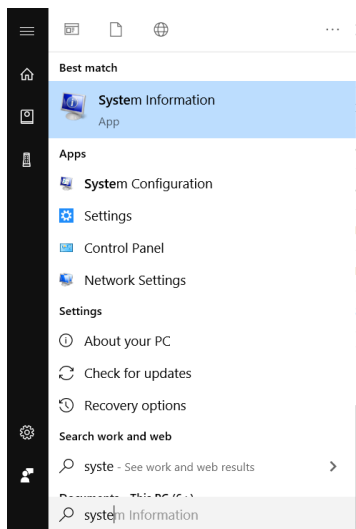
Installation file for SQL Express 2014 (English version) is distributed with the USB Package which contains installer for both 32bit and 64bit Operating Systems.

- For 32bit – **SQLEXP\_x86\_ENU.exe**
- For 64bit – **SQLEXP\_x64\_ENU.exe**

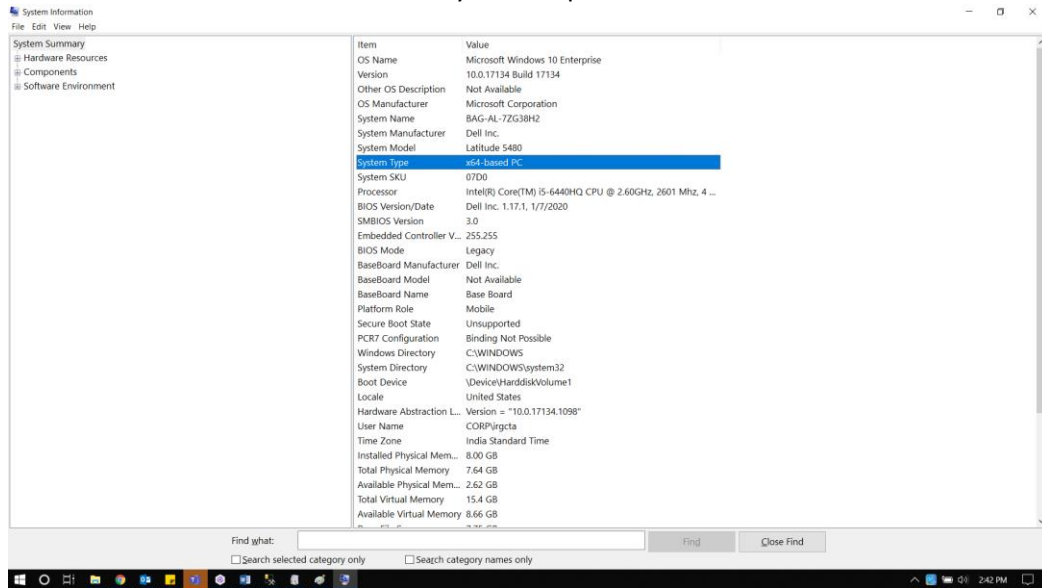
If you need to install SQL Server for other languages, use Microsoft's website to download.

**Note:** Operating system information can be found using the following steps.

- From start Menu, type 'System Information'. Click on System Information application to open.



This screen shows information about your computer and information on 32 or 64 bit OS

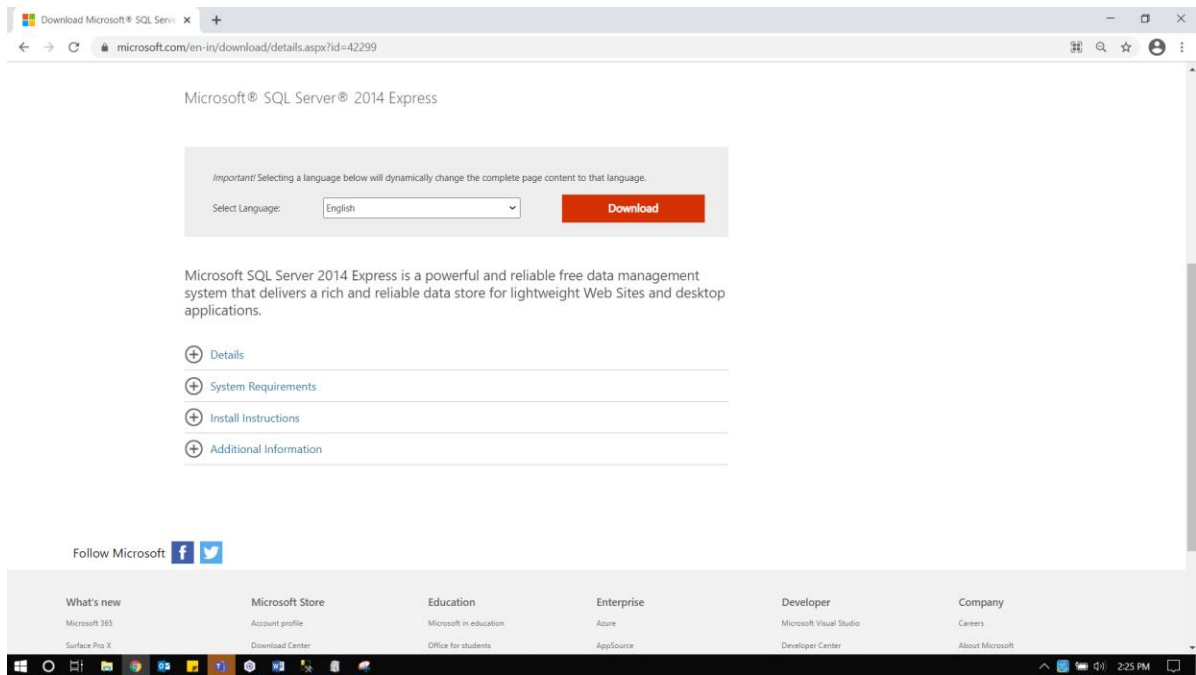


Refer to the section below for downloading .exe procedure if required.

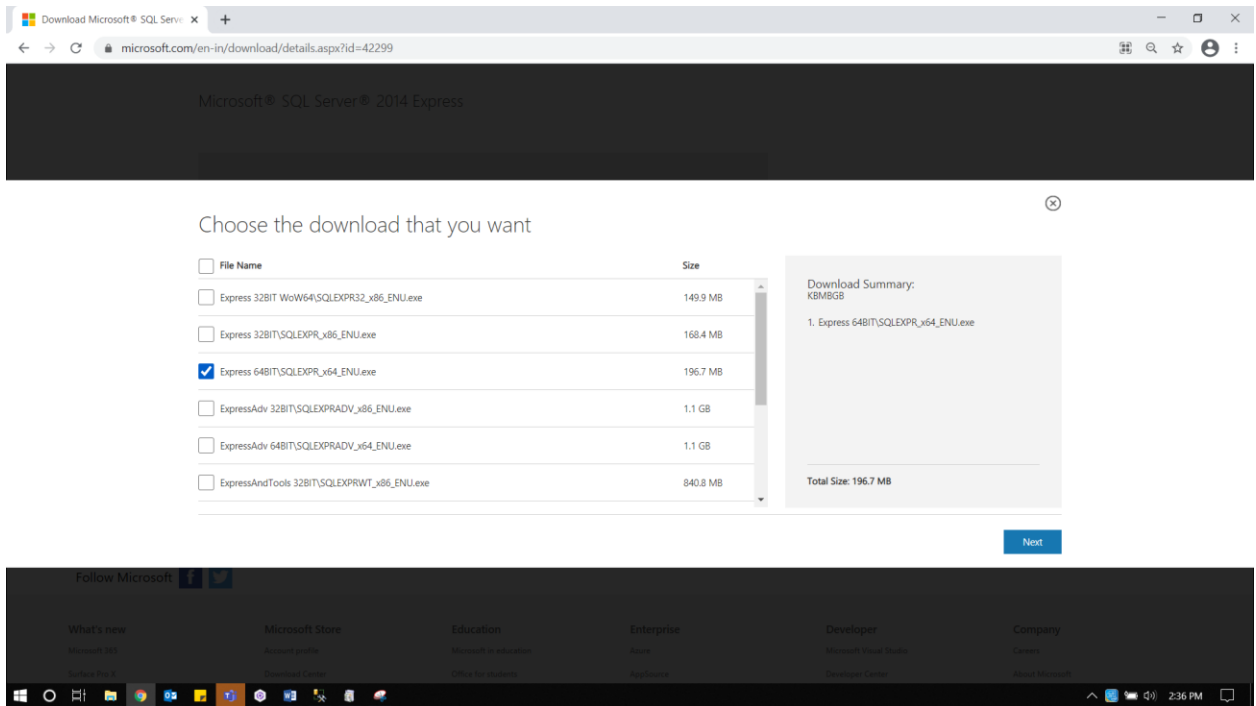
1. Open the link mentioned below in your browser

<https://www.microsoft.com/en-in/download/details.aspx?id=42299>

**Note:** This link may change time to time. Please check in internet if unable to see the webpage as shown below



2. Click on download button in step 1 which will bring up the screen below

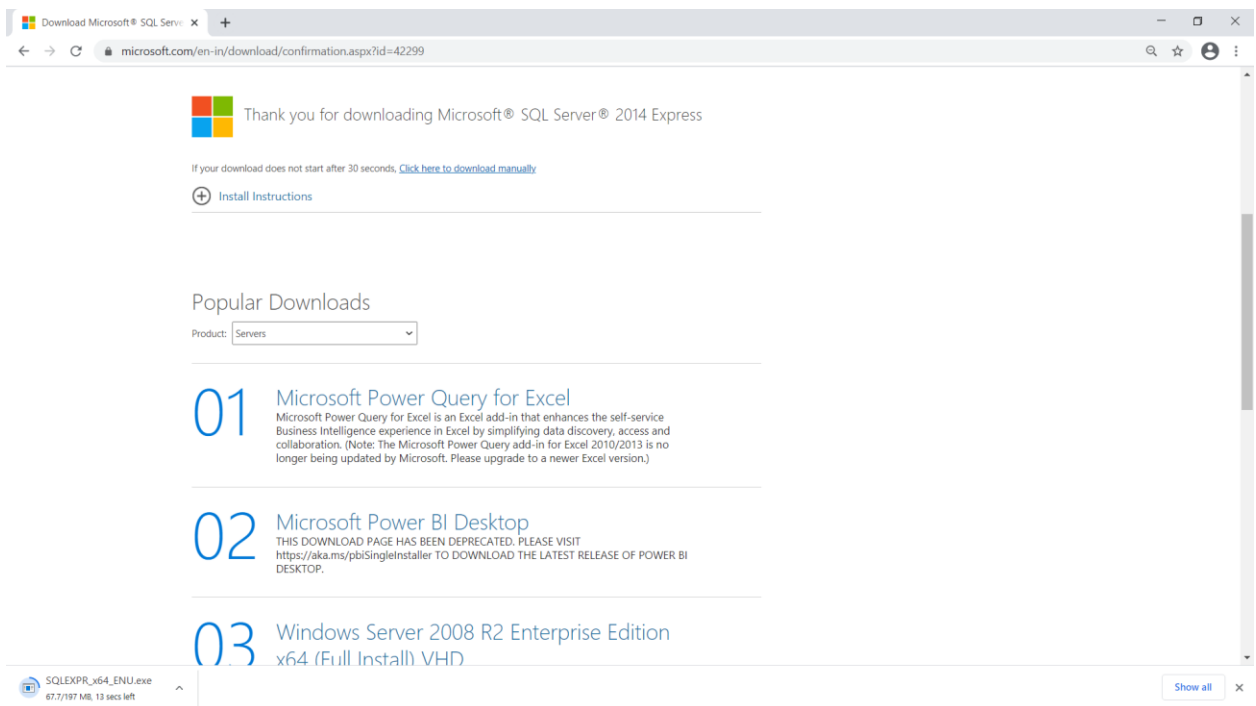


Select the appropriate .exe

**Express 32BIT\SQLEXPR\_x86\_ENU.exe** - This contains 32bit binaries only. If installing on a 32bit operating system, use this package.

**Express 64BIT\SQLEXPR\_x64\_ENU.exe** - x64 package for native x64 SQL Server Express on a 64bit operating system.

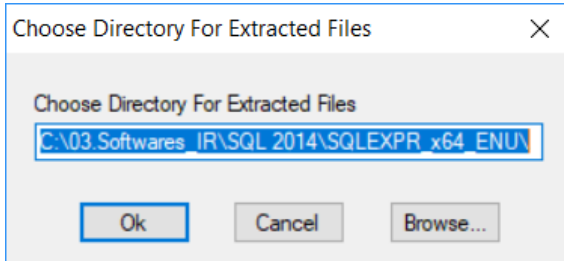
3. Click on 'Next' button of step2 which will bring up the screen as below



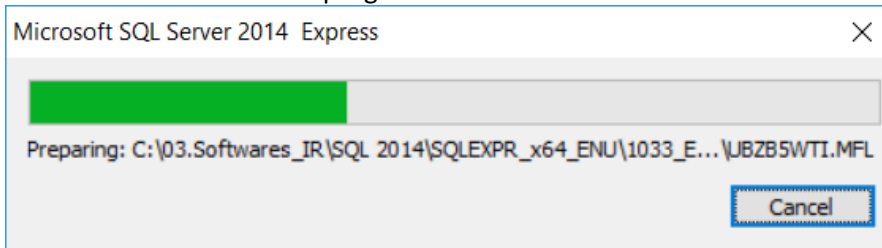
4. This prompts for save option which will allow user to save the installer in specified path or file gets directly downloaded in browser's default 'downloads' folder.

## SQL EXPRESS installation steps:

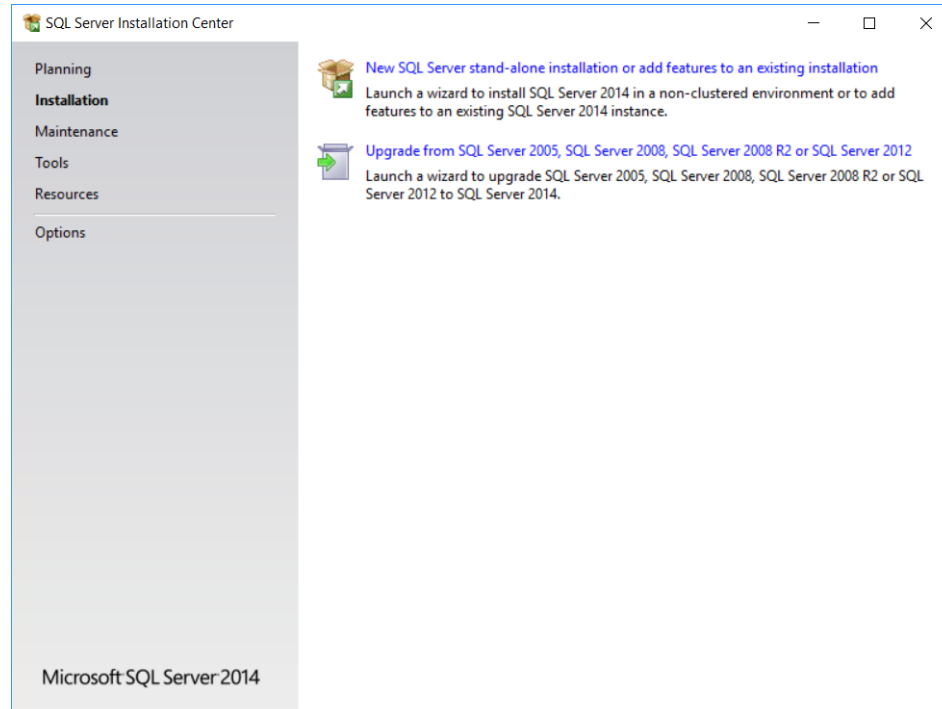
1. Double click on the EXE file (or right click and Run), which is downloaded using the steps mentioned above. It will show the screen to extract files. Keep the default directory path as it. Click on OK to extract.



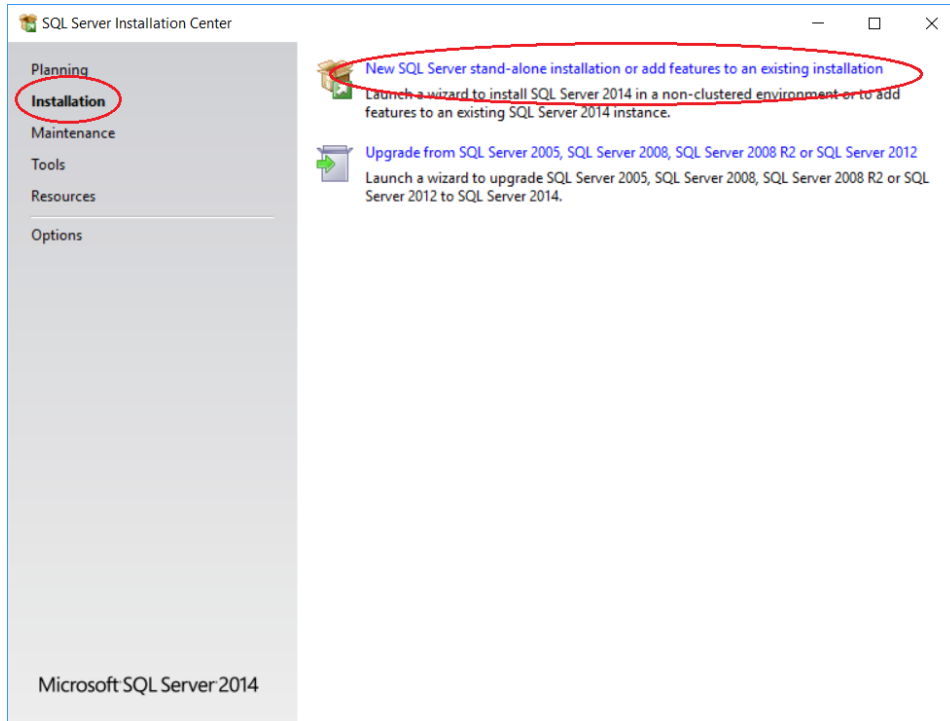
2. This will show extract files progress screen and will take few seconds.



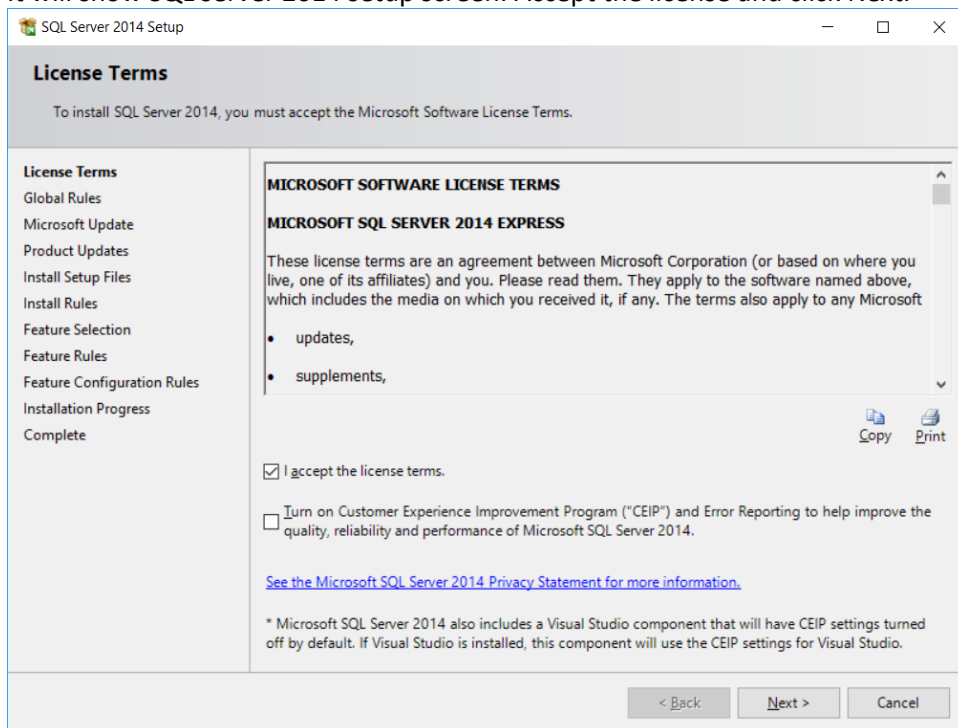
3. After completion of extracting files, 'SQL Server Installation Center' window appears as shown below.



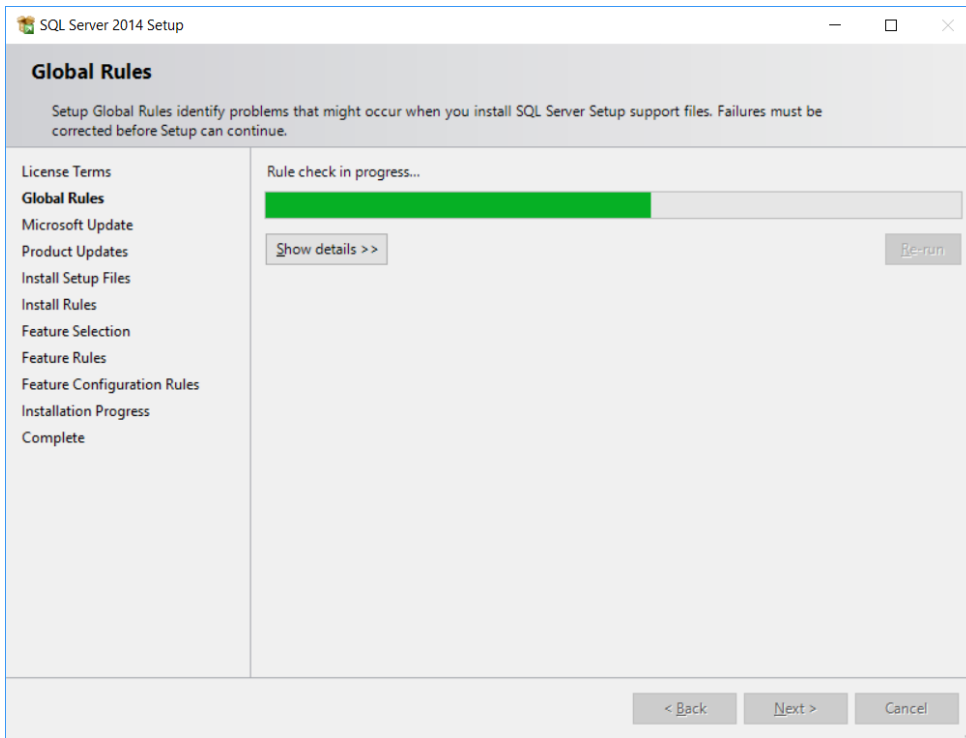
4. Make sure to select **“Installation”** option from the left side pane and Click on **“New SQL Server stand-alone installation or add features to an existing installation”**.



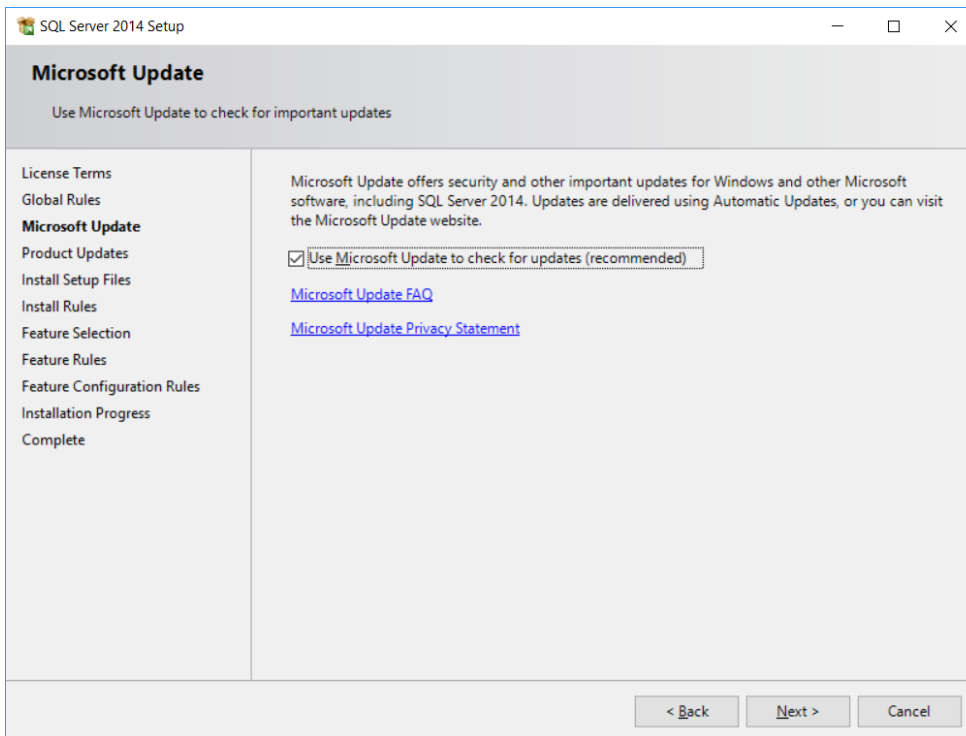
5. It will show SQL server 2014 setup screen. Accept the license and click Next.



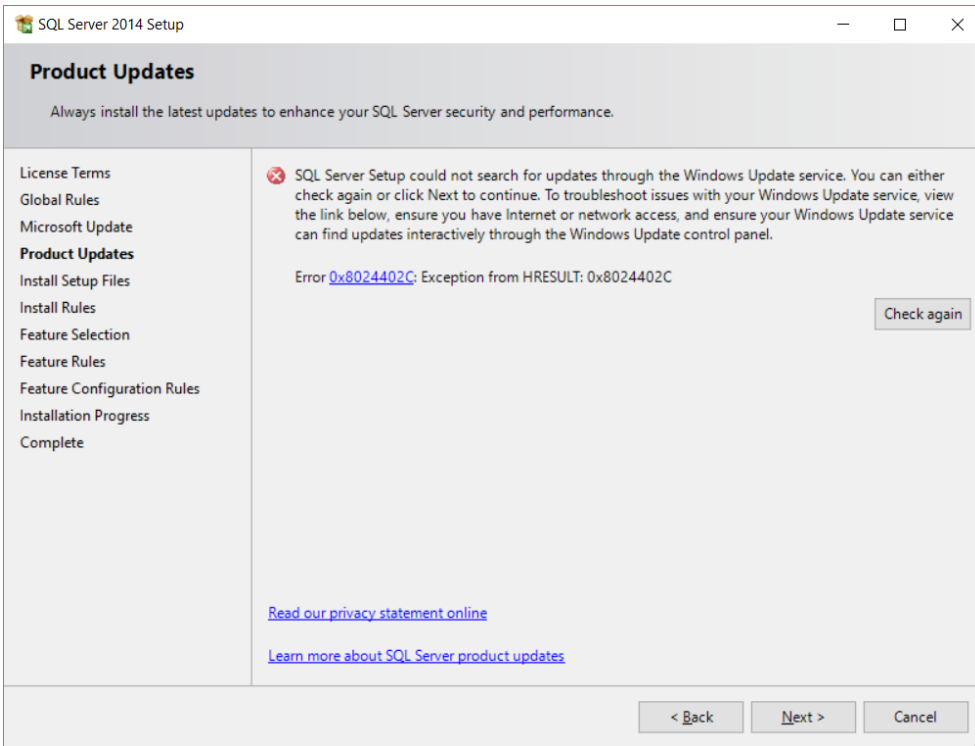
6. This will run Rule check. Make sure there are no failures and then click Next button. If there are any issues, try re-running rule check after resolving the issue. If the issues are still persisting, contact your IT administrator for troubleshooting



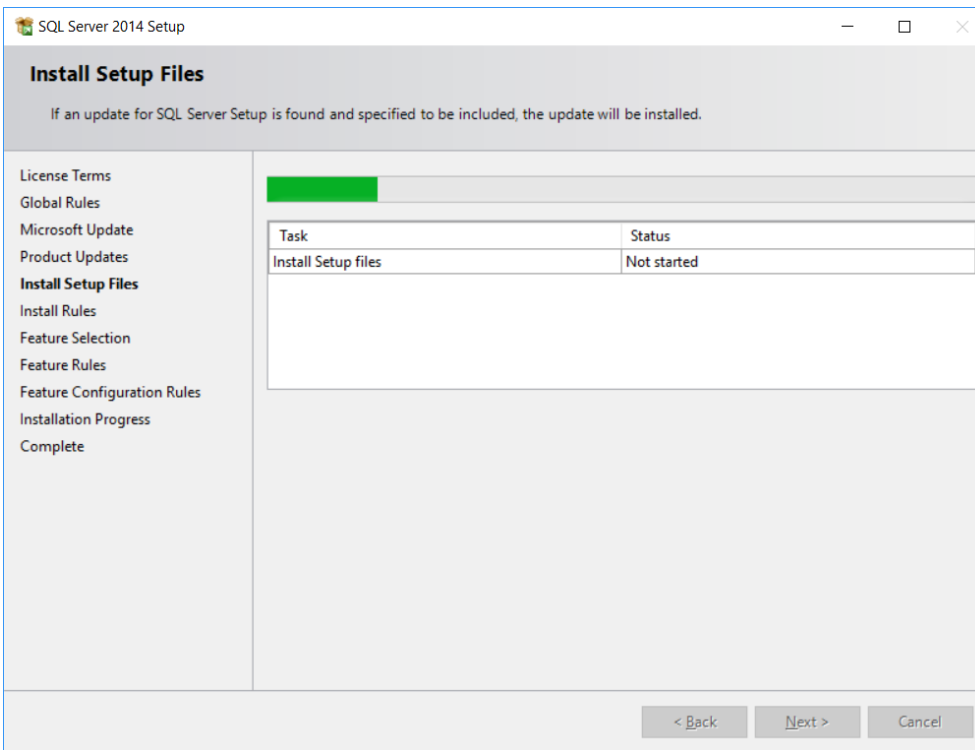
7. Microsoft update screen shows. Enable the check box to for Microsoft updates if required. Click on Next button.



8. Microsoft product update screen comes up. Click on Next to continue. Discard any error message shown on this screen.



9. Setup searches for the SQL server update.



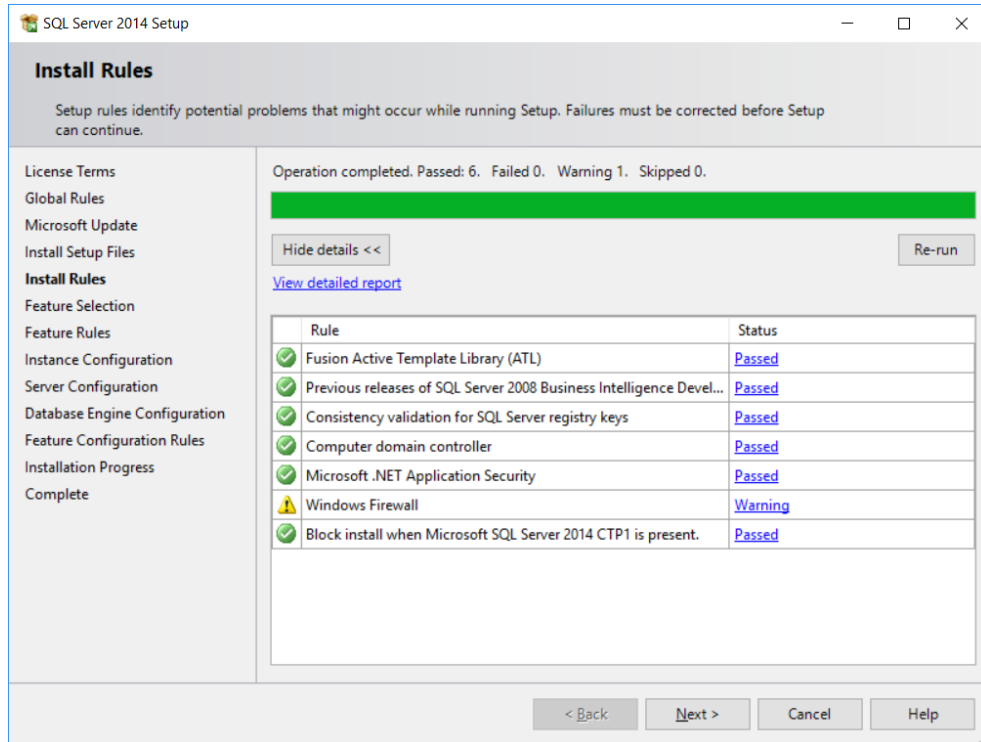
10. Setup will run another rule check. You'll probably end up with a Windows Firewall warning this time. If user is accessing the SQL server express in the same machine ignore this warning. If user wants to enable remote access to SQL Server expression configure the firewall later. [TBD] Below is the detail steps for configuring the firewall setting on windows 10 PC.

- Click the Windows Start button and select Control Panel.

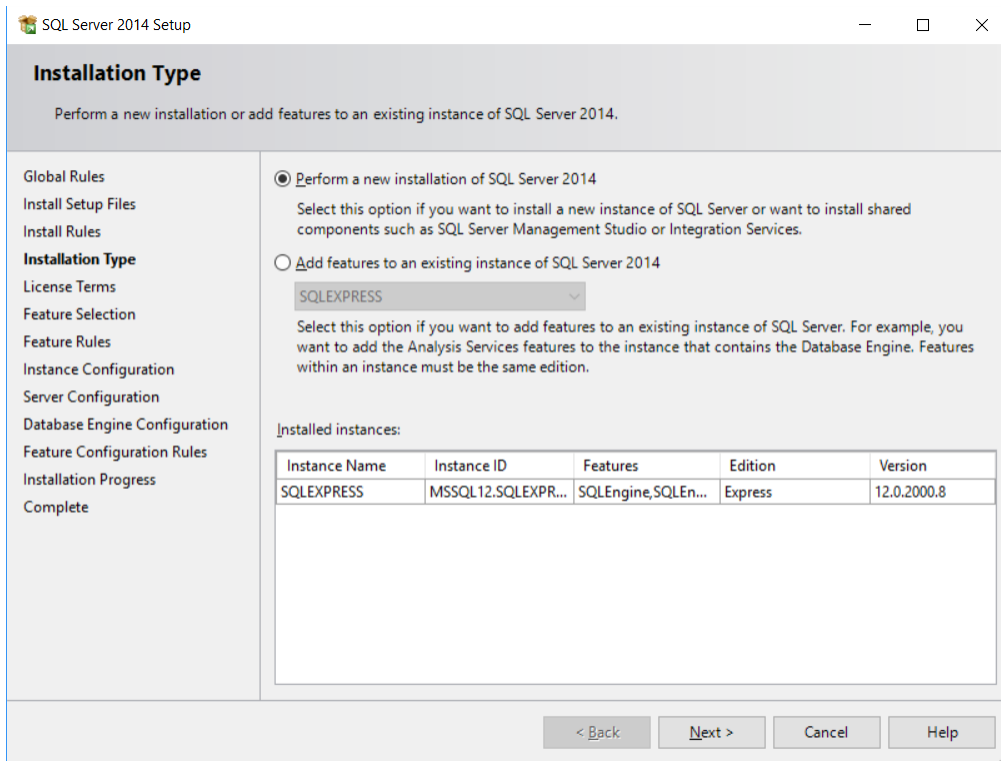


- In control paner, select Windows Defender Firewall.
- Click Advanced Settings.
- Click Inbound Rules, then New Rule.
- Select Program from the Rule Type window, then click Next.
- Click Browse, and navigate to the instance of SQL Server that you want to access through the firewall, and then click Open. By default, SQL Server is at C:\Program Files\Microsoft SQL Server\MSSQL12.SQLEXPRESS\MSSQL\Binn\sqlservr.exe
- Click Next to 'Allow the connection' click next again. Add name of the connection and click finish.

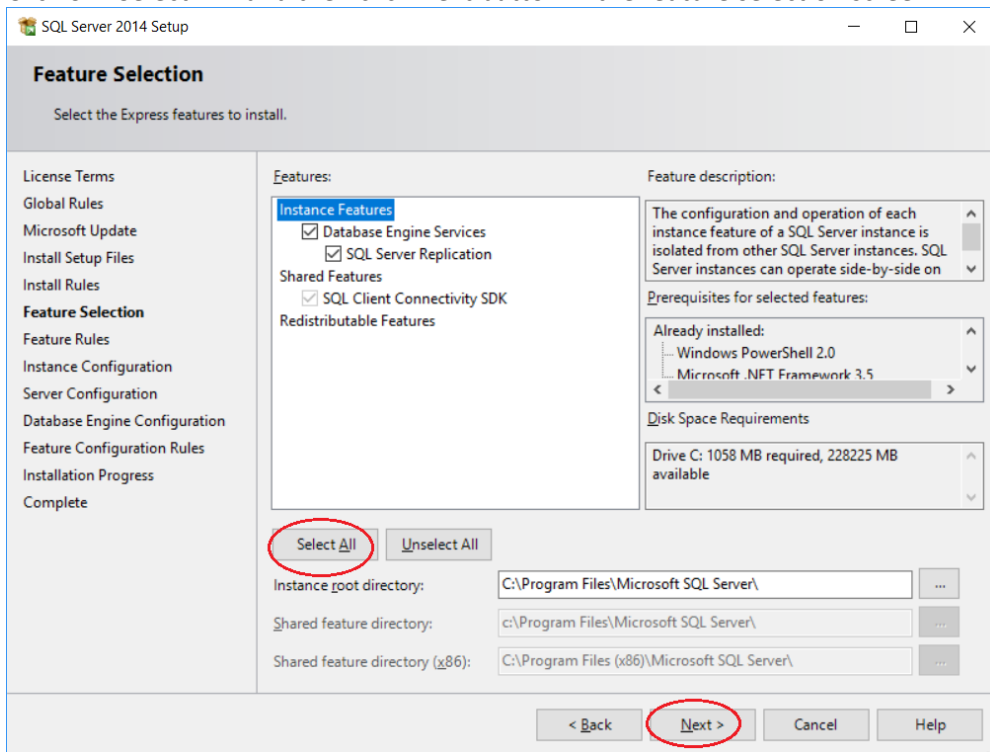
Click **NEXT** to continue with installation



11. Select **“Perfrom a new installation of SQL Server 2014”** and do NOT select **“Add features to an existing instance of SQL server 2014”**. Click **NEXT**

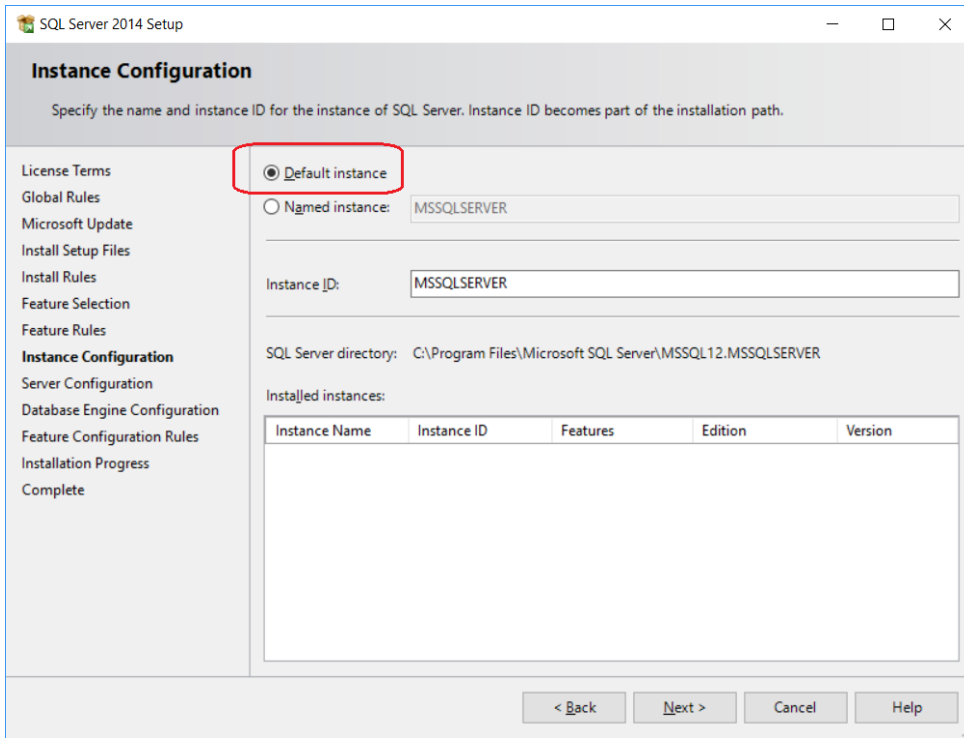


12. Click on “Select All” and then click Next button in the feature selection screen



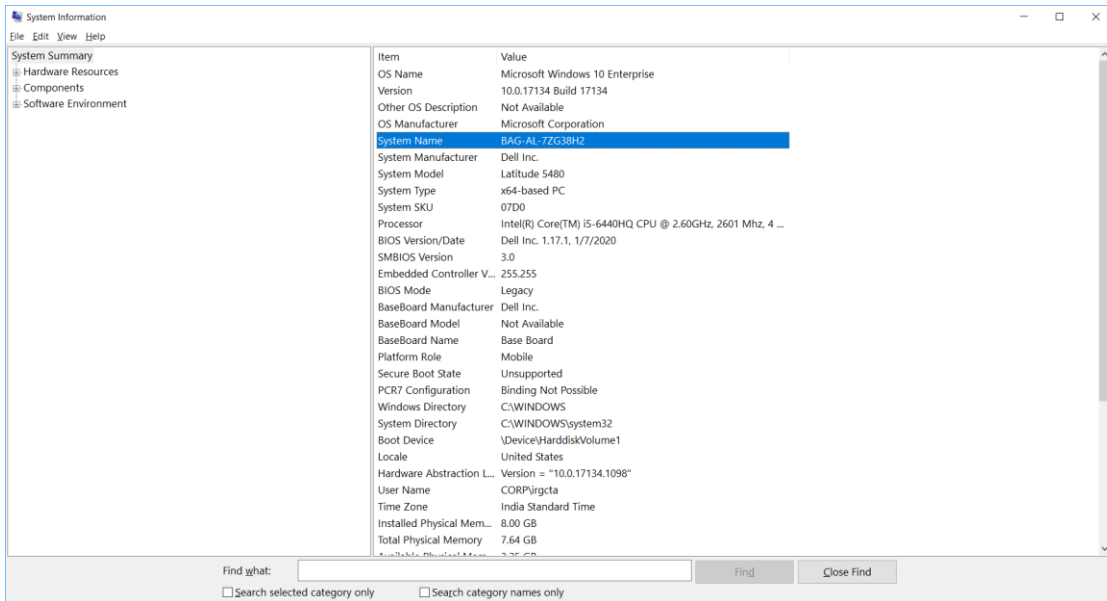
13. Instance Configuration wizard provides an option to select the default instance or named instance server.

In case of “Default Instance” selection, the installer shall consider the computer name as the SQL server instance name.



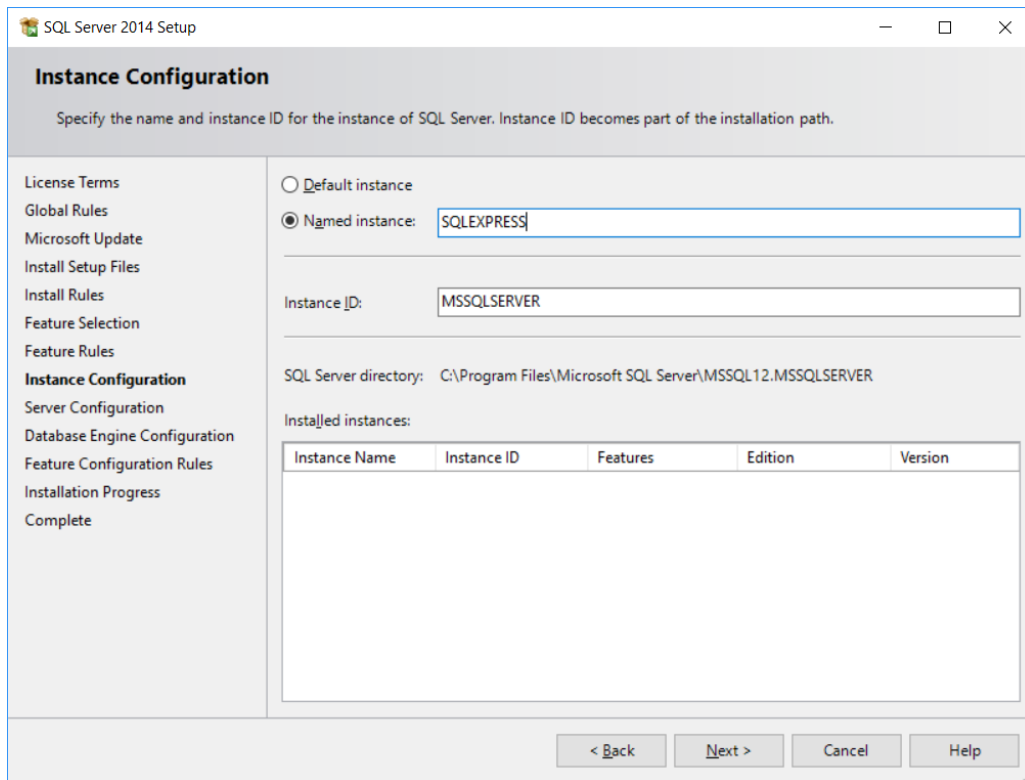
The computer name can be viewed from below mentioned steps

- From Start menu go to 'system Information'
- From the system Summary view the System Name.



In case of "Named Instance" selection, user need to provide the instance name. Now the instance name for named instance SQL server shall be "Computer Name\Name Instance" as shown in example below.

"BNG-ALC1PNVS1\SQLEXPRESS"



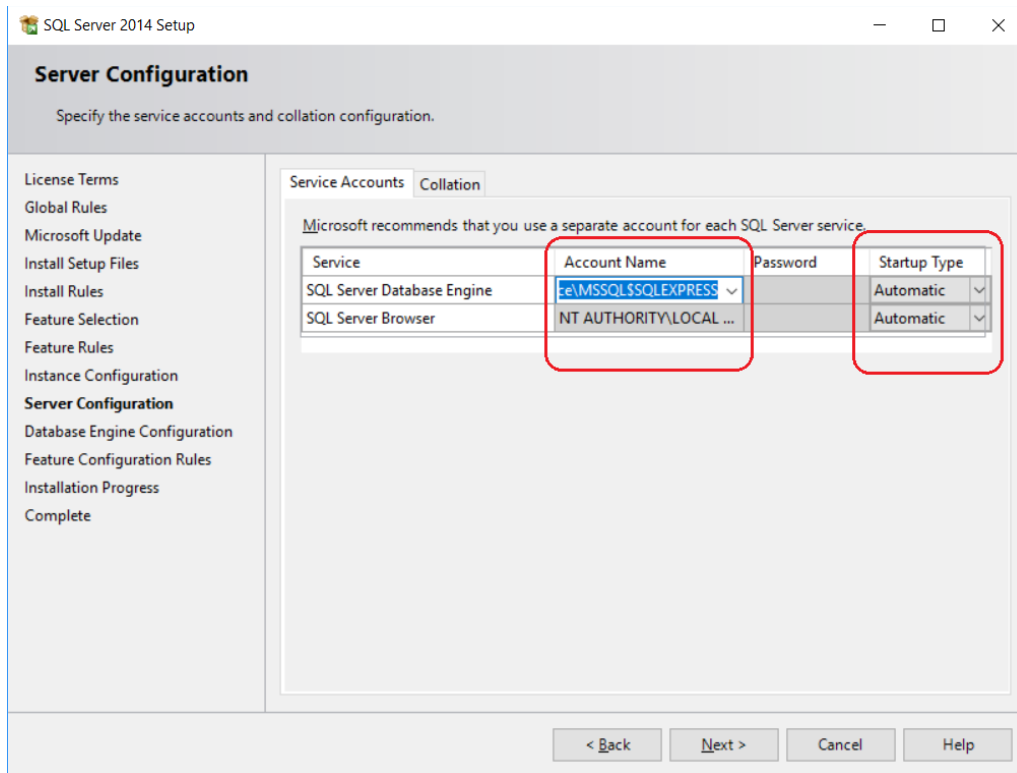
The difference between the default instance and the named instance that you connect just by specifying the server name (eg, BNG-ALC1PNVS1) for default instance, whereas a named instance will require an instance name as well (eg, BNG-ALC1PNVS1\SQLEXPRESS).

If you're only going to install one version of SQL Server on this machine, go with a default. If you're planning on multiple instances on this machine, it's up to you whether you want one named and one default, or both named.

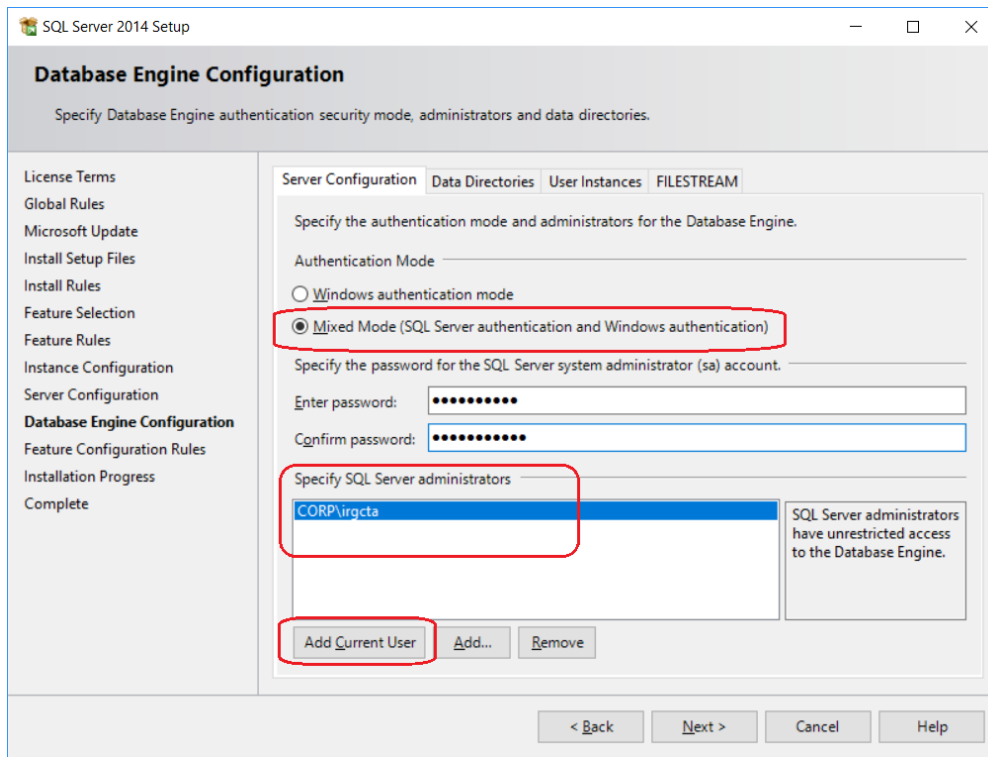
Note: During Assembly software installation, user shall need to select or enter the SQL server name for creating/connecting to the Assembly Wizard database in SQL server software. Select the "Computer Name" if the user has select Default Instance as SQL server instance. If the user has select Named Instance as SQL server instance, then select\Enter the "Computer Name\Named Instance" name for creating/connecting to the Assembly Wizard database in SQL server software.

Select the appropriate SQL server instance and Click on Next button

14. "Server Configuration" wizard allows the user to configure the Service Accounts.
  - Select the account name from the dropdown list for SQL Server Database Engine as **NT AUTHORITY\NETWORK SERVICE** which is the 1st choice of dropdown under Account Name and the startup type to Automatic.
  - For "SQL Server Browser" Set "**Startup Type**" to automatic, if not set.
  - Click Next **button**.

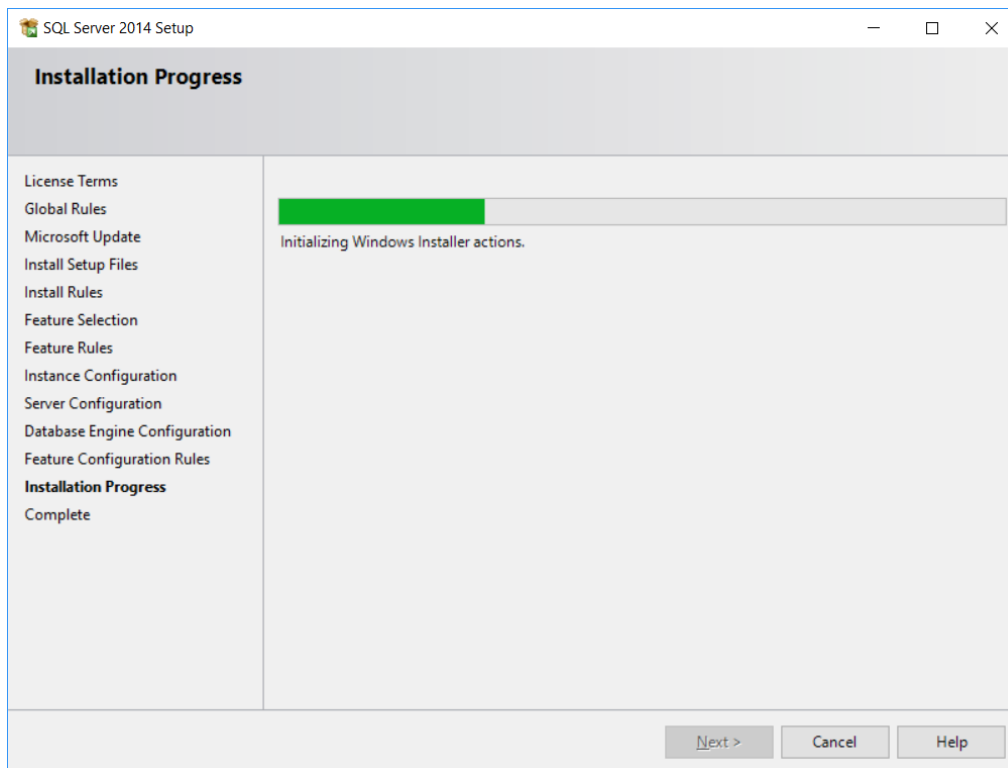


15. “Database Engine Configuration” wizard allows the user to configure the authentication mode.
- For mixed mode user has to create new password for the root account (username “sa” default). This username “sa” and password shall be used to access database engine for “SQL Server Authentication.”  
**Note: This Username and password shall be used during the Assembly Wizard software installation to create the Assembly Wizard database.**
  - For mixed mode user has to add current user, by clicking on “**Add Current User**”, by which the current user will also be able to access database engine as Windows Authentication.

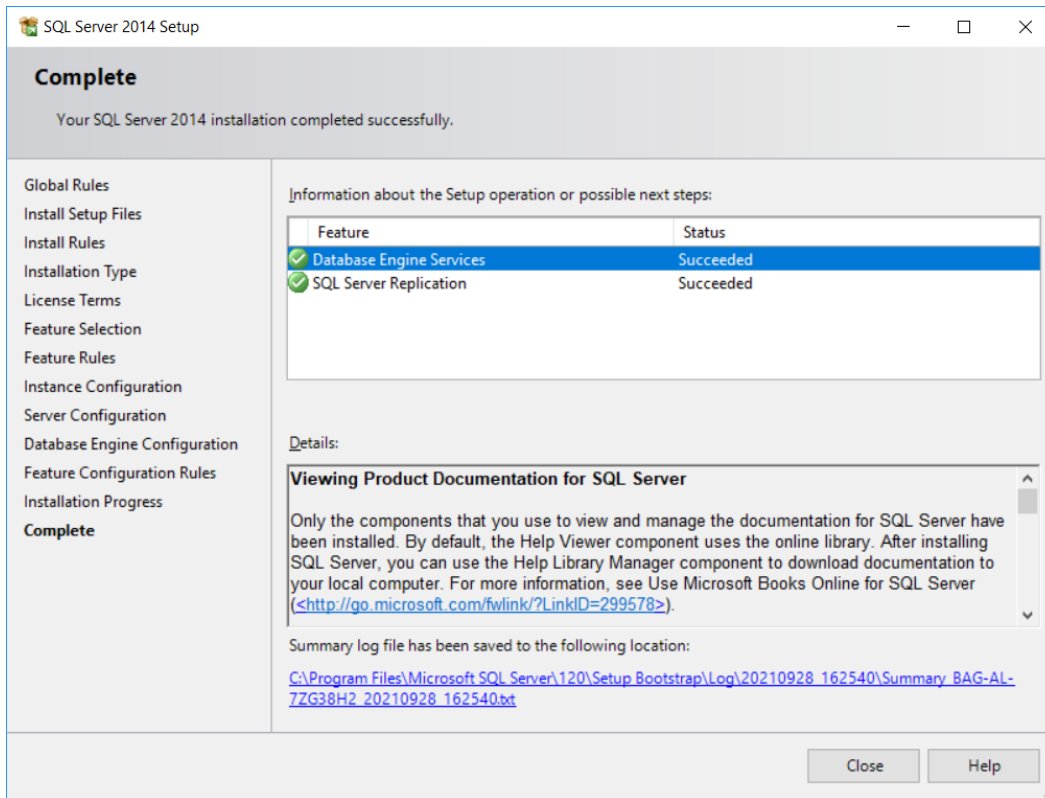


Click on Next button

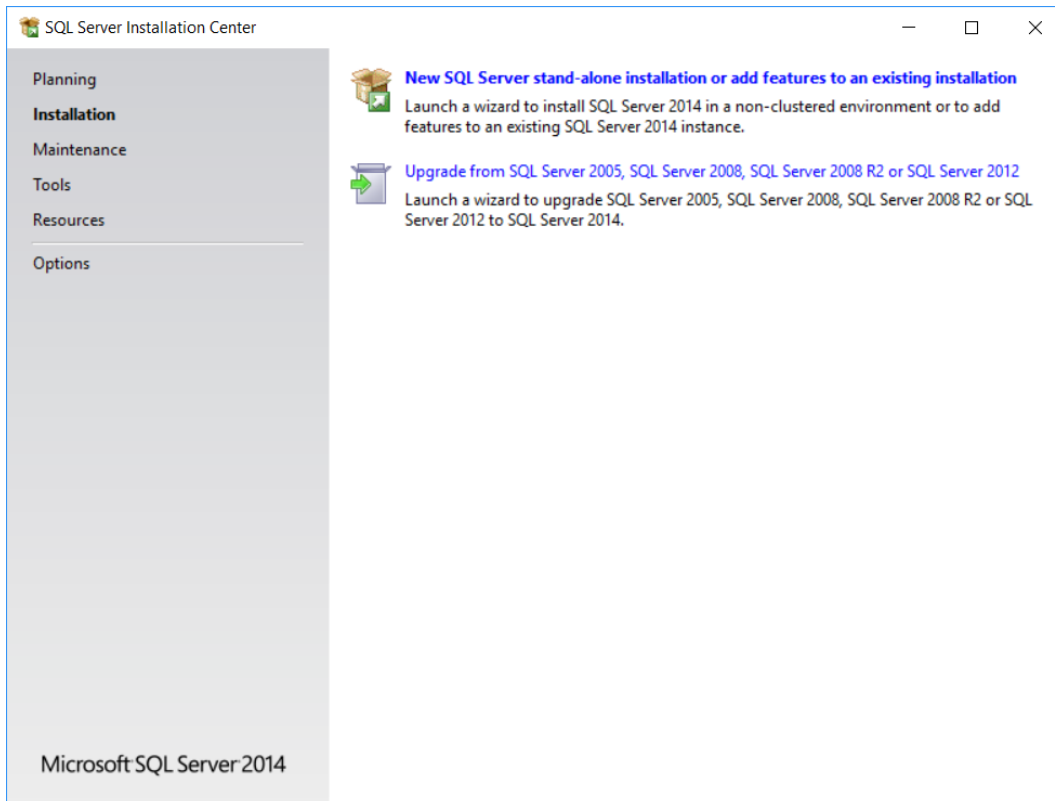
16. Installation Progress screen appears. This will take several minutes to complete.



17. Now **Close** this window



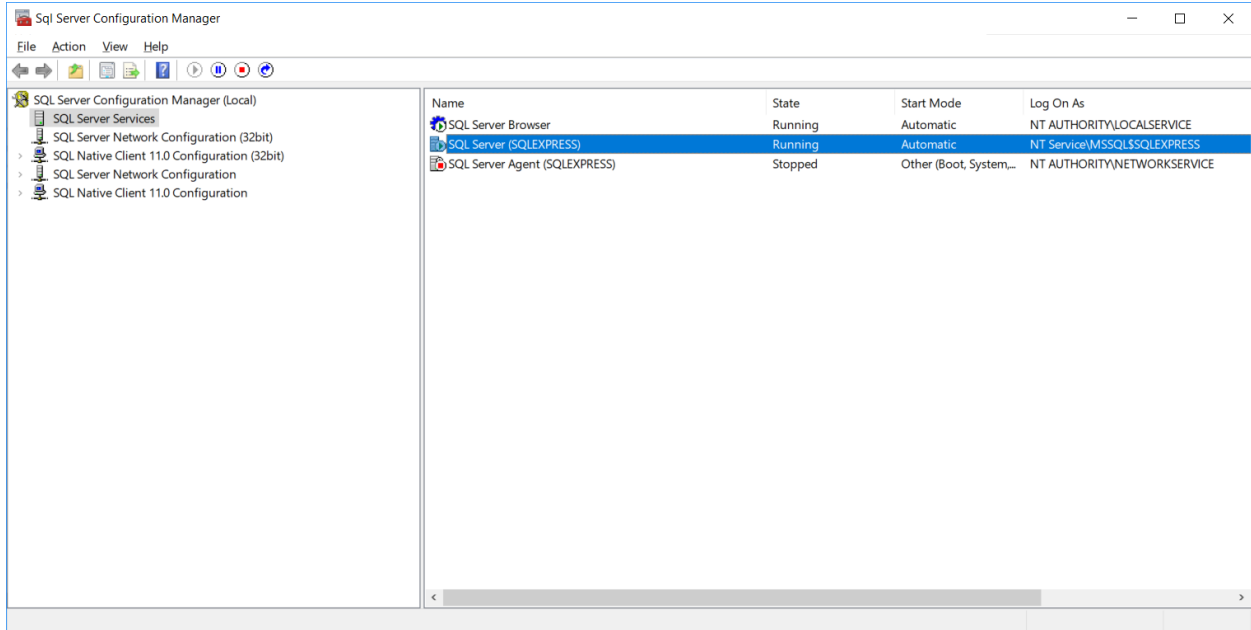
18. At last Exit this Installation center.



# Configuring SQL Server

## 1) SQL Server should be up and running.

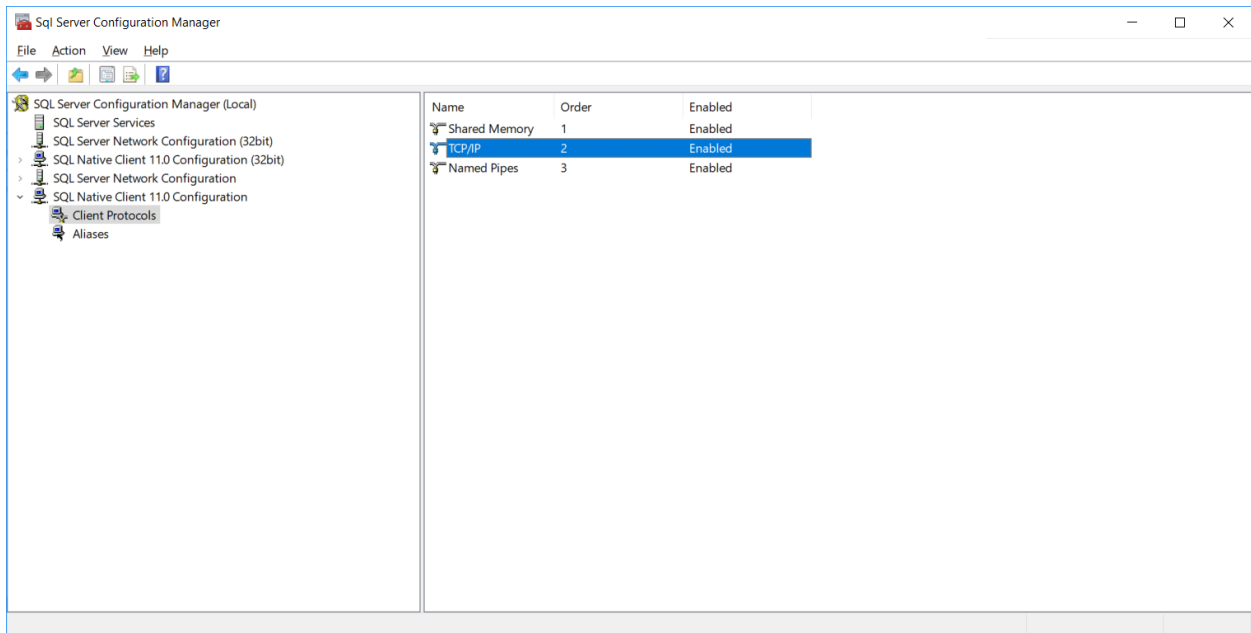
Go to Programs >> Microsoft SQL Server 2014 >> SQL Server Configuration Manager (or from start button search for 'SQL server 2014 configuration Manager'). Click open SQL Server Configuration Manager. Click on SQL Server Services and check if SQL Server service status is "Running".



## 2) Enable TCP/IP in SQL Server Configuration

When two or more SQL Servers are connected across network they do all communication using TCP/IP. The default port of SQL Server installation is 1433. This port can be changed through SQL Server Configuration Manager. TCP/IP should be enabled for SQL Server to be connected.

Go to SQL Server Configuration Manager >> Select TCP/IP. Right Click on TCP/IP >> Click on Enable





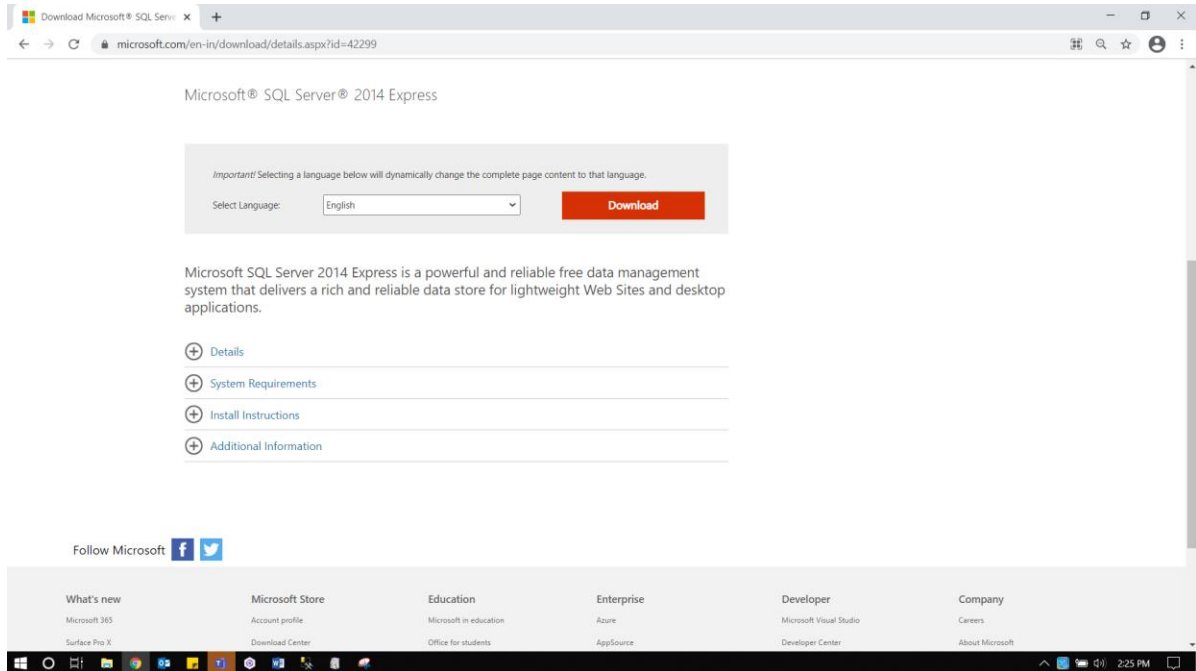
# Downloading Server Management Studio

Server management studio provides ways to manage the databases

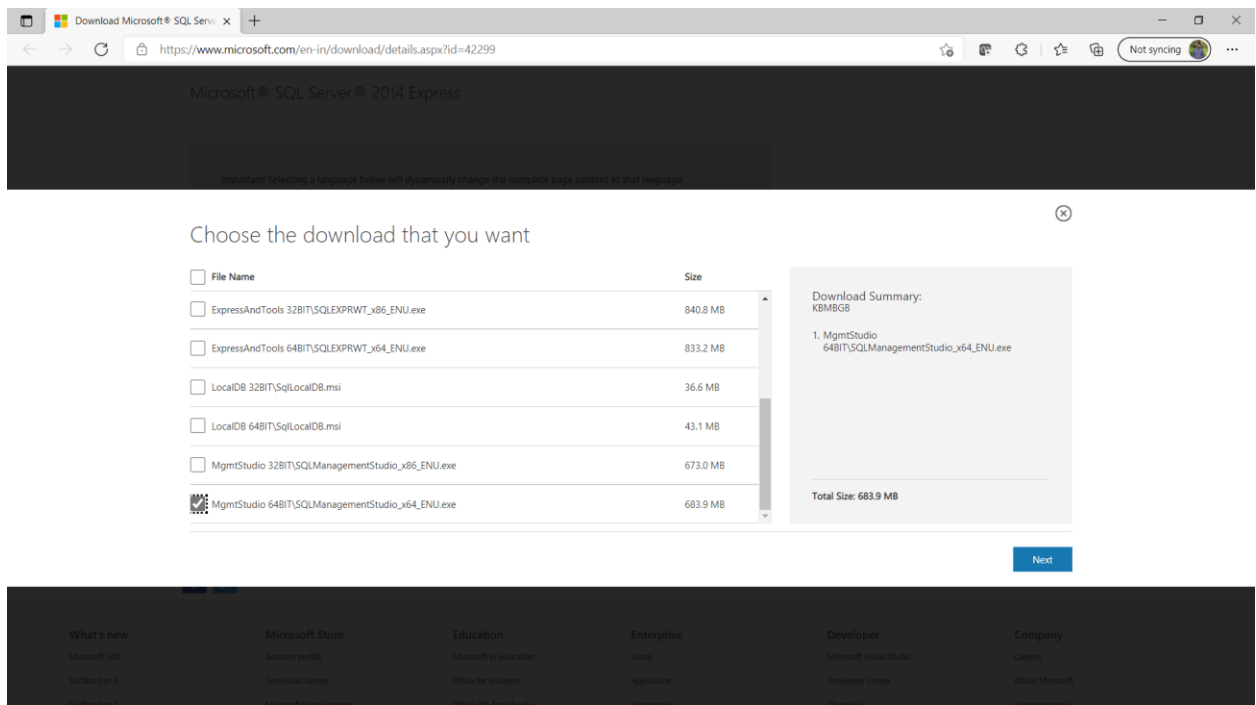
1. Open the link mentioned below in your browser

<https://www.microsoft.com/en-in/download/details.aspx?id=42299>

**Note:** This link may change time to time. Please check in internet if unable to see the webpage as shown below



2. Click on download button in step 1 which will bring up the screen below

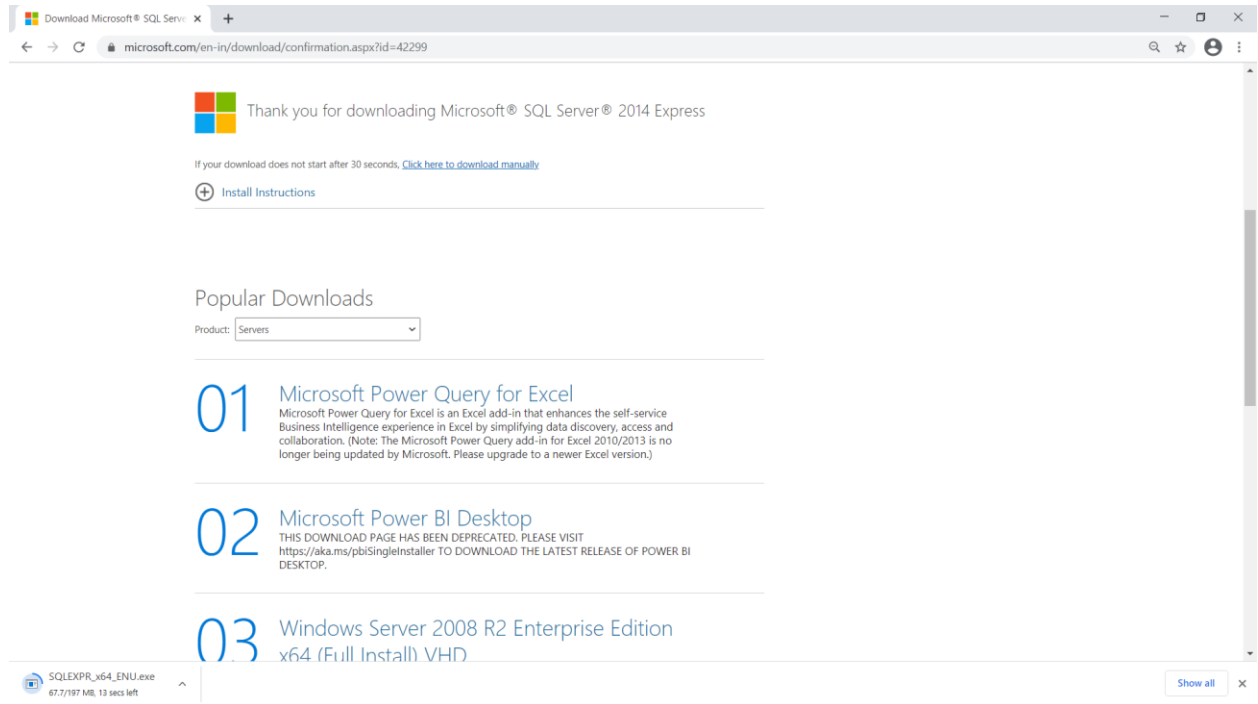


Select the appropriate .exe

**MgmtStudio 32BIT\SQLManagementStudio\_x86\_ENU.exe**- This contains 32bit binaries only. If installing on a 32bit operating system, use this package.

**MgmtStudio 64BIT\SQLManagementStudio\_x64\_ENU.exe** - x64 package for native x64 SQL Server Express on a 64bit operating system.

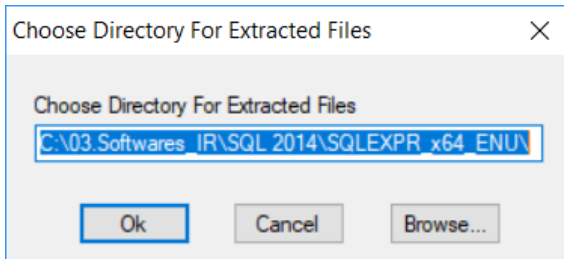
3. Click on 'Next' button of step2 which will start download exe.



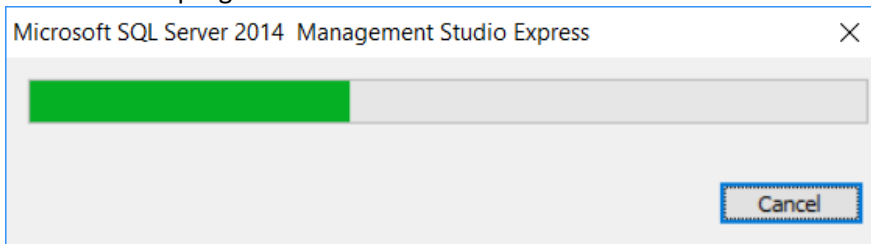
## Server Management Studio installation steps:

Installation of this software is not required, however, if you need service support from Ingersoll Rand at a later date, Server Management Studio will need to be installed in order for Ingersoll Rand to see your data. This installation should take less than 30 minutes to install assuming your PC has no firewalls or limitations for the size of the program.

1. Double click on the EXE file (or right click and Run), which is downloaded using the steps mentioned above. It will show the screen to extract files. Keep the default directory path as it is and Click on OK.



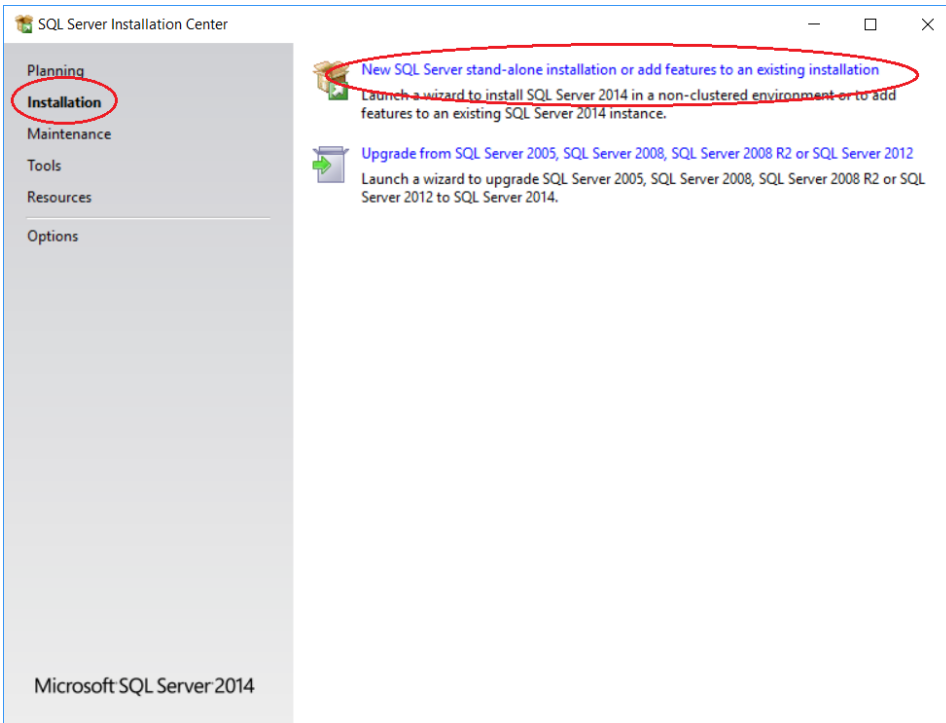
2. This will show progress screen and will take few seconds.



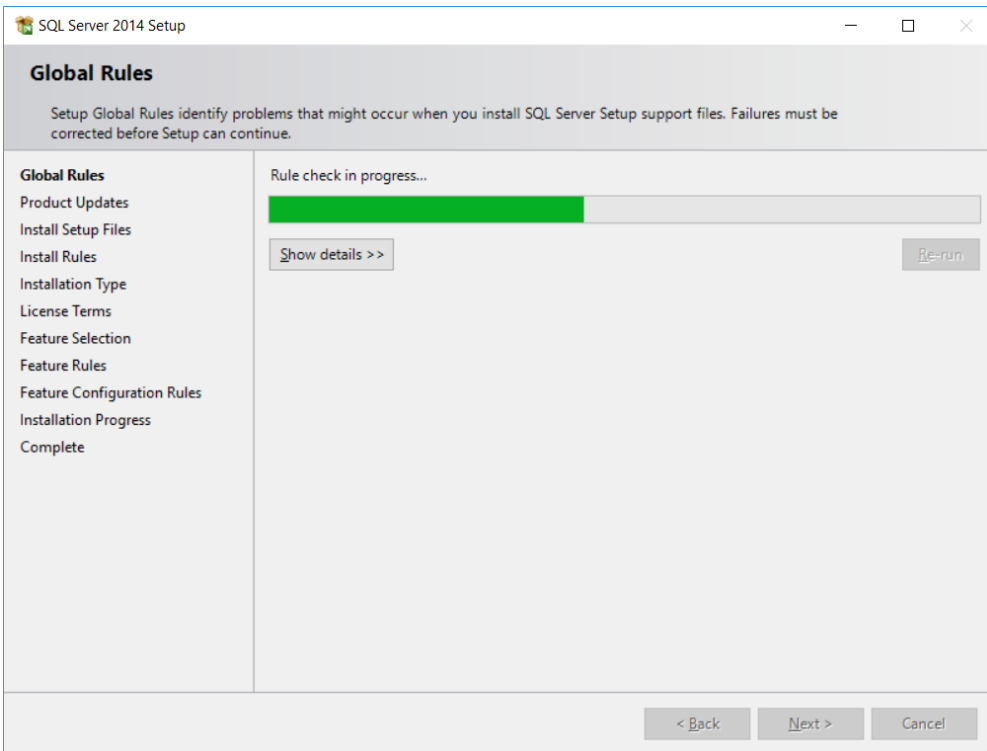
3. After completion of extracting files, 'SQL Server Installation Center' window appears as shown below.



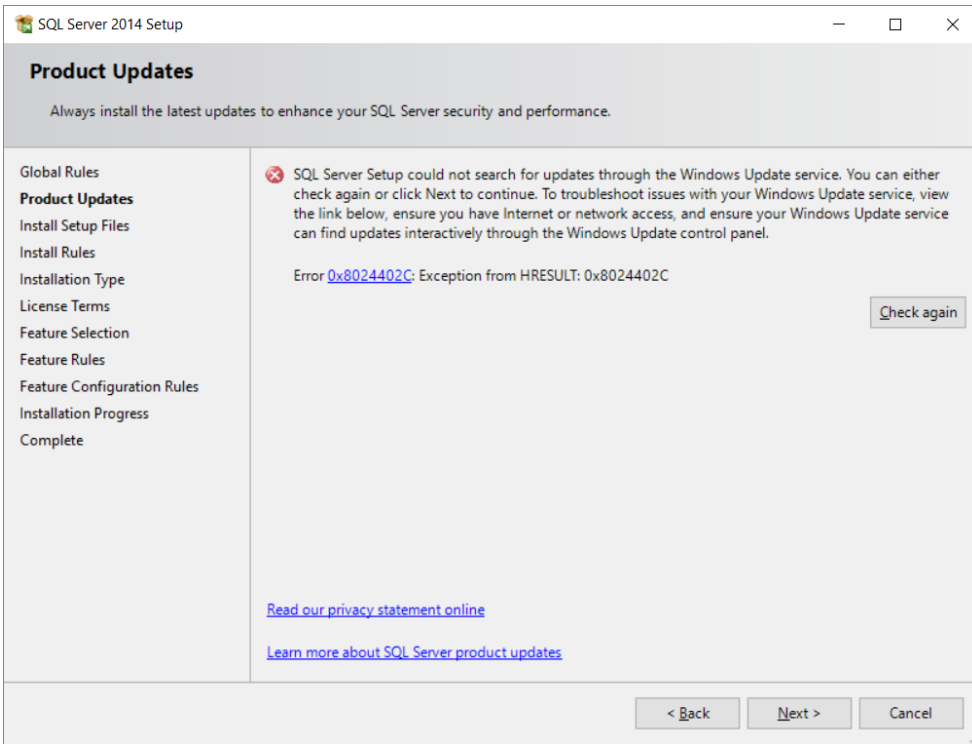
4. Make sure to select "Installation" option from the left side pane and Click on "New SQL Server stand-alone installation or add features to an existing installation".



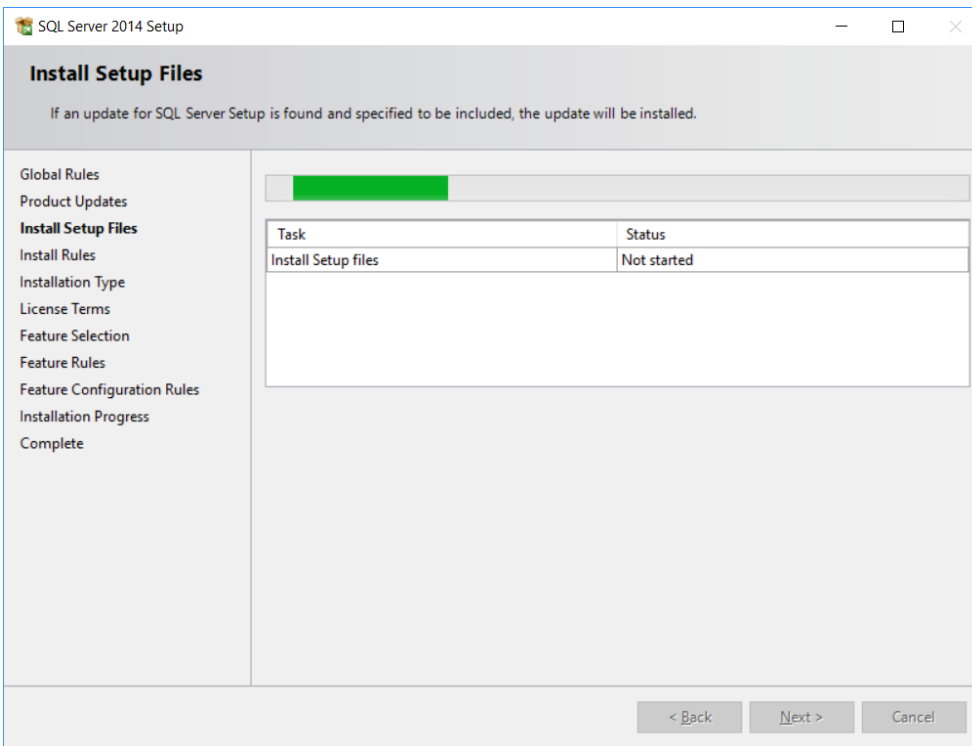
5. It will then run a rule check. Make sure there are no failures. If there are any issues, try re-running again. If the issues are still persisting, contact your IT administrator for troubleshooting. If all rules are pass, then setup will automatically move to next screen.



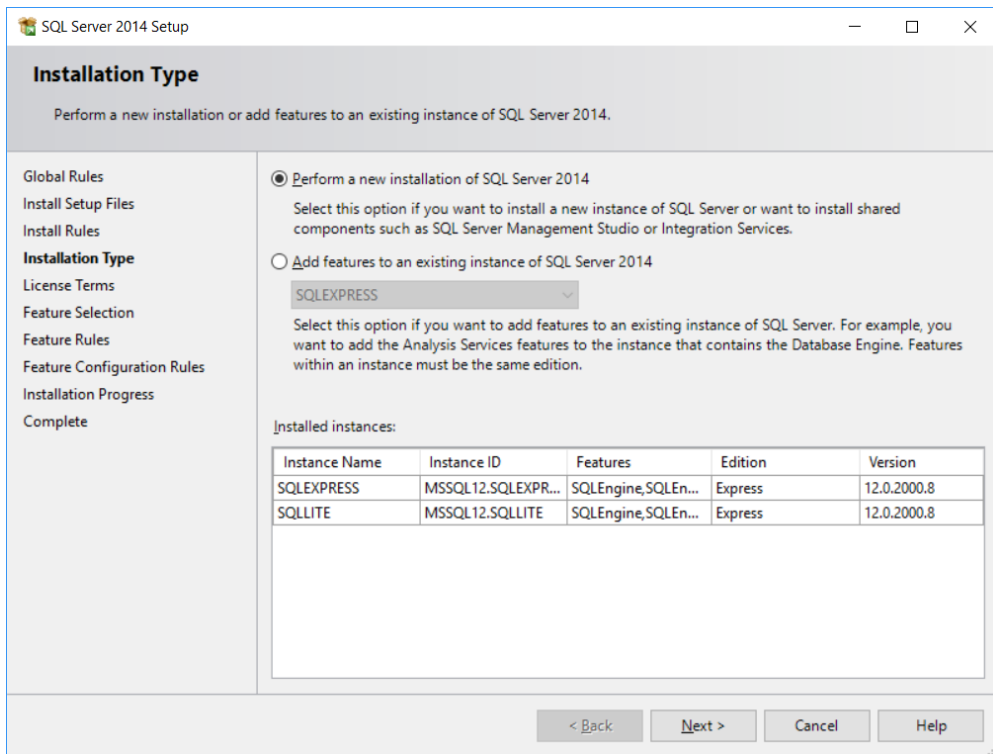
6. Microsoft product update screen comes up. Click on Next to continue. Discard any error message shown on this screen.



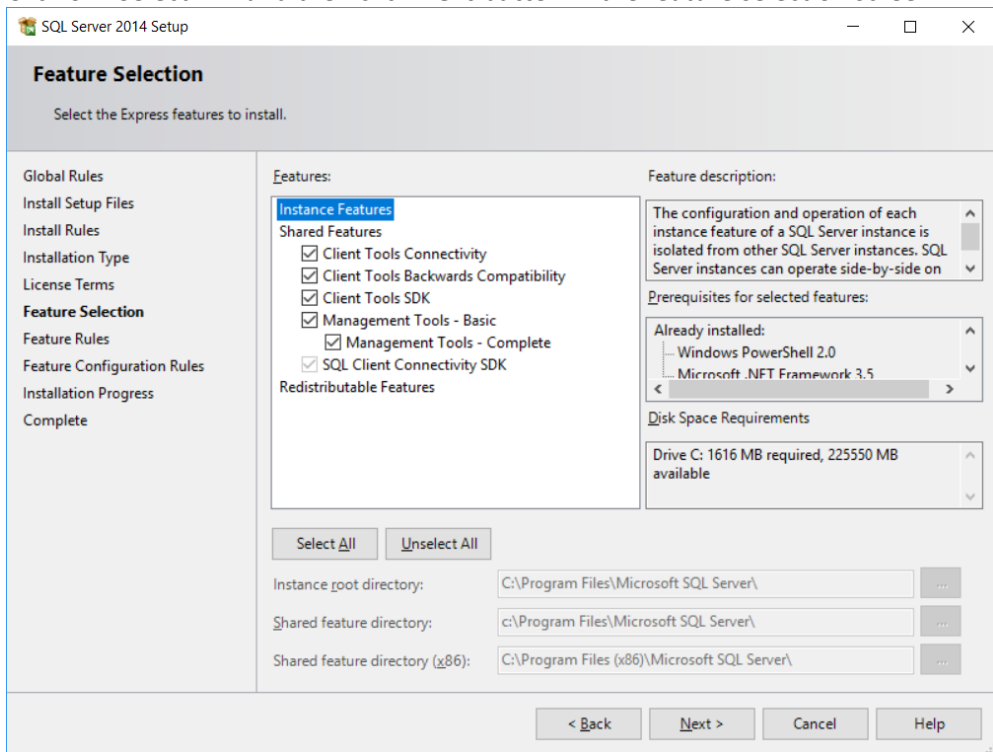
7. Setup searches for the update SQL server



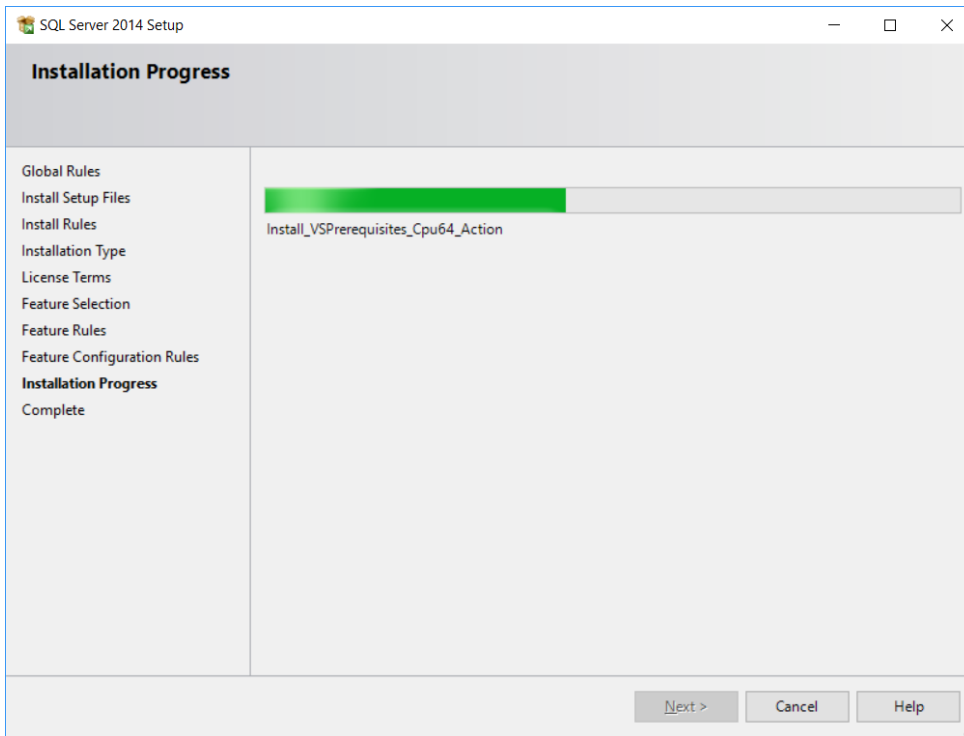
- 8. Select **“Perfrom a new installation of SQL Server 2014”** and do NOT select **“Add features to an existing instance of SQL server 2014”**. Click **NEXT**



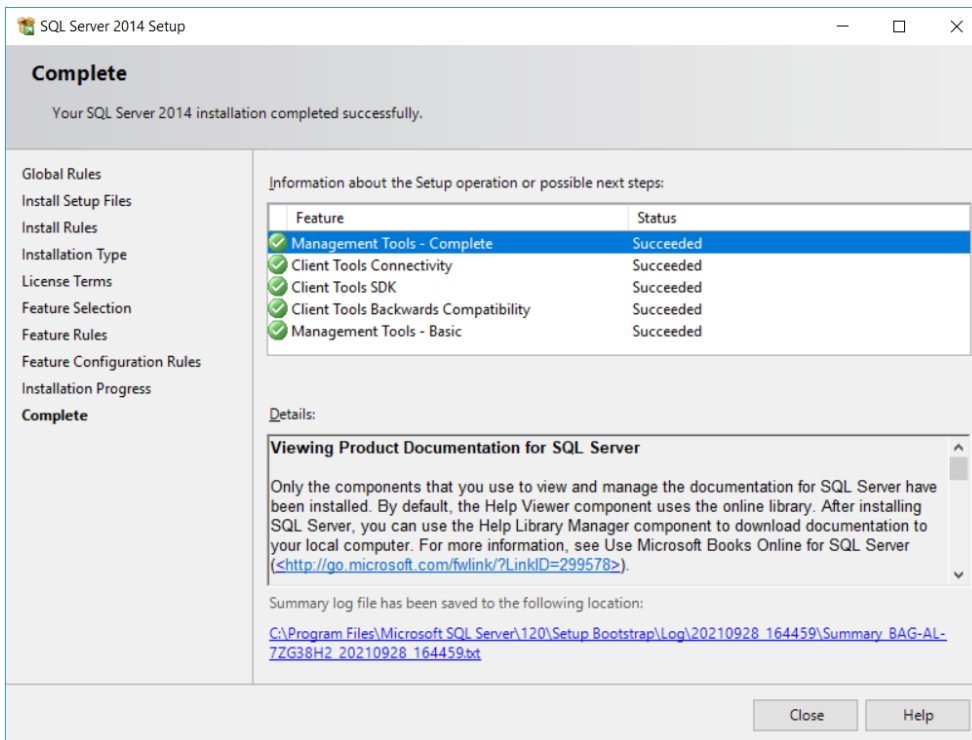
9. Click on “Select All” and then click **Next** button in the feature selection screen



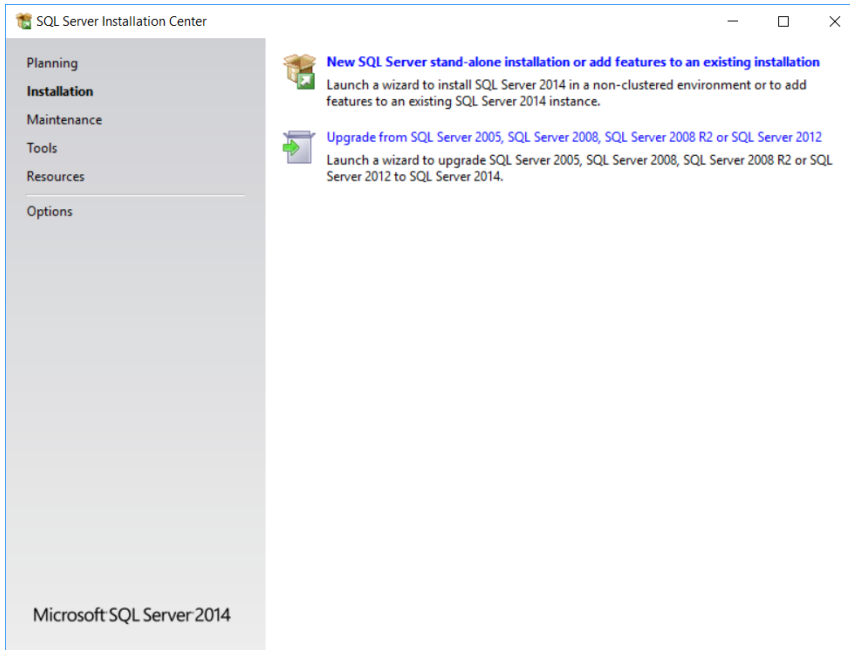
10. This will run rule checks again and shows installation progress screen.



11. Once the installation completes, click on close.



12. Now close the SQL Server Installation Center screen.

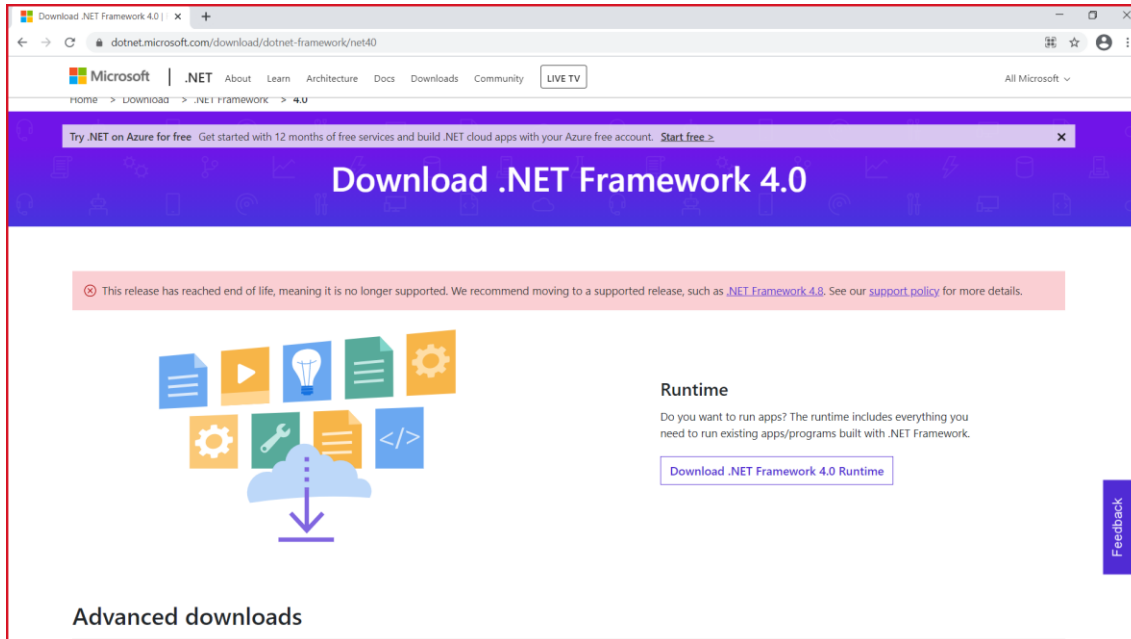


User should be able to see “SQL Server 2014 Management Studio” program added in windows start menu.

## .NET Framework Installation

It is required that .NET 4.0 or later versions framework to be installed for SQL express and Assembly Wizard software to work normally. Seek help from your IT department to use the link below to download and install the framework.

<https://dotnet.microsoft.com/download/dotnet-framework/net40>



Click on download .net framework runtime. After downloading .exe file, Click on run to install the framework, proceed with the default options to install the .NET framework.