



CE UK
CA EAC

TL-1211-PLM
Edition 2
January 2022

Air Impact Ratchet Wrench

1211MAX-D3, 1211MAX-D4

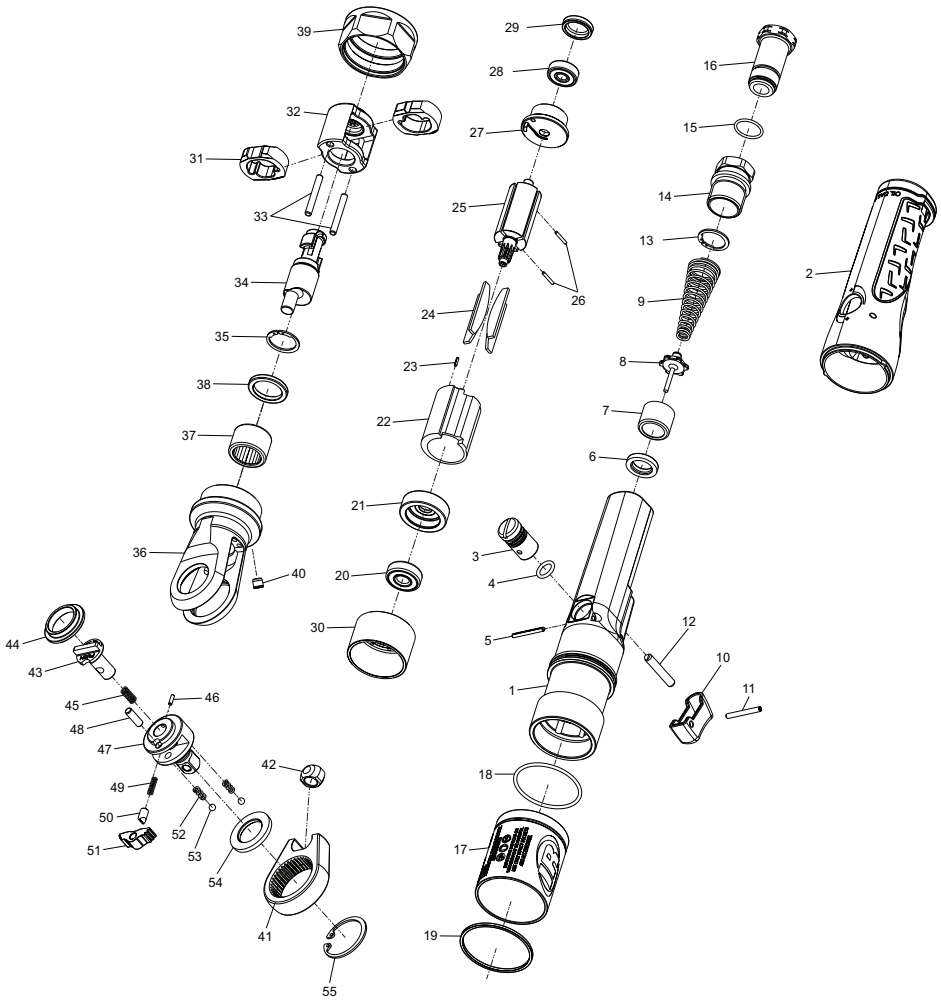
Parts Information



Save These Instructions

 **Ingersoll Rand**[®]

1211MAX-D3, 1211MAX-D4, Air Impact Ratchet Wrench - Exploded View



(Dwg. TL-1211-PLM-1)

1211MAX-D3, 1211MAX-D4, Air Impact Ratchet Wrench - Parts List

Item	Part Description	Part Number	(CCN)	Item	Part Description	Part Number	(CCN)
	Housing Assembly	1211MAX-A40	(1211MAX-A40)		Ratchet Housing Assembly	1211-A322	(1211-A322)
1	Housing	---	---	36	Ratchet Housing	---	---
2	Handle Grip	1211-747	(1211-747)	37	Needle Bearing	---	---
	Valve Kit	1211-VK	(1211-VK)	38	Latch Spring Bushing	---	---
3	Regulator	1211-249	(1211-249)	39	Coupling Nut	1211-27	(1211-27)
4	O-Ring	---	---	40	Hammer Case Grease Fitting	1211-879	(1211-879)
5	Spring Pin	---	---	41	Yoke	1211-37	(1211-37)
6	Seal Unit	1211-303	(1211-303)	42	Drive Bushing	1211-36	(1211-36)
7	Bushing	1211-503	(1211-503)		Ratchet Head Kit		
8	Throttle Valve	1211-50	(1211-50)		For 1211MAX-D3	1211-D3-TRK1	(1211-D3-TRK1)
9	Spring	1211-51	(1211-51)		For 1211MAX-D4	1211-D4-TRK1	(1211-D4-TRK1)
	Trigger Kit	1211-TK	(1211-TK)		Reverse Button Kit	1211-K38	(1211-K38)
10	Trigger	---	---	43	Reverse Button	---	---
11	Spring pin	---	---	44	Anvil Latch Spring Bushing	---	---
12	Valve Stem	---	---	45	Spring	---	---
	Inlet Bushing Assembly	1211-A565	(1211-A565)	46	Pin	---	---
13	Retaining Ring	---	---	47	Drive Assembly		
14	Air Inlet	---	---		For 1211MAX-D3	1211-D3-A44	(1211-D3-A44)
15	O-Ring	---	---		For 1211MAX-D4	1211-D4-A44	(1211-D4-A44)
16	Air Inlet (NPT 1/4"-18)	---	---		Pawl Kit	1211-K43	(1211-K43)
17	Motor Housing	1211-40	(1211-40)	48	Pawl Retaining Pin	---	---
18	O-Ring	1211-65	(1211-65)	49	Lock Spring	---	---
19	Gasket	1211-223	(1211-223)	50	Lock Pin	---	---
	Motor Assembly	1211-MK	(1211-MK)	51	Ratchet Pawl	---	---
20	Front Rotor Bearing	1211-24	(1211-24)		Spring Kit	1211-SK	(1211-SK)
21	Front End Plate	1211-11	(1211-11)	52	Thrust Washer Spring (2)	---	---
22	Cylinder	1211-3	(1211-3)	53	Ball (2)	---	---
23	Motor Alignment Pin	1211-412	(1211-412)	54	Thrust Washer	---	---
24	Vanes (Set of 4)	1211-42-4	(1211-42-4)	55	Retaining Ring	---	---
25	Rotor	1211-53	(1211-53)	*	Air Tool Oil (4 oz. Bottle)	10Z4	(03875671)
26	Pin (2)	1211-98	(1211-98)	*	Air Tool Oil (1 Pint Bottle)	10P	(03875689)
27	Rear End Plate	1211-12	(1211-12)	*	For Ratchet Head (1 lb can)	70 1 LB	(03364619)
28	Rear Motor Bearing	1211-22	(1211-22)	*	For Ratchet Head (8 lb can)	70 8 LB	(03820024)
29	Housing Cover	1211-981	(1211-981)	*	Premium Impact Grease (1 lb can)	105-1LB	(04279147)
30	Connecting Collar	1211-930	(1211-930)	*	Premium Impact Grease (8 lb can)	105-8LB	(04264875)
31	Hammer (2)	1211-724	(1211-724)	*	Grease Gun	R000A2-228	(R000A2-228)
	Hammer Mechanism Kit	1211-THK1	(1211-THK1)				
32	Hammer Frame	1211-703	(1211-703)				
33	Hammer Pin (2)	1211-704	(1211-704)				
	Anvil Assembly	1211-A626	(1211-A626)				
34	Anvil	1211-626	(1211-626)				
35	Retaining Ring	1211-338	(1211-338)				

* Indicates not illustrated.

Parts and Maintenance

When tool life has expired, it is recommended that the tool be disassembled, degreased and parts separated by material for proper recycling.

Tool repair and maintenance should only be carried out by an authorized Service Center.

Refer all communications to the nearest **Ingersoll Rand** office or distributor.

Related Documentation

Manuals can be downloaded from ingersollrand.com

For additional information, refer to:

Product Safety Information Manual 04580361

Product Information Manual TL-1211-PIM

Declaration of Conformity TL-1211-DOC

Notes:

Notes:

Notes:

[ingersollrand.com](https://www.ingersollrand.com)

© 2022 *Ingersoll Rand*

