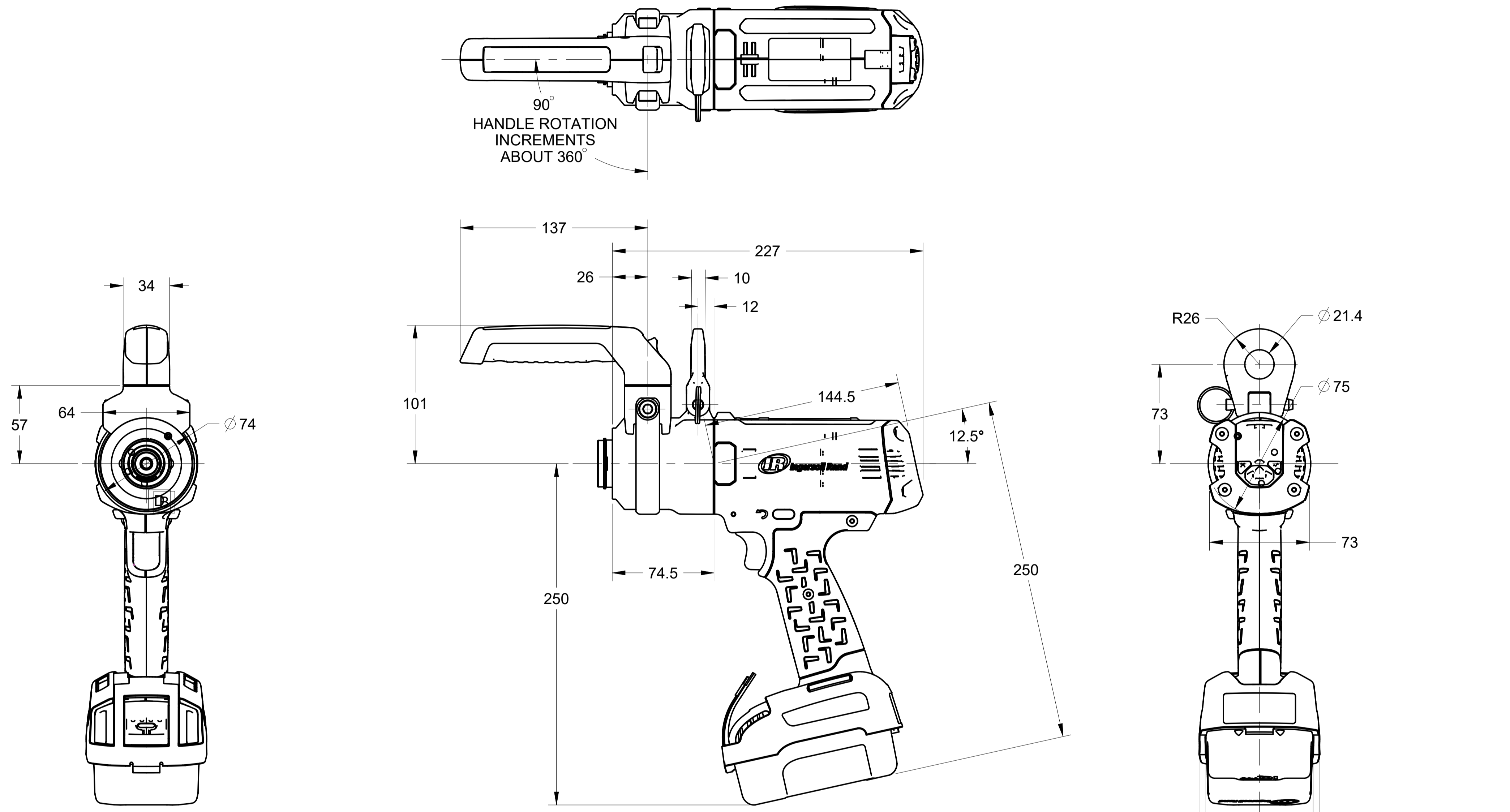


NOTES:
1. THIS DRAWING IS FOR ENGINEERING REFERENCE ONLY.

REVISIONS					
ZONE	REV	ECN	DESCRIPTION	DATE	APPROVED
	A	1401995	ENGINEERING RELEASED	11/19/2020	R.YOUNG G.GINDER



QX--5P-012PM00
QX 40V PISTOL, 12 NM, STANDARD POWER UNIT

88.4
BATTERY RETAINER
FOR HAZLOC TOOLS

WARNING: THE EXPORT OR REEXPORT OF THIS DRAWING OR A PRODUCT PRODUCED BY THIS DRAWING IS SUBJECT TO U.S. EXPORT ADMINISTRATION REGULATIONS AND OTHER APPLICABLE GOVERNMENT RESTRICTIONS OR REGULATIONS.

PROPRIETARY NOTICE
THIS DRAWING CONTAINS CONFIDENTIAL AND TRADE SECRET INFORMATION, IS THE PROPERTY OF INGERSOLL-RAND CO., AND IS GIVEN TO THE RECEIVER IN CONFIDENCE. THE RECEIVER BY RECEPTION AND RETENTION OF THE DRAWING ACCEPTS THE DRAWING IN CONFIDENCE AND AGREES THAT, EXCEPT AS AUTHORIZED IN WRITING BY INGERSOLL-RAND CO., IT WILL (1) NOT USE THE DRAWING OR ANY COPY THEREOF OR THE CONFIDENTIAL OR TRADE SECRET INFORMATION THEREIN; (2) NOT COPY THE DRAWING; (3) NOT DISCLOSE TO OTHERS EITHER THE DRAWING OR THE CONFIDENTIAL OR TRADE SECRET INFORMATION THEREIN; AND (4) UPON COMPLETION OF THE NEED TO RETAIN THE DRAWING, OR UPON DEMAND, RETURN THE DRAWING, ALL COPIES THEREOF, AND ALL MATERIAL COPIED THEREFROM.

DO NOT SCALE DRAWING
DRAWING CONFORMS TO ISO 1101

CAD GENERATED DRAWING,
NO MANUAL REVISIONS ALLOWED

UNLESS OTHERWISE SPECIFIED:
- REMOVE ALL BURRS AND SHARP CORNERS
- WELD SYMBOLS TO BE IN ACCORDANCE WITH NFE 52-109 1-2

COPYRIGHT @ 2020
Ingersoll Rand
ALL RIGHTS RESERVED

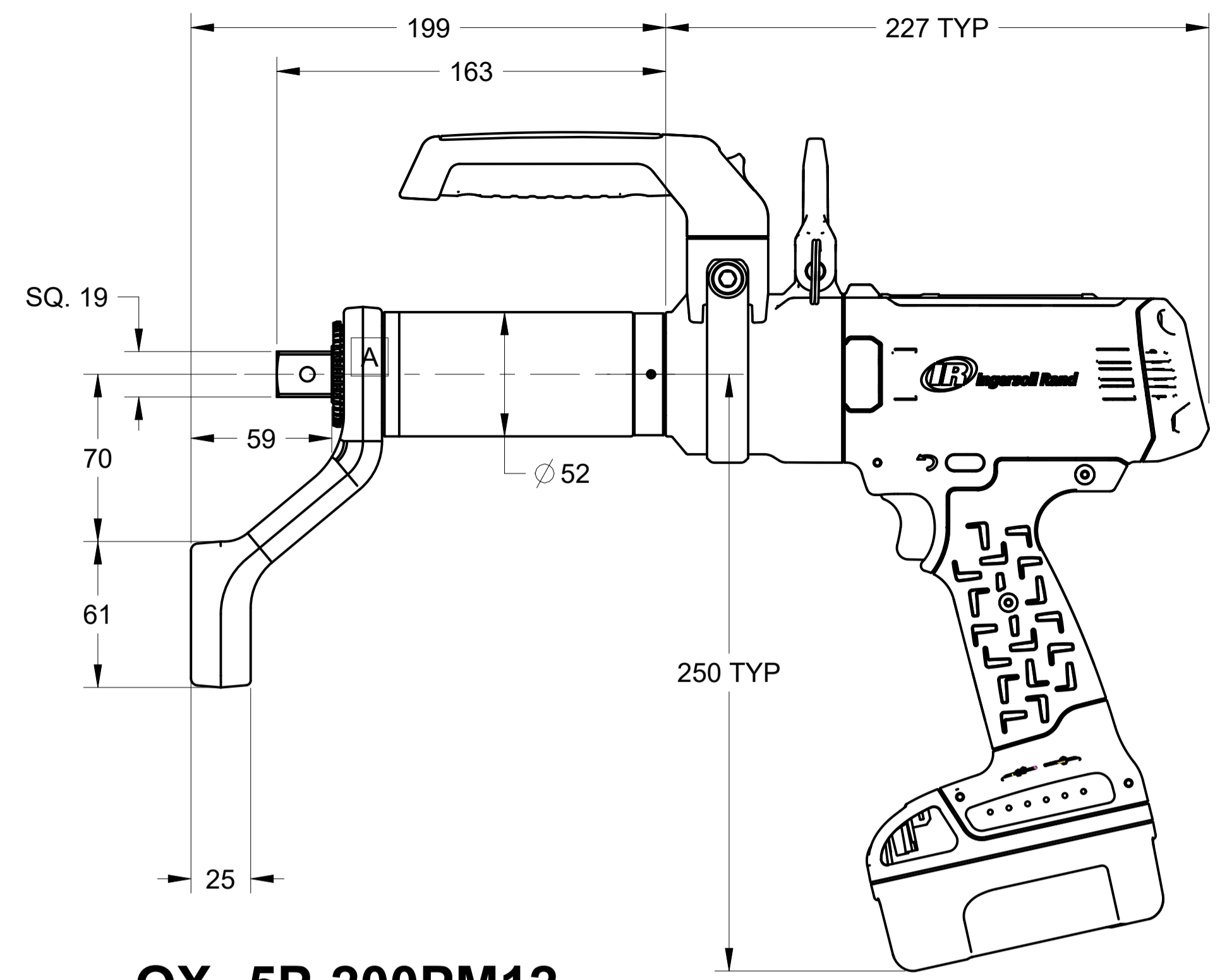
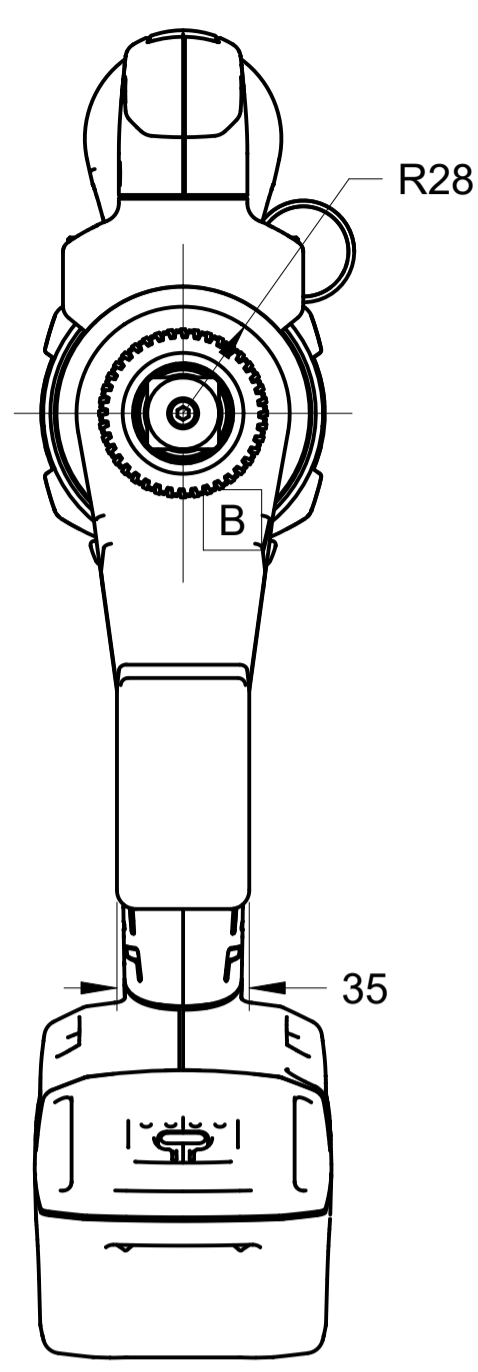
THIRD ANGLE PROJECTION	
DRAWN	DATE
R.YOUNG	06/09/2020
CHECKED	DATE
G.GINDER	06/09/2020
APPROVED	DATE
G.GINDER	06/09/2020

QX 40V PISTOL FAMILY OUTLINE INFORMATION			
NAME	PART NO.		REVISION
	TE-VP2-OUTLINE		A
SIZE	ESTIMATED WEIGHT (NO UNLESS OTHERWISE SPECIFIED)		
A1	0.0 kilogram		
SCALE	MODEL	SHEET	1 OF 3
0.50			

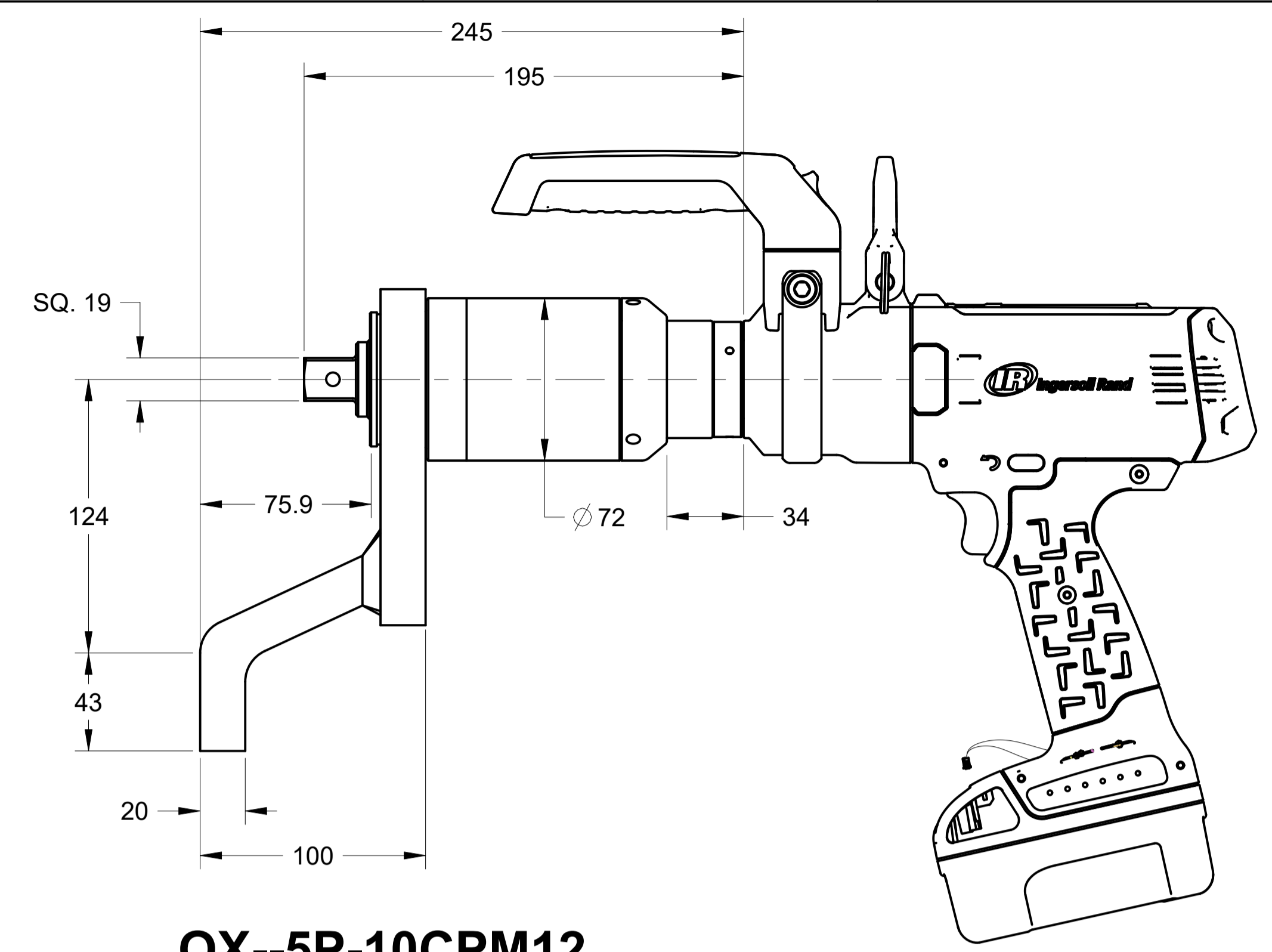
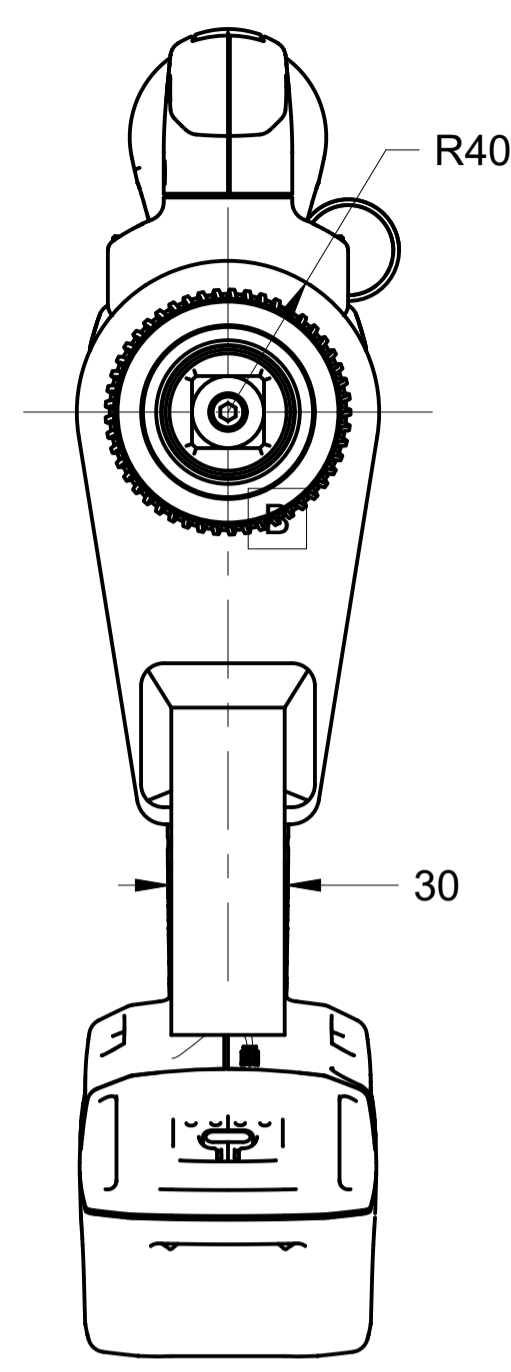
8 7 6 5 4 3 2 1

D C B A

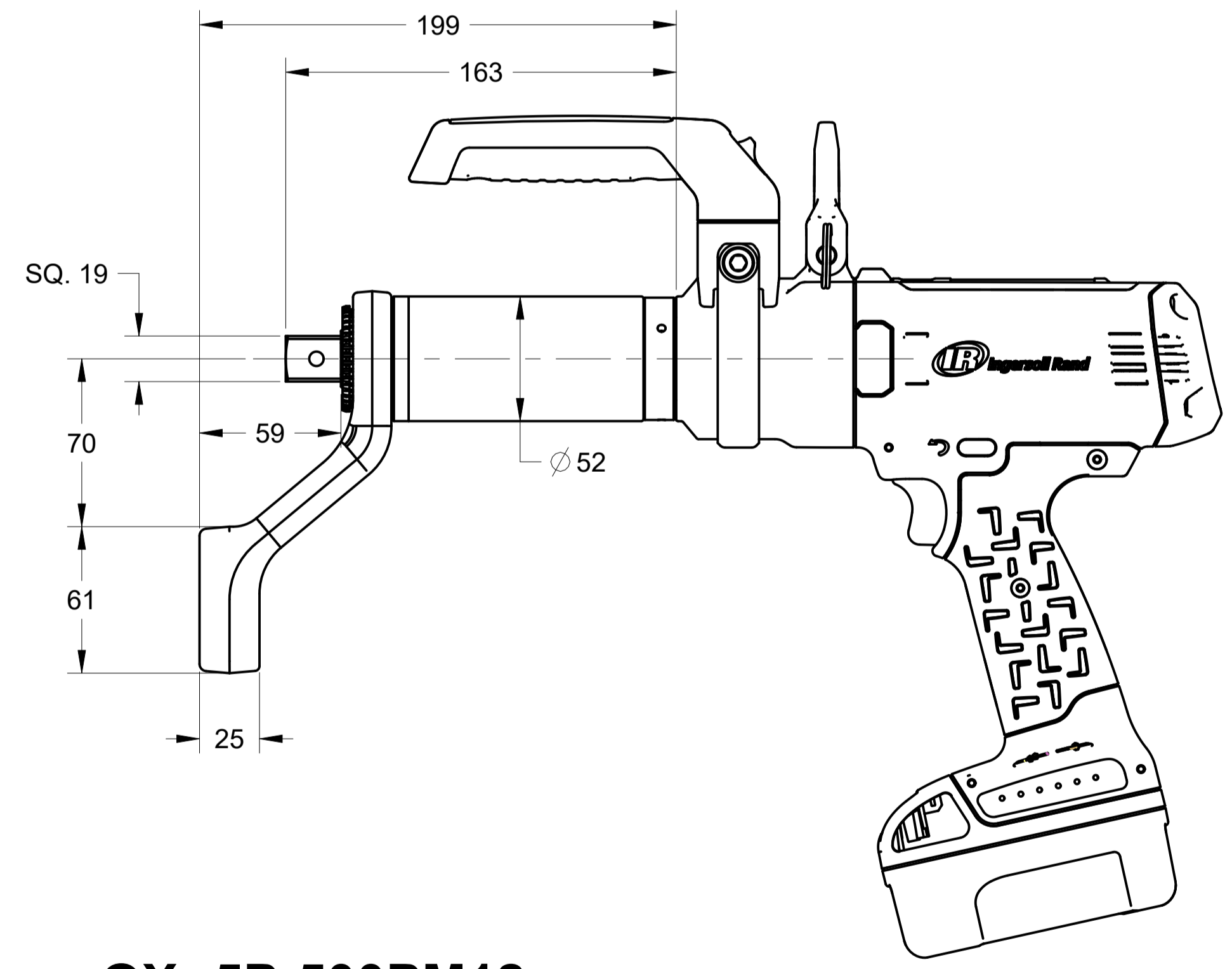
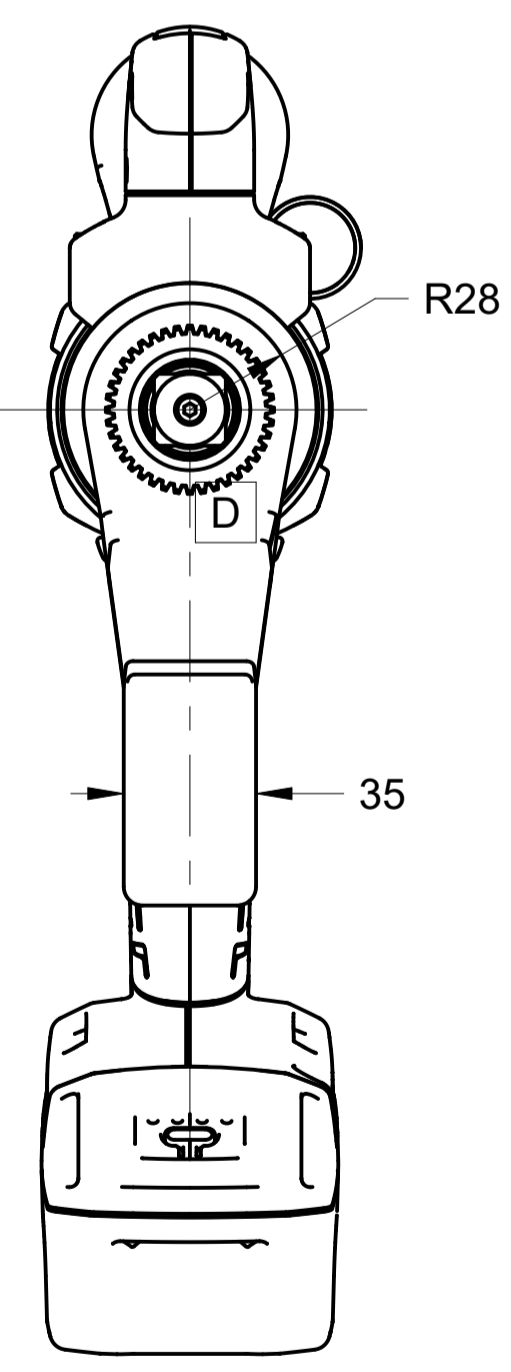
D C B A



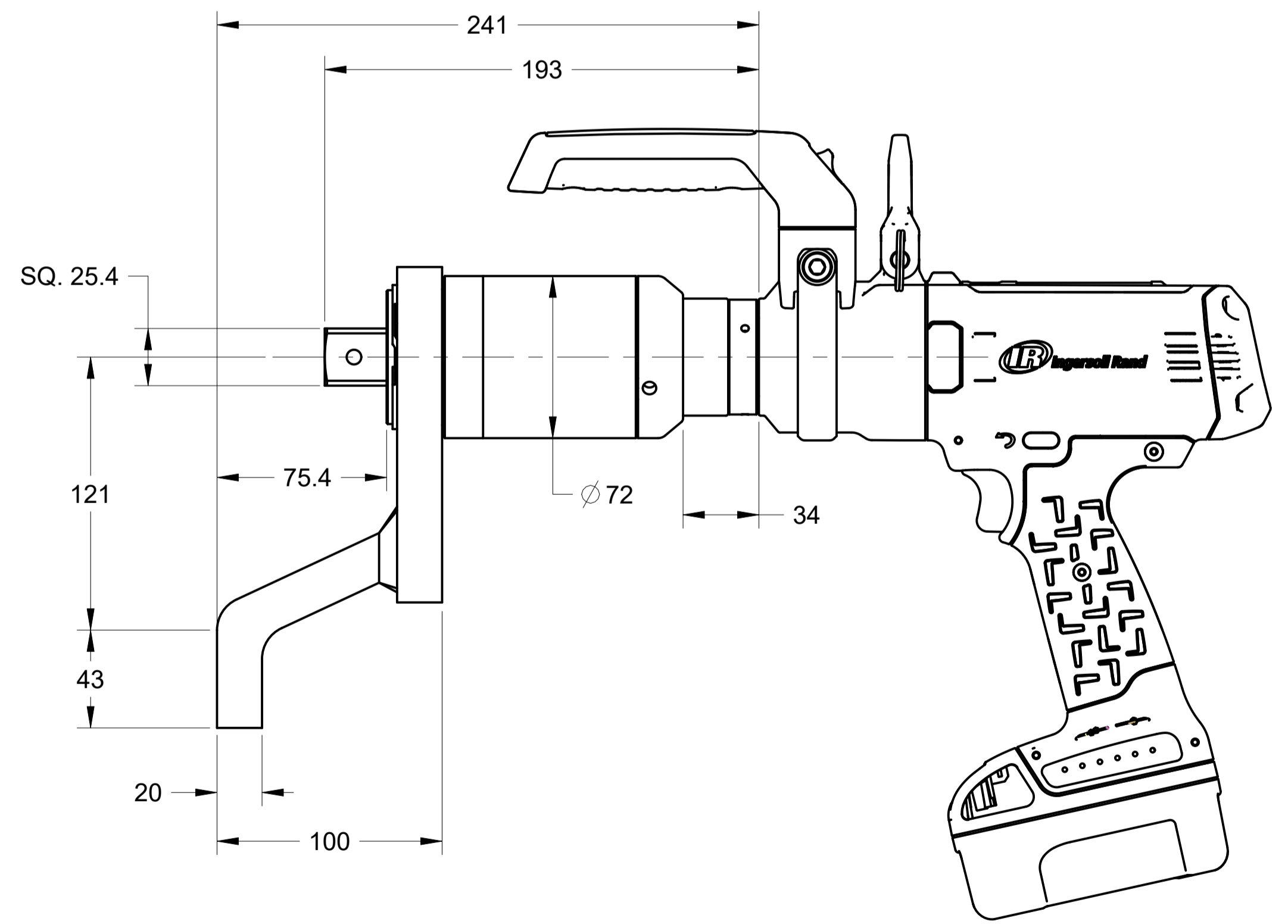
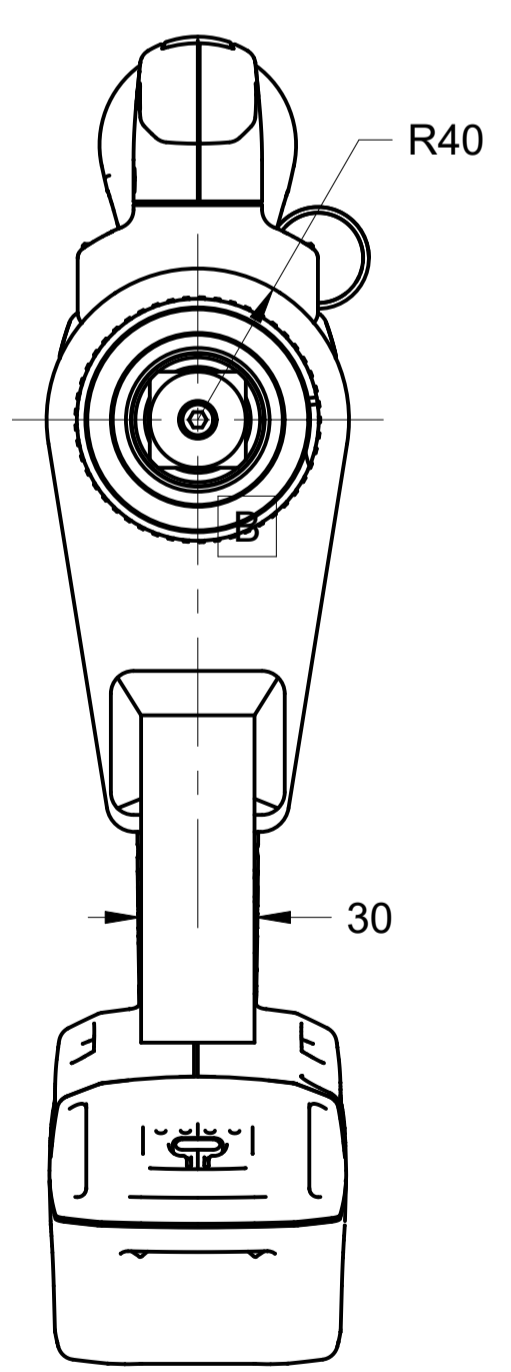
QX--5P-200PM12
QX 40V PISTOL, 200 NM, 3/4 IN. SQ.



QX--5P-10CPM12
QX 40V PISTOL, 1000 NM, 3/4 IN. SQ.



QX--5P-500PM12
QX 40V PISTOL, 500 NM, 3/4 IN. SQ.

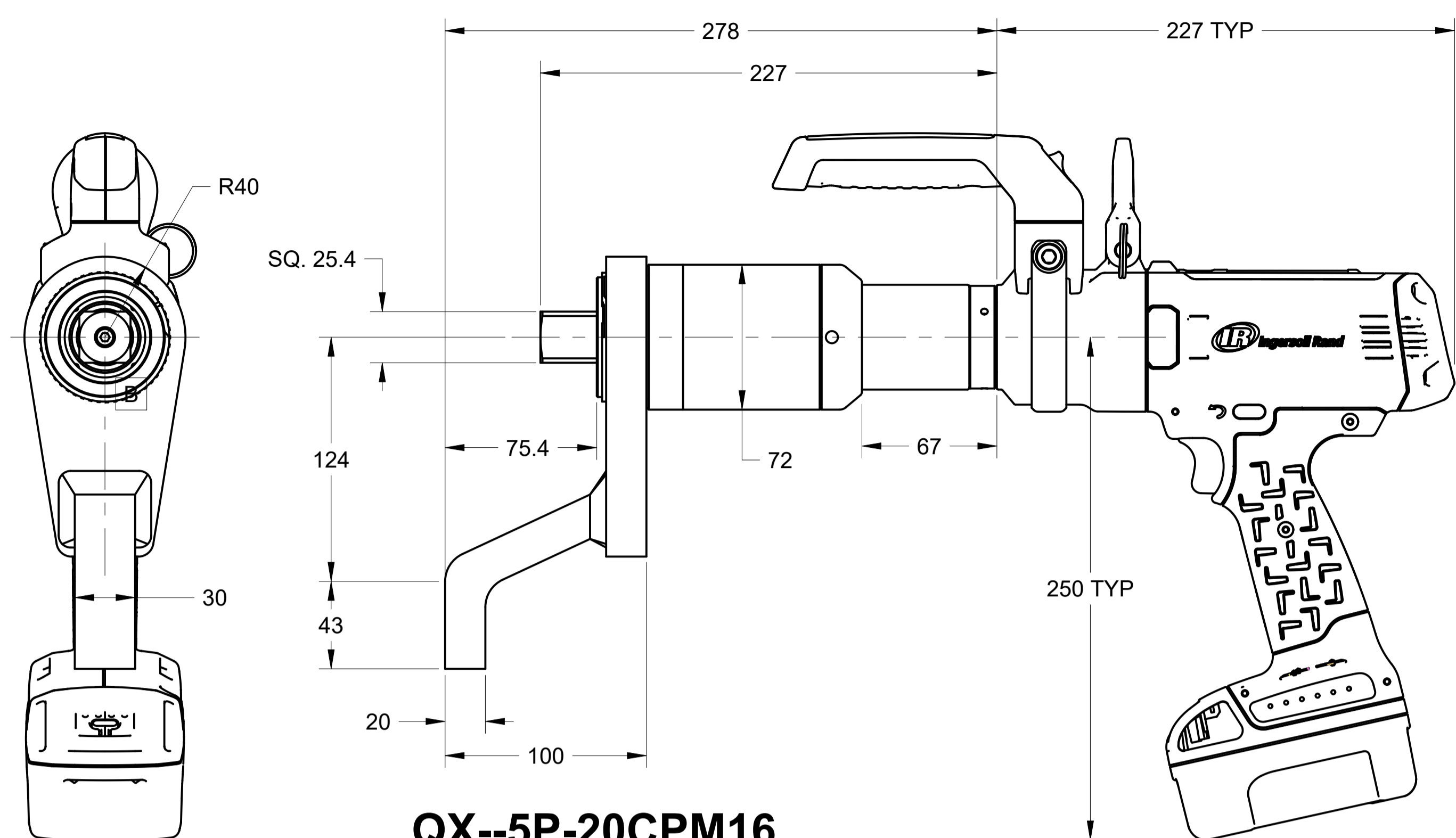


QX--5P-13CPM16
QX 40V PISTOL, 1350 NM, 1 IN. SQ.

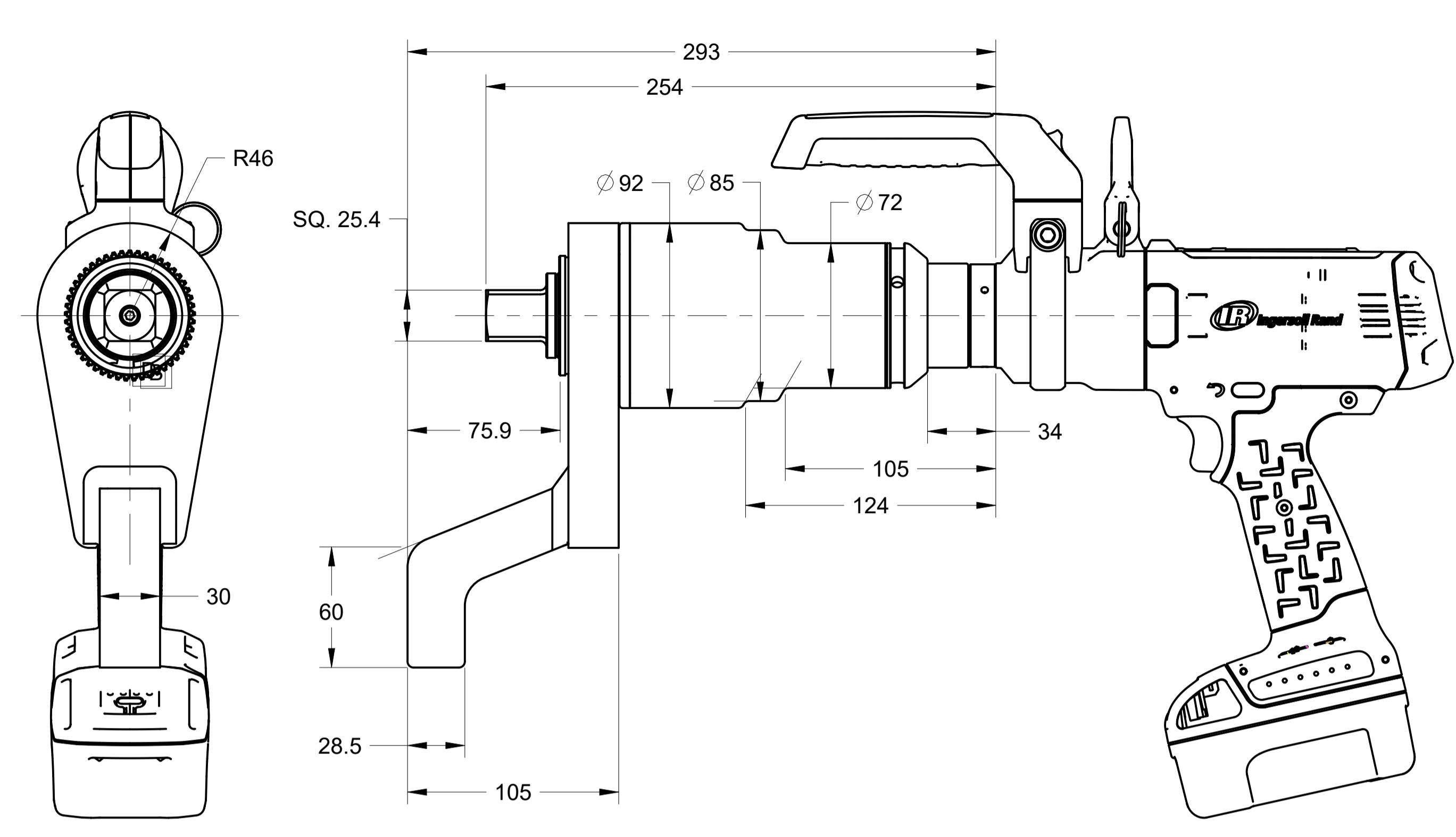
<small>PROPRIETARY NOTICE</small> <small>THIS DRAWING CONTAINS CONFIDENTIAL AND TRADE SECRET INFORMATION. IT IS THE PROPERTY OF INGERSOLL-RAND CO. AND IS GIVEN TO THE RECEIVER IN CONFIDENCE. THE RECEIVER BY RECEIPT AND RETENTION OF THIS DRAWING ACCEPTS THE DRAWING IN CONFIDENCE AND AGREES THAT, EXCEPT AS AUTHORIZED IN WRITING BY INGERSOLL-RAND CO., IT WILL (1) NOT USE THE DRAWING OR ANY COPY THEREOF OR THE CONFIDENTIAL OR TRADE SECRET INFORMATION THEREIN; (2) NOT COPY THE DRAWING; (3) NOT DISCLOSE TO OTHERS EITHER THE DRAWING OR THE CONFIDENTIAL OR TRADE SECRET INFORMATION THEREIN; AND (4) UPON COMPLETION OF THE NEED TO RETAIN THE DRAWING OR UPON DEMAND, RETURN THE DRAWING, ALL COPIES THEREOF, AND ALL MATERIAL COPIED THEREFROM.</small>		<small>NAME</small> QX 40V PISTOL FAMILY OUTLINE INFORMATION	
<small>SIZE</small> A1	<small>PART NO</small> TE-VP2-OUTLINE	<small>REVISION</small> A	
<small>SCALE</small> 0.50	<small>NOMENCLATURE</small> TE-VP2-OUTLINE	<small>SHEET</small> 2 of 3	

8 7 6 5 4 3 2 1

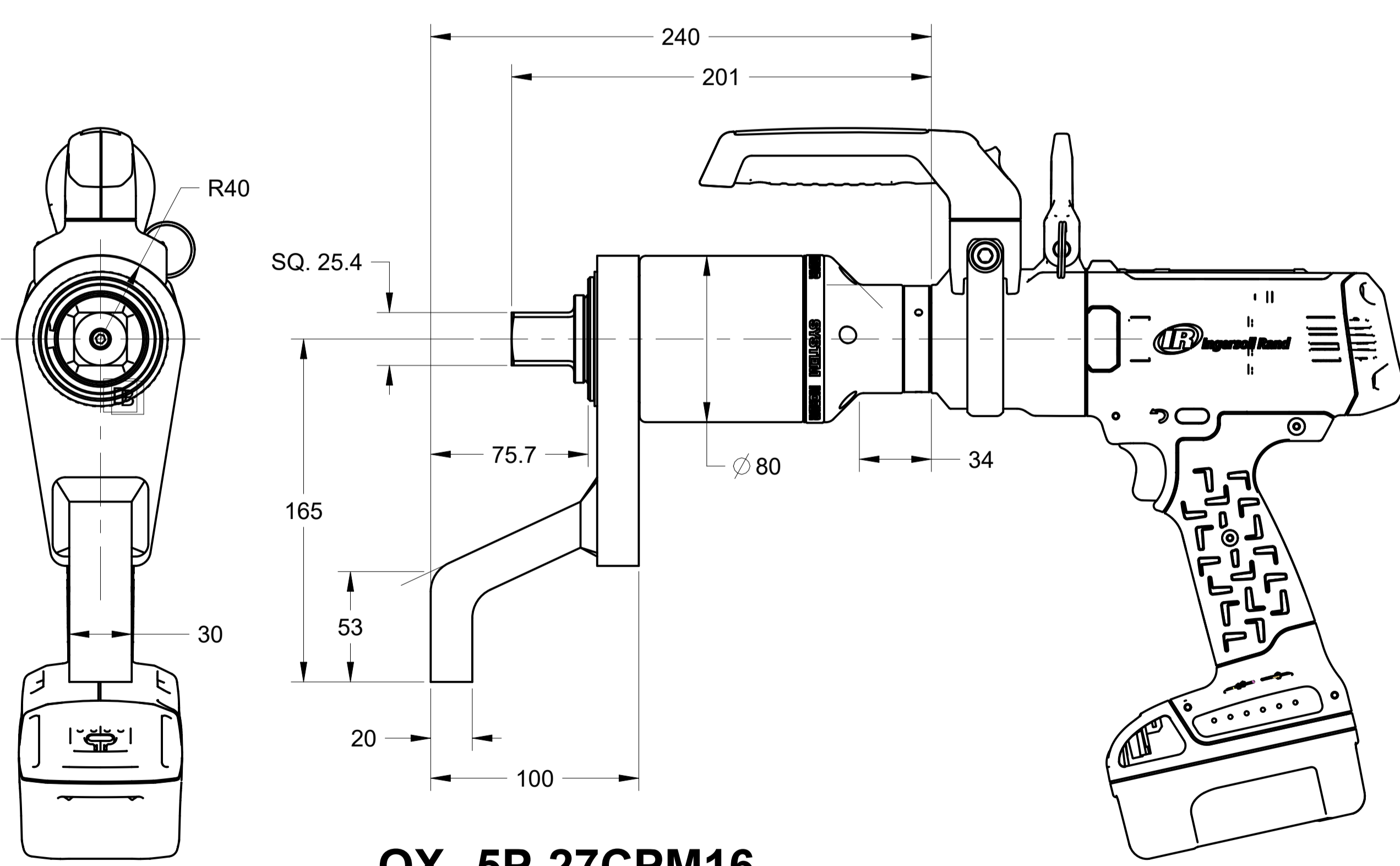
8 7 6 5 4 3 2 1



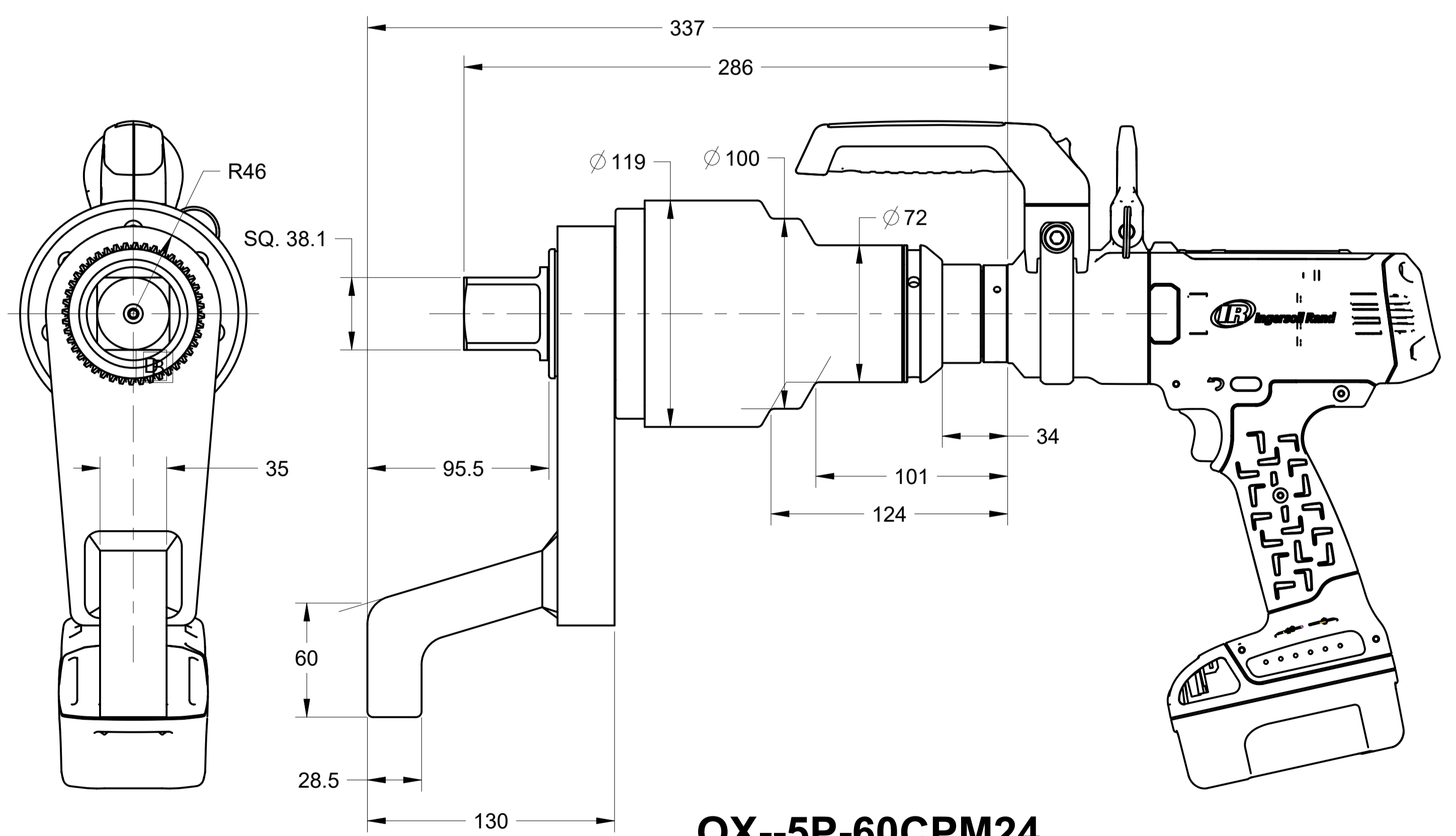
QX--5P-20CPM16
QX 40V PISTOL, 2000 NM, 1 IN. SQ.



QX--5P-40CPM16 & QX--5P-48CPM16
QX 40V PISTOL, 4000 & 4800 NM, 1 IN. SQ.



QX--5P-27CPM16
QX 40V PISTOL, 2700 NM, 1 IN. SQ.



QX--5P-60CPM24
QX 40V PISTOL, 6000NM, 1-1/2 IN. SQ.

<small>PROPRIETARY NOTICE</small> <small>THIS DRAWING CONTAINS CONFIDENTIAL AND TRADE SECRET INFORMATION IS THE PROPERTY OF INGERSOLL-RAND CO. AND IS GIVEN TO THE RECEIVER IN CONFIDENCE. THE RECEIVER BY RECEIPTING AND RETENTION OF THE DRAWING ACCEPTS THE DRAWING IN CONFIDENCE AND AGREES THAT, EXCEPT AS AUTHORIZED IN WRITING BY INGERSOLL-RAND CO. IT WILL (1) NOT USE THE DRAWING OR ANY COPY THEREOF OR THE CONFIDENTIAL OR TRADE SECRET INFORMATION THEREIN; (2) NOT COPY THE DRAWING; (3) NOT DISCLOSE TO OTHERS EITHER THE DRAWING OR THE CONFIDENTIAL OR TRADE SECRET INFORMATION THEREIN; AND (4) UPON COMPLETION OF THE NEED TO RETAIN THE DRAWING OR UPON DEMAND, RETURN THE DRAWING, ALL COPIES THEREOF, AND ALL MATERIAL COPIED THEREFROM.</small>		<small>NAME</small> QX 40V PISTOL FAMILY OUTLINE INFORMATION	
<small>SIZE</small> A1	<small>PART NO</small> TE-VP2-OUTLINE	<small>REVISION</small> A	
<small>SCALE</small> 0.50	<small>NOMENCLATURE</small> TE-VP2-OUTLINE	<small>SHEET</small> 3 of 3	