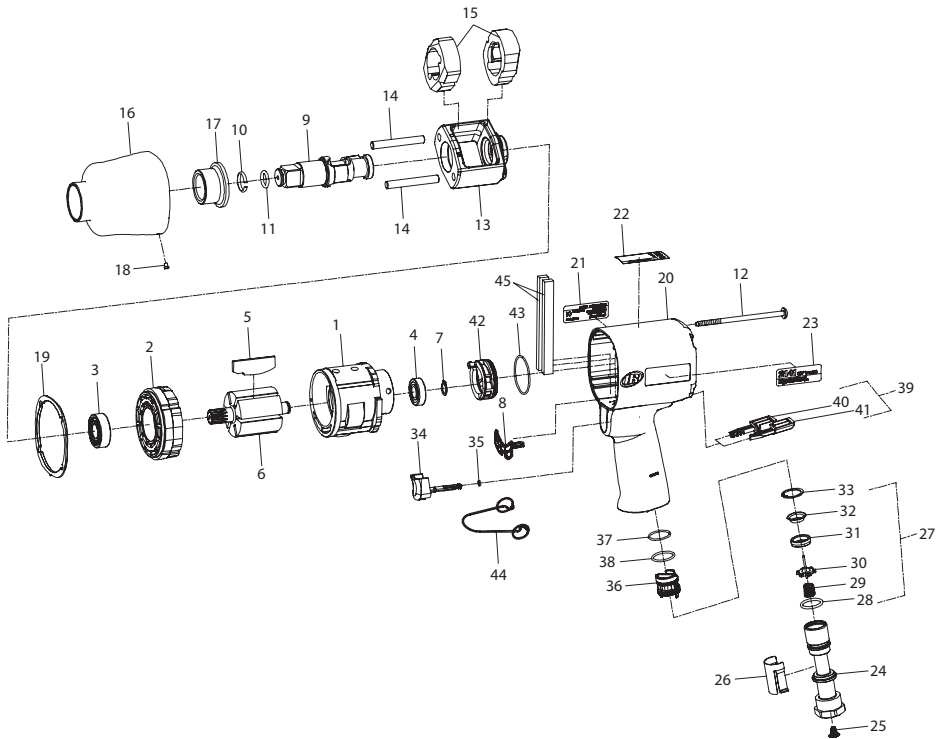


2141 and 2141S Air Impact Wrench - Exploded View



(Dwg. TPA1796)

2141 and 2141S Air Impact Wrench - Parts List

Item	Part Description	Part Number	Item	Part Description	Part Number
1	Cylinder	2141-3		Inlet Bushing Assembly	2141-D565
2	Front End Plate	2141-11	24	Inlet Bushing	2141-565
3	Front Rotor Bearing	R38P-606	25	Inlet Bushing Screen	5RA-61
4	Rear Rotor Bearing	2131-97	26	Inlet Retainer Clip	2141-57
• 5	Vane Packet (set of 6 Vanes)	2141-42-6	27	Inlet Parts Kit	2141-K303
6	Rotor	2141-53	28	Inlet Bushing Seal	R4-210
7	Rear Rotor Bearing Retainer	2131-6	29	Tilt Valve Spring	2131-51
• 8	Motor Gasket	2141-283	30	Tilt Valve	2141-302
9	Anvil Assembly	2141-A626	31	Tilt Valve Seat	2141-303
• 10	Socket Retainer	908B5-918	32	Tilt Valve Seat Support	2141-306
• 11	Socket Retainer O-ring	AF120-289	33	Tilt Valve Seat Retainer	SML8-24
12	Hammer Case Screw (4)	2141-638	• 34	Trigger Assembly	2141-A93
	Hammer Frame Assembly	2141-A703	35	Trigger O-ring	---
13	Hammer Frame	2141-703	36	Reverse Valve Assembly	2141-A329
14	Hammer Pin (2)	2141-704	37	Reverse Valve O-ring (top)	---
15	Hammer (2)	2141-724	38	Reverse Valve O-ring (bottom) (blue)	---
16	Hammer Case Assembly	2141-727	39	Button Kit	2141-K75
17	Hammer Case Bushing	2141-641	40	Forward Button	---
18	Grease Fitting	D0F9-879	41	Reverse Button	---
• 19	Hammer Case Gasket	2141-36	42	Power Management Dial	2131-A249
20	Housing Assembly	2141-A40	43	Power Management Dial Seal	---
21	Housing Label	2141-300	44	Inlet Clip Removal Tool	2131-322
22	Warning Label	WARNING-2-99	45	Silencer (4) (2141S only)	2131S-310
23	Nameplate		*	Grease (1 lb) (for external lubrication of the impact mechanism)	115-1LB
	for 2141	2141-301		* Grease (for lubrication when disassembling and assembling the impact mechanism)	
for 2141S	2141S-301	1 lb	105-1LB		
			8 lb		105-8LB
			*	Protective Cover	2141-P32
			*	Grease Gun	R000A2-228

* Not illustrated.

- To keep downtime to a minimum, it is desirable to have on hand certain repair parts. We recommend that you stock one (pair or set) of each part indicated by a Bullet (•) for every four tools in service.

Parts and Maintenance

When the life of the tool has expired, it is recommended that the tool be disassembled, degreased and parts be separated by material so that they can be recycled.

Tool repair and maintenance should only be carried out by an authorized Service Center.

Refer all communications to the nearest **Ingersoll Rand** Office or Distributor.

Related Documentation

For additional information refer to:

Air Impact Wrenches Product Safety Information Manual Form 04580916,

Air Impact Wrenches Product Information Manual Form 04584710,

Air Impact Wrenches Maintenance Information Manual Form 04583993.

Manuals can be downloaded from ingersollrandproducts.com.

