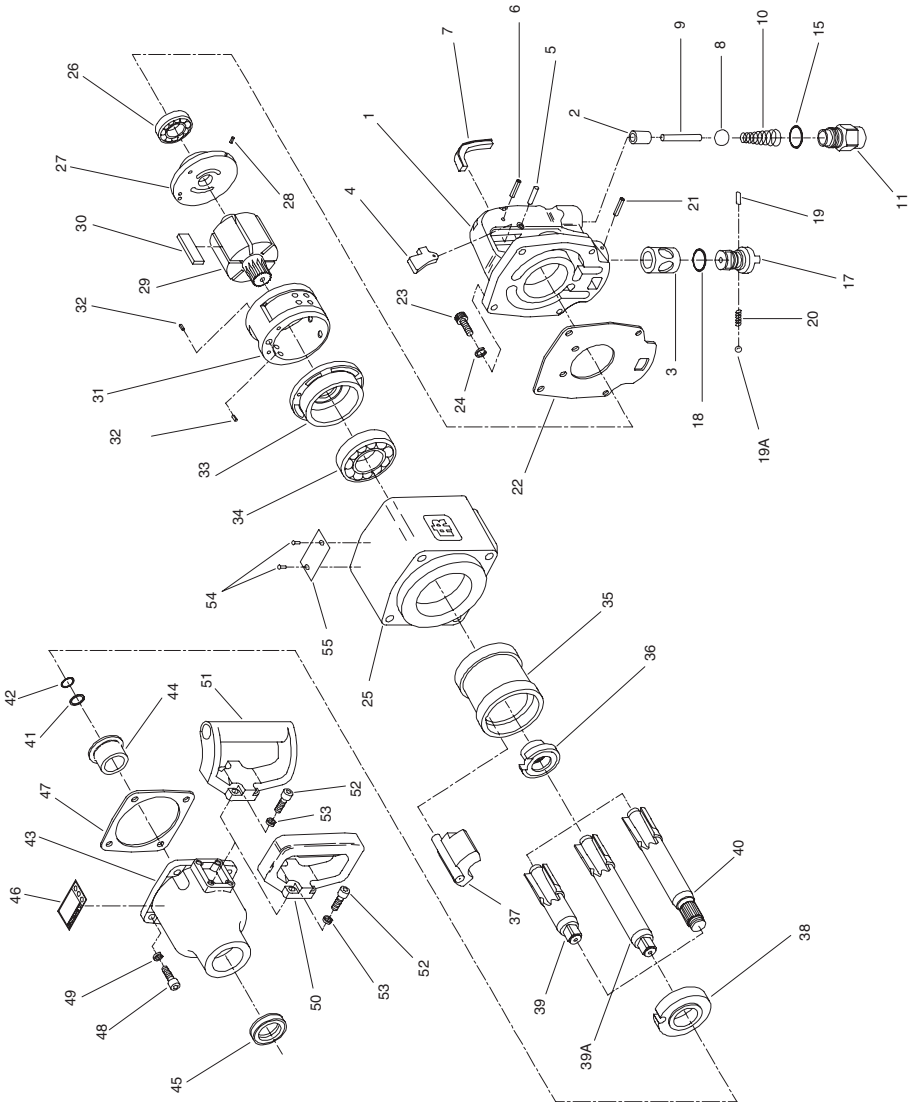


285A, 285A-6, 285A-S-6 Air Impact Wrench Exploded Diagram



(Dwg. TPA1716)

---

**285A, 285A-6, 285A-S-6 Air Impact Wrench**

Item	Part Description	Part Number	Item	Part Description	Part Number
1	Trigger Handle Assembly	285-A92A	33	Front End Plate	291-11
2	Plunger Bushing	291-303	34	Front Rotor Bearing	58-96
3	Reverse Valve Bushing	285-330A	35	Hammer Frame	285-703
4	Trigger	285-93A	36	Hammer Cam	285-721
5	Spring Pin	281-437	37	Hammer	285-724
6	Stop Pin	281-439	38	Side Plate	285-706
7	Slot Cover	281-438		1" Square Drive Anvil Assembly	
8	Throttle Valve	285-50	39	Standard Length	285-A726
9	Throttle Valve Plunger	285-302	39A	6" Extended Length	285-A726-6
10	Throttle Valve Spring	291-51	40	Spline Drive Anvil Assembly (6" Extended length)	285-A514-6
11	Inlet Bushing	291-A565	41	Retainer Ring	291-425
15	O-Ring	291-566	42	Retainer O-Ring	291-426
17	Reverse Valve Assembly	285-A329	43	Hammer Case Assembly	285-A727
18	Reverse Valve Seal	291-338	44	Hammer Case Bushing	291-641
19	Stop Pin	291-332	45	Oil Seal	291-642
19A	Ball	291-333	46	Warning Label	WARNING-27-99
20	Spring	291-334	47	Hammer Case Gasket	285-36
21	Spring Pin	281-120	48	Hammer Case Cap Screw (4)	291-105
22	Handle Gasket	285-283	49	Hammer Case Cap Screw	
23	Handle Cap Screw (4)	281-638		Lockwasher (4)	291-104
24	Handle Cap Screw		50	Dead Handle (for 285A)	291-48
	Lockwasher (4)	291-104	51	Dead Handle (for 285A-6 and 285A-S-6)	281-48-6
25	Motor Housing	285-40	52	Dead Handle Cap Screw (4)	291-49
26	Rear Rotor Bearing	291-24	53	Dead Handle Cap Screw Lockwasher (4)	291-504
27	Rear End Plate Assembly	291-A12	54	Nameplate Screw (2)	222-302
28	Pin	291-10	55	Nameplate	
29	Rotor	285-53		for 285A	285A-301
30	Vane Packet (set of 6 vanes)	291-42-6		for 285A-S-6	285A-S-6-301
31	Cylinder Assembly	285-A3		for 285A-6	285A-6-301
32	Cylinder Dowel (2)	291-98			

---

**Parts and Maintenance**

When the life of the tool has expired, it is recommended that the tool be disassembled, degreased and parts be separated by material so that they can be recycled.

Tool repair and maintenance should only be carried out by an authorized Service Center. Refer all communications to the nearest **Ingersoll-Rand** Office or Distributor.

---

**Related Documentation**

For additional information refer to:  
Air Impact Wrench Product Safety Information Manual 04580916,  
Air Impact Wrench Product Information Manual 04584850.

Manuals can be downloaded from [www.irtools.com](http://www.irtools.com).