

Parts for Motor Case

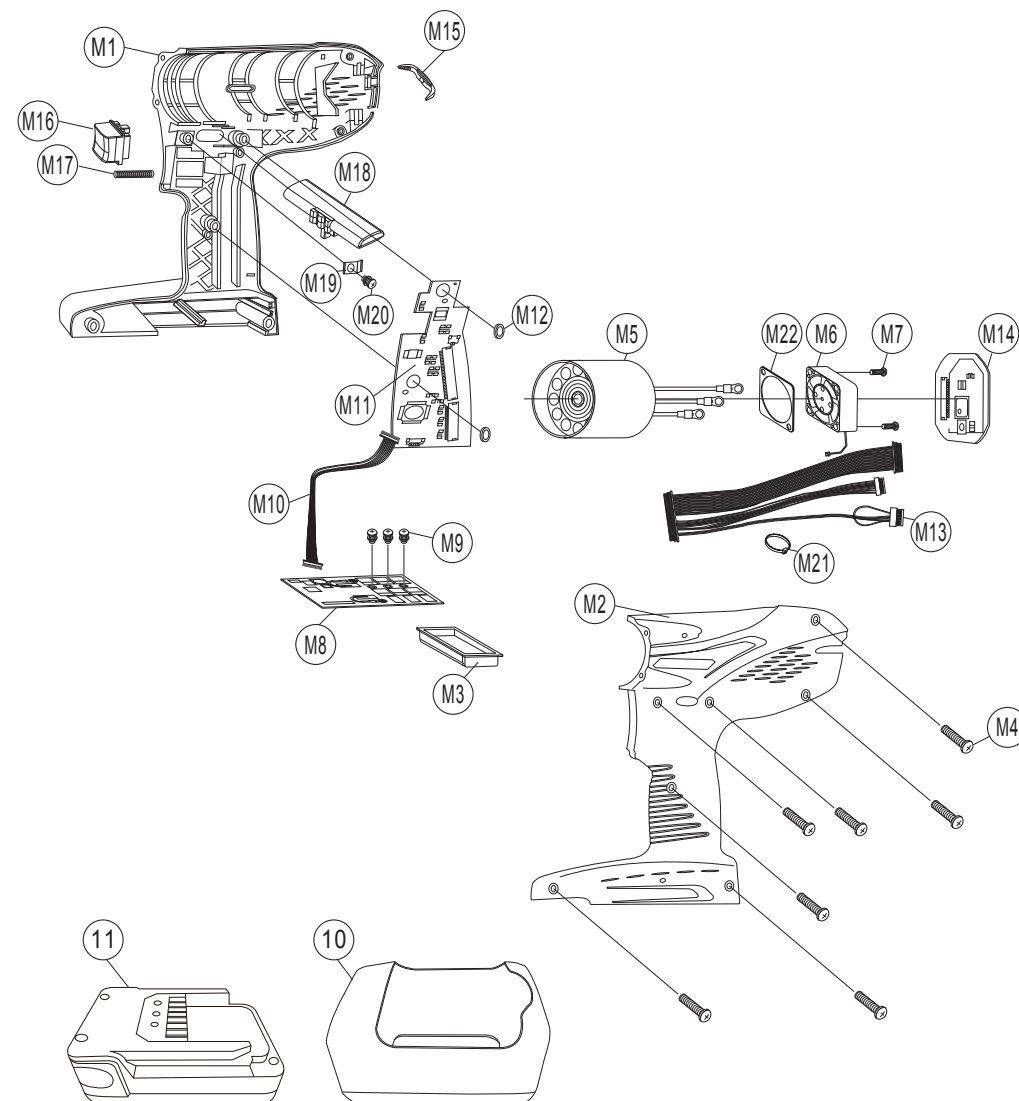
| No. | Name of parts | Per set | parts No. |
|----------------------|---|---------|-----------------|
| M | Motor Case Assy. | 1Set | 0444 0011 01 99 |
| M1 | Motor Case (A) | 1 | 0444 0011 01 01 |
| M2 | Motor Case (B) | 1 | 0444 0011 01 02 |
| M3 | Motor Case (C) | 1 | 0446 0011 00 03 |
| M4 | Tapping Screw M3x16 | 7 | 9540 1018 00 00 |
| M5 | Motor Assy. | 1Set | 0444 0330 00 99 |
| M6 | Fan D03X-05TM11(CX) | 1 | 0446 1556 00 00 |
| M7 | Cross Recessed Screw M3×15 | 2 | 9410 2047 00 00 |
| M8 | Power Circuit Board Assy. | 1Set | 0446 0195 00 99 |
| M9 | Head Screw | 3 | 9410 4002 00 00 |
| M10 | Harness (A) | 1 | 0446 0208 00 01 |
| M11 | Controll Circuit Board Assy. | 1Set | 0444 1608 07 99 |
| M12 | O-Ring (S6) | 2 | 9010 4026 00 00 |
| M13 | Harness (B) | 1 | 0446 0208 00 02 |
| M14 | Wireless Circuit Board Assy. | 1Set | 0446 1533 01 99 |
| M15 | Lamp Holder | 1 | 0446 0959 01 00 |
| M16 | Throttle Knob Assy. | 1Set | 0446 0153 00 99 |
| M17 | Spring 7.5×27 | 1 | 8020 1428 00 00 |
| M18 | Reverse Lever Assy. | 1Set | 0446 0007 00 99 |
| M19 | Reverse Lever Spring | 1 | 0446 1615 00 00 |
| M20 | Tapping Screw M2.6x5 | 1 | 9540 1019 00 00 |
| M21 | Binding Band (CV-70N) | 5 | 9790 1008 00 00 |
| M22 | Rubber Packing | 1 | 0446 0359 00 00 |
| Optional Accessories | | | |
| 10 | Protector (for BPL-1820) | 1 | 0446 0029 00 01 |
| 11 | Battery Pack BPL-1820 | 1 | 0446 1521 00 00 |
| | Battery Charger BC0075G | 1 | 0446 1606 00 00 |
| | Power Cord 1.5M (Domestic) | 1 | 8521 0008 00 00 |
| | Power Cord 1.5M (R. Pin for Europe) | 1 | 8521 0009 00 00 |
| | Power Cord 1.5M <VM0718-VM0719> for China | 1 | 8521 0029 00 00 |
| | Power Cord 1.5M <VM0228A-VM0296> for US | 1 | 8521 0032 00 00 |
| | Power Cord 1.5M <VM0773-VM0776> for India | 1 | 8521 0033 00 00 |
| | Hanger | 1 | 0446 0017 00 00 |
| | Hanger Clip | 1 | 0446 1801 00 00 |



Battery System Wrench with built-in angle sensor

| MODELS (YES.No.) | TOOL No. | MODELS (YES.No.) | TOOL No. |
|------------------|----------------|------------------|----------------|
| YS-e600 (01) | 0444 0000 0100 | YS-e600A (01) | 0444 0000 0101 |

Exploded View of Motor Case



YOKOTA INDUSTRIAL CO.,LTD.

Parts for Liner Case

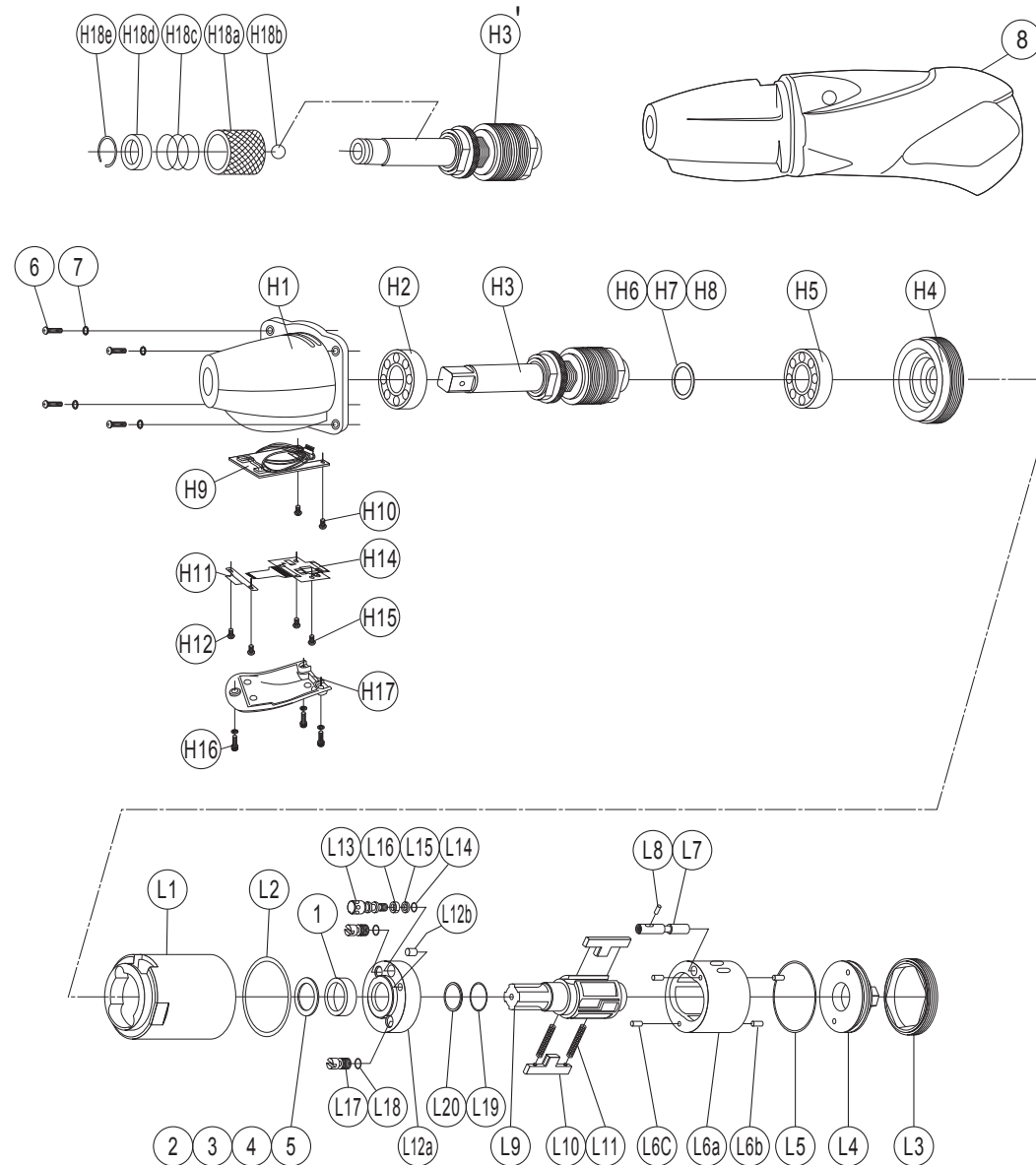
| No. | Name of parts | Per set | parts No. |
|-----|-------------------------|---------|-----------------|
| L | Liner Case Assy. | 1Set | 0444 0422 00 99 |
| L1 | Liner Case | 1 | 0444 0422 00 00 |
| L2 | O-Ring 1.78×29.87×33.43 | 1 | 9011 2003 00 00 |
| L3 | Liner Cap | 1 | 0186 0423 00 00 |
| L4 | Liner Upper Plate | 1 | 0186 0424 00 00 |
| L5 | O-Ring 1.78×26.7×30.26 | 1 | 9011 6064 00 00 |
| L6 | Liner Assy. | 1Set | 0444 0425 00 99 |
| | (a)Liner | 1 | ※ ↑ |
| | (b)Pin FF 2×4.8 | 2 | 8052 1041 00 00 |
| | (c)Pin 2×3.5 | 2 | 8052 1028 00 00 |
| L7 | Relief Valve | 1 | 0444 0245 00 00 |
| L8 | Pin 1.5×4 | 1 | 8051 1314 00 00 |
| L9 | Liner Shaft | 1 | 0444 0796 00 00 |
| L10 | Blade | 2 | 0371 0719 00 00 |
| L11 | Spring 3.1×20 | 2 | 8020 1296 00 00 |
| L12 | Liner Lower Plate Assy. | 1Set | 0186 0426 00 99 |
| | (a)Liner Lower Plate | 1 | ※ ↑ |
| | (b)Pin 3×5 | 1 | 8052 1031 00 00 |
| L13 | Adjust Bolt | 1 | 0444 0522 00 00 |
| L14 | O-Ring N2 | 1 | 9010 4001 00 00 |
| L15 | Back-up Ring N2 | 1 | 9090 2001 00 00 |
| L16 | Nylon Bushing | 1 | 0181 0431 00 00 |
| L17 | Oil Plug | 2 | 0181 0010 00 00 |
| L18 | O-Ring N2 | 2 | 9010 4001 00 00 |
| L19 | O-Ring P12 | 1 | 9011 7001 00 00 |
| L20 | Back-up Ring 12×16×0.8 | 1 | 9090 1010 00 00 |
| 1 | Washer 12×15.8×4.8 | 1 | 8040 1165 00 00 |
| ★2 | Washer 11.5×16×0.2 | 1 | 8041 5046 00 00 |
| ★3 | Washer 11.5×16×0.3 | 1 | 8041 5026 00 00 |
| ★4 | Washer 11.5×16×0.4 | 1 | 8041 5065 00 00 |
| ★5 | Washer 11.5×16×0.5 | 1 | 8041 5022 00 00 |

The part "※" can not be supplied individually.
So please order it as a unit of assembly shown by
arrow mark (↑).
☆marked parts ; one of them is used.

Battery System Wrench with built-in angle sensor

| MODELS (YES.No.) | TOOL No. | MODELS (YES.No.) | TOOL No. |
|------------------|----------------|------------------|----------------|
| YS-e600 (01) | 0444 0000 0100 | YS-e600A (01) | 0444 0000 0101 |

Exploded View of Liner Case & Hammer Case



Parts for Hammer Case

| No. | Name of parts | Per set | parts No. |
|----------------------|----------------------------|---------|-----------------|
| H | Hammer Case Assy. | 1Set | 0444 0401 01 99 |
| H1 | Hammer Case | 1 | 0444 0401 00 00 |
| H2 | Ball Bearing 6801ZZ | 1 | 9100 5028 00 00 |
| H3 | Main Shaft Assy. | 1Set | 0444 0614 00 99 |
| H4 | Bearing Case | 1 | 0446 0650 00 00 |
| H5 | Ball Bearing 6802ZZ | 1 | 9100 5037 00 00 |
| ★H6 | ST-Packing 20×23.6×0.2 | 1 | 8011 1167 00 00 |
| ★H7 | ST-Packing 20×23.6×0.3 | 1 | 8011 1168 00 00 |
| ★H8 | ST-Packing 20×23.6×0.4 | 1 | 8011 1169 00 00 |
| H9 | Wire Circuit Board | 1 | 0446 1611 00 00 |
| H10 | Screw M3x8 | 2 | 9440 2029 00 00 |
| H11 | Sensor Base Assy. | 1Set | 0446 0345 01 99 |
| H12 | Wire Circuit Board | 2 | 9440 2029 00 00 |
| ★H13 | ST-Packing 3.4×6.1×0.1 | 2 | 8011 1166 00 00 |
| H14 | Torque Circuit Board Assy. | 1Set | 0446 1607 04 99 |
| H15 | Screw M3x6 P=0.5 | 2 | 9400 2014 00 00 |
| H16 | Cover Plate | 1 | 0444 0014 00 00 |
| H17 | Screw M3x10 | 3 | 9440 2013 00 00 |
| 6 | Hexagon Socket Bolt M4×14 | 4 | 8070 3008 00 00 |
| 7 | Spring Washer M4 | 4 | 9200 3012 00 00 |
| Optional Accessories | | | |
| 8 | Protector | 1 | 0444 0029 01 00 |
| | TF Pin | 1 | 8051 6001 00 00 |
| Parts for YS-e600A | | | |
| H' | Hammer Case <A-Type> | 1Set | 0444 0401 01 98 |
| H3' | Main Shaft Assy. <A-Type> | 1Set | 0444 0614 00 98 |
| H18 | Bit Chuck Assy. | 1Set | 2057 0414 00 99 |
| | Bit Chuck | 1 | 2057 0414 00 00 |
| | Ball 1/8 | 1 | 9150 3009 00 00 |
| | Spring 13.5×10 | 1 | 8020 1340 00 00 |
| | Spring Washer | 1 | 2331 0419 00 00 |
| | Retaining Ring 10×1 | 1 | 8030 1009 00 00 |

The part "※" can not be supplied individually.
So please order it as a unit of assembly shown by
arrow mark (↑).
☆marked parts ; one of them is used.