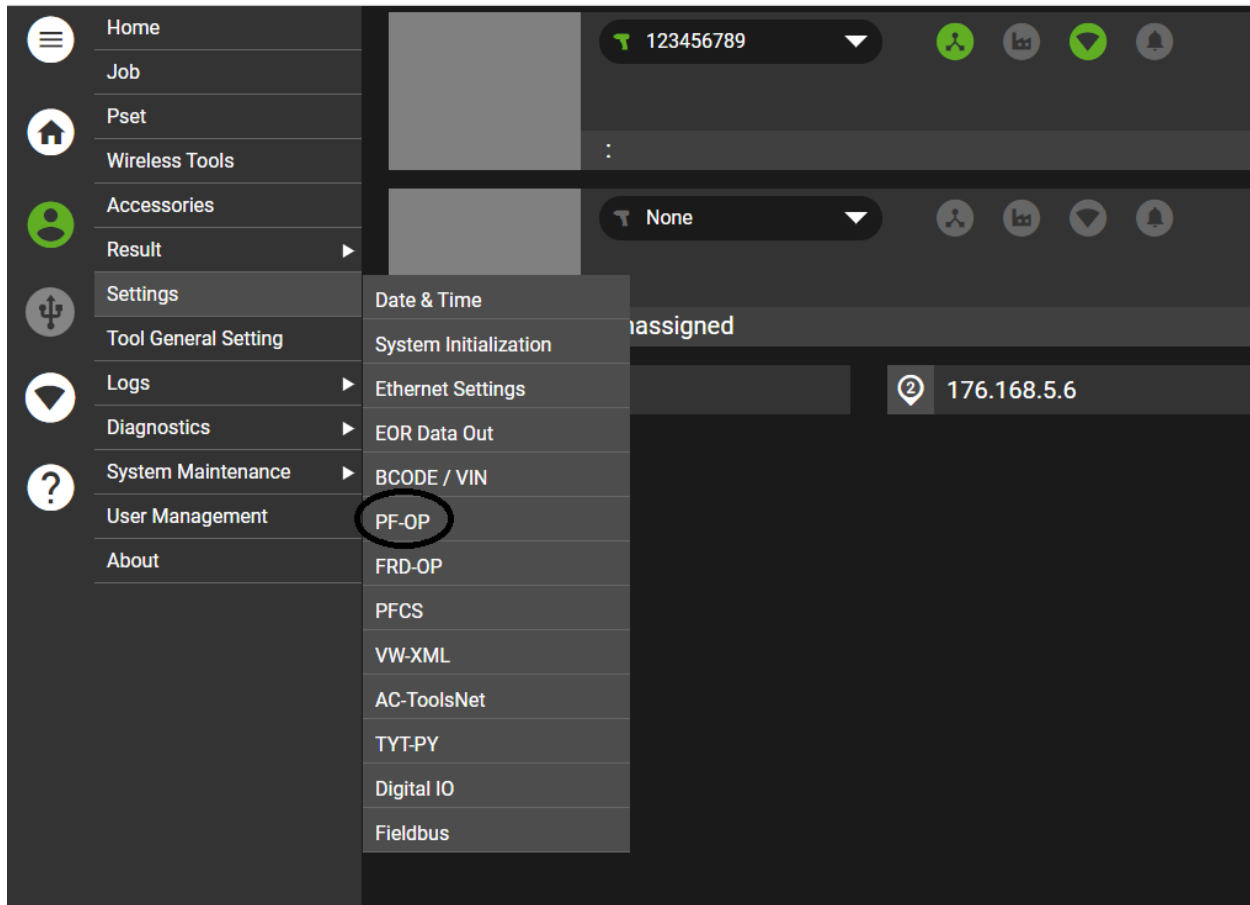
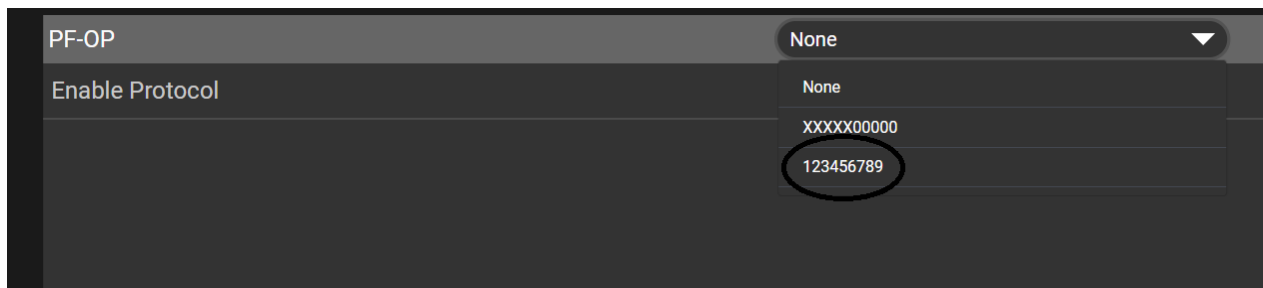


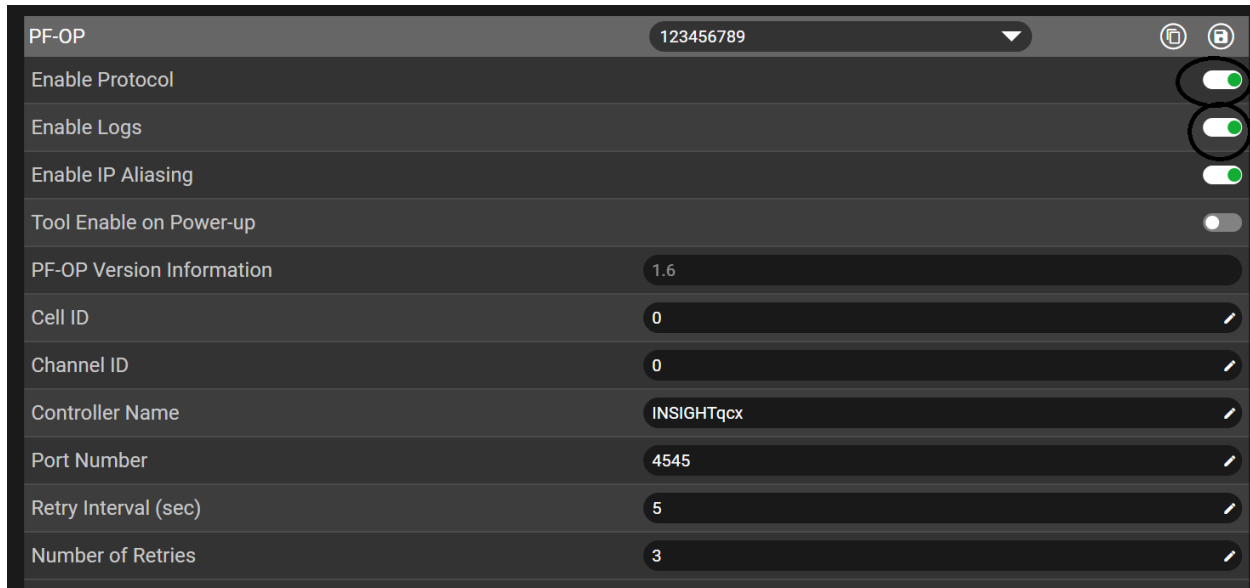
1. From the Main Menu, go to Settings->PF-OP



2. Select which tool you want to edit the Open Protocol Settings



3. Enable Open Protocol and Enable Logs

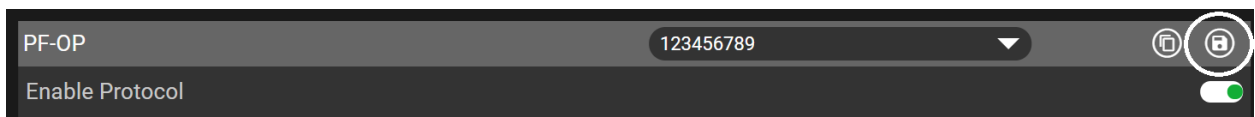


4. With IP Aliasing enabled, the controller will communicate with the Unique Tool IP Address and user given PF-OP Port number

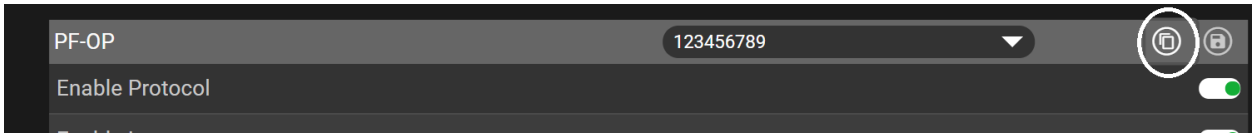
**Note:** To assign the tool IP Address, see Step 9.

5. If IP Aliasing is disabled, the controller will communicate using the controller IP Address (Port0) and user given PF-OP Port number
6. The following Open Protocol parameters are user defined
  - a. **Tool Enable on Power-up:** If Tool Enable on Power-up is enabled, then the controller will unselect the current job and send the tool enable command to the tool at startup. If the PFOP connection is lost, then controller will send the tool enable Command to the tool, but the job selection will remain unchanged.
  - b. **Cell ID:** Four digit numeric station or cell ID the controller is configured for (Default 0).
  - c. **Channel ID:** Two digit numeric channel ID. Default is 0 (represented by space " " in the header).
  - d. **Controller name:** Plain ASCII text name that uniquely identifies the controller (Default INSIGHTqcx).
  - e. **Port Number:** Assigned TCP port number (Default 4545).
  - f. **Retry Interval (sec):** The amount of time to wait for message acknowledgement before sending the message again (Default 5 sec).
  - g. **Number of Retries:** Maximum number of times to retry sending a message before declaring that the communication is lost (Default 3).

7. Click on the Save Icon in the header to save the PF-OP settings

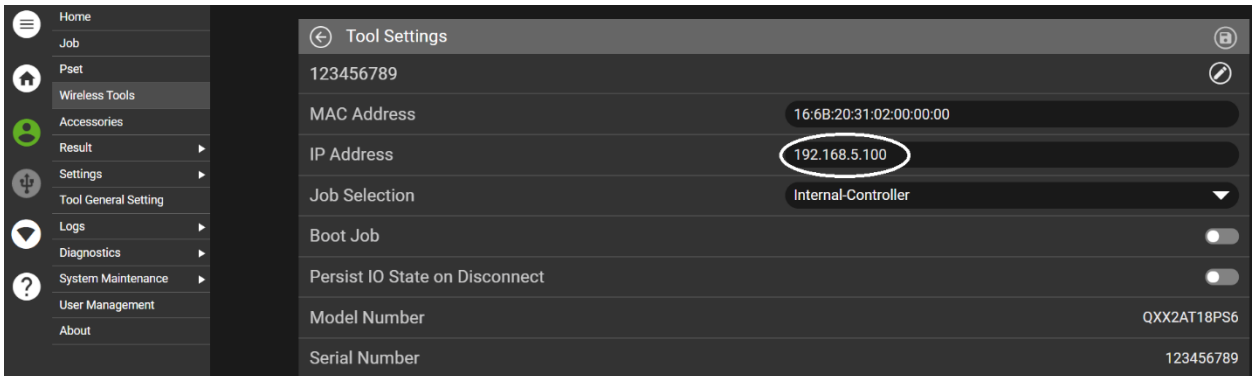


8. Click on the Copy Icon in the header to copy PF-OP settings from one tool to another

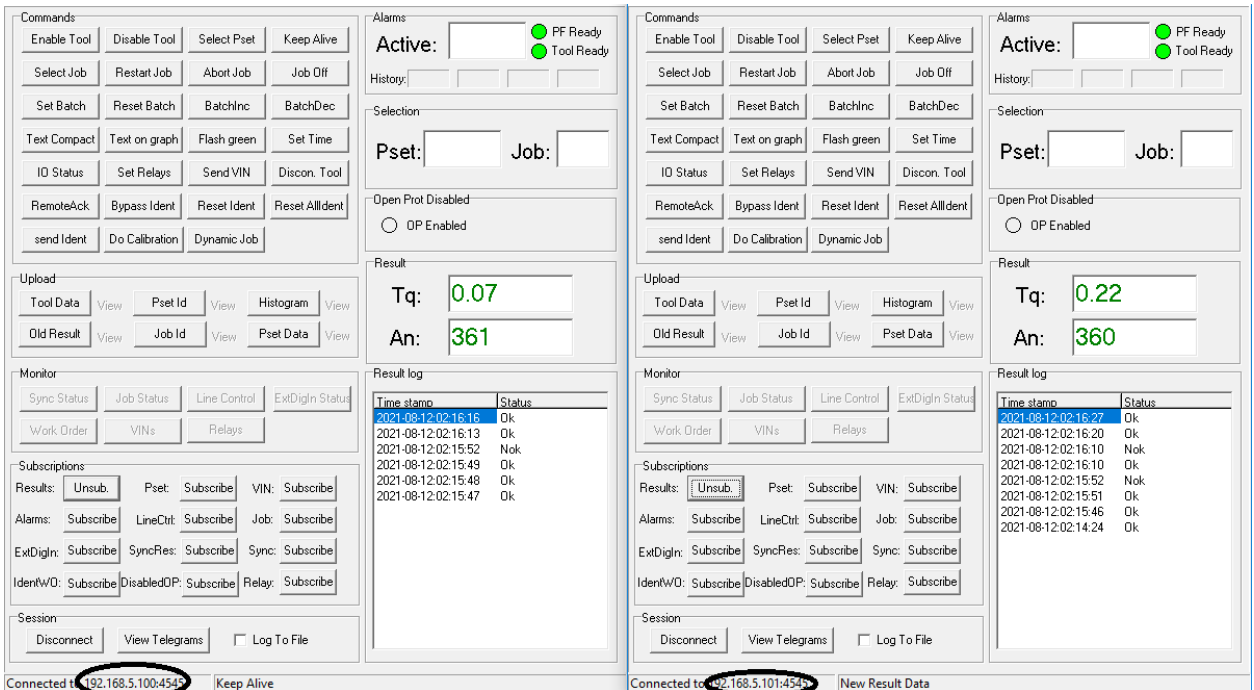


9. To assign the tool IP Address go to Wireless Tools->Tools Settings screen.

**Note:** The tool IP Address has to be in the same subnet as the IP Address of the first Ethernet port (Port 0).



10. Sample results using IP Aliasing. Note: Unique IP Addresses assigned to each tool



11. Sample results with IP Aliasing disabled. Note: Unique port numbers assigned to each tool

The image displays two side-by-side screenshots of a control panel interface, likely for a diagnostic tool. Both screenshots show a similar layout with various control buttons, status indicators, and data displays.

**Left Screenshot:**

- Alarms:** Active:  PF Ready  Tool Ready
- Result:** Tq: 0.09, An: 361
- Result log:**

Time stamp	Status
2021-08-12-02-32-04	Ok
2021-08-12-02-32-03	Ok
2021-08-12-02-32-02	Ok
- Status Bar:** Connected to 192.168.5.54545 | New Result Data

**Right Screenshot:**

- Alarms:** Active:  PF Ready  Tool Ready
- Result:** Tq: 0.18, An: 360
- Result log:**

Time stamp	Status
2021-08-12-02-32-00	Ok
2021-08-12-02-31-59	Ok
2021-08-12-02-31-58	Ok
- Status Bar:** Connected to 192.168.5.54546 | New Result Data