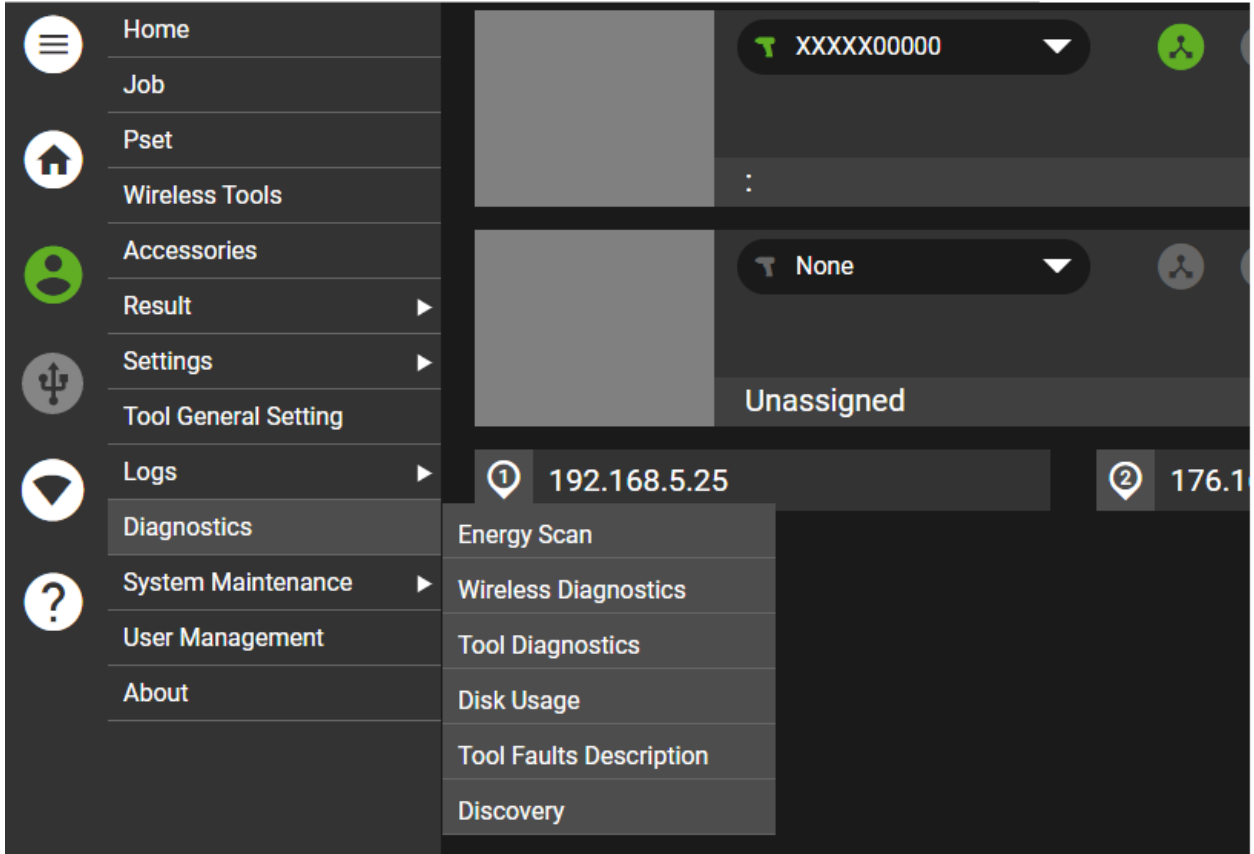


Pairing QX Tools with an MTC controller

1. Power on the controller.
2. The default channel of 14 and power level 1 is not adequate for many assembly environments.
3. We suggest to first run an Energy Scan to select the best Channel.
 - a. Go to Diagnostics->Energy Scan. Select the duration and run the test.



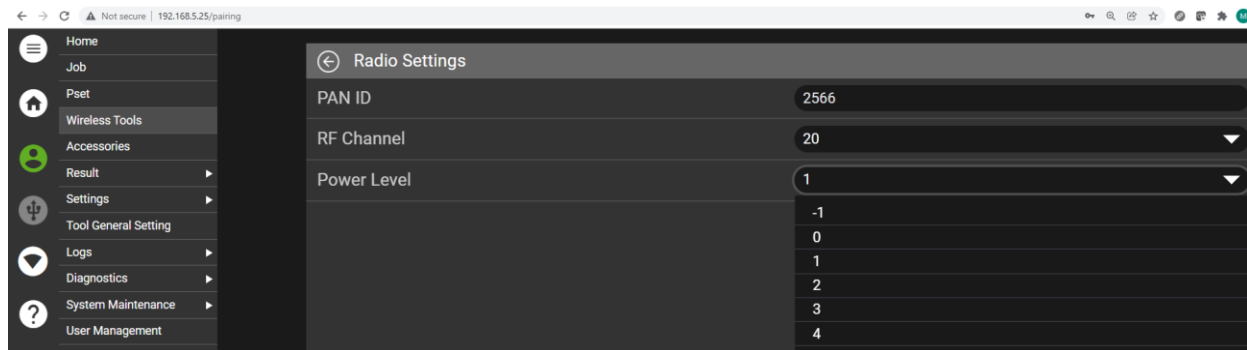
- b. Choose the channel with the least Average Traffic. You will see the following message. Select Yes.



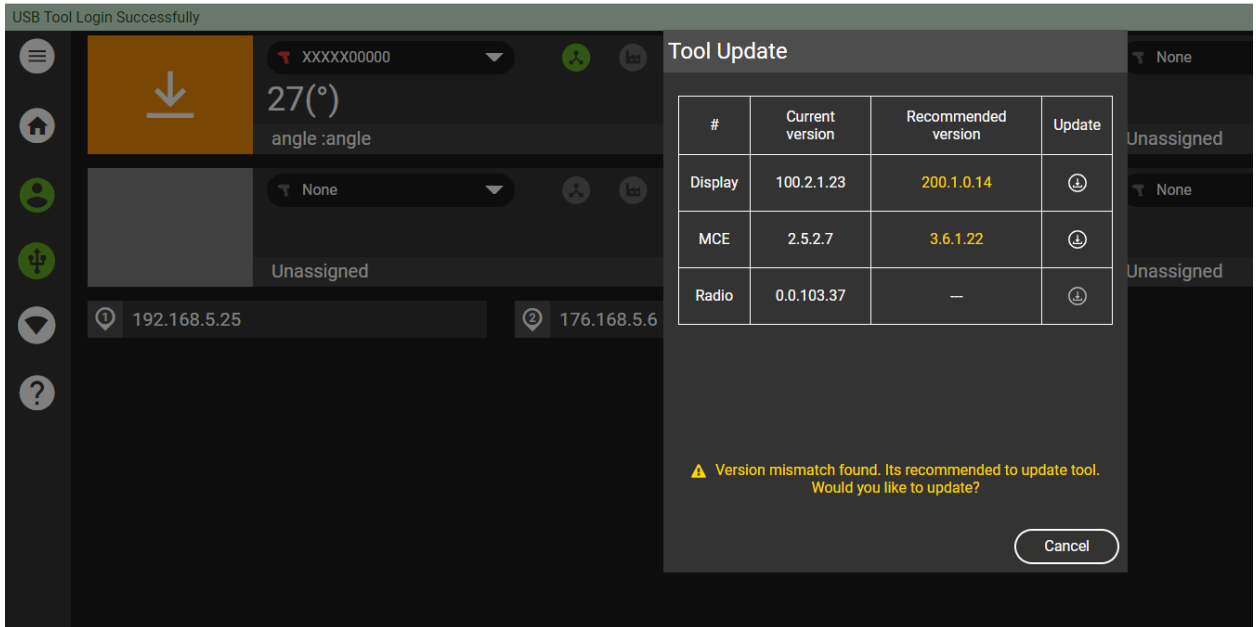
- c. Go to Wireless Tools.



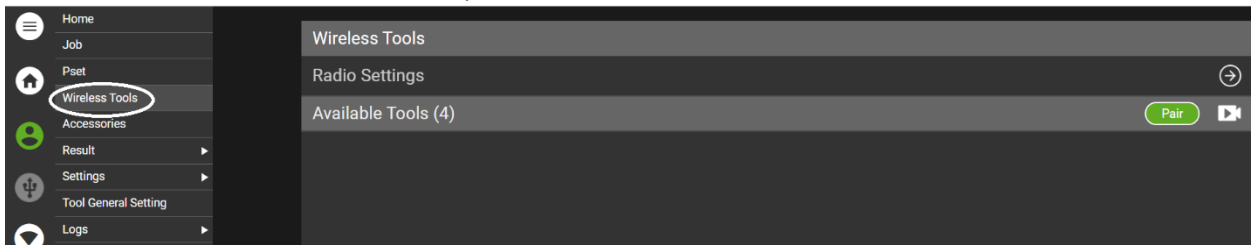
- d. Select Radio Settings and change the Power Level to 3 or 4.



4. Plug each tool one at a time into the controller with the USB cable. If you see a message about a firmware mismatch, select the Update button to update the tool firmware. You will have to do this for the Display and MCE firmware.



- Once the firmware is updated on all tools, go to the Wireless Tools screen. You will see the number of Available Tools that can be paired to the controller. In this case 4.

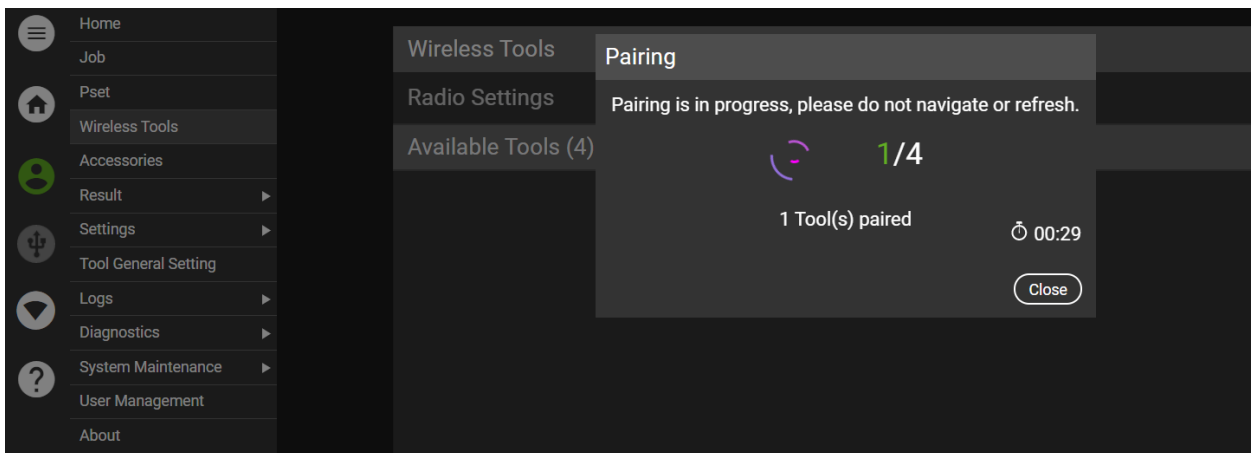


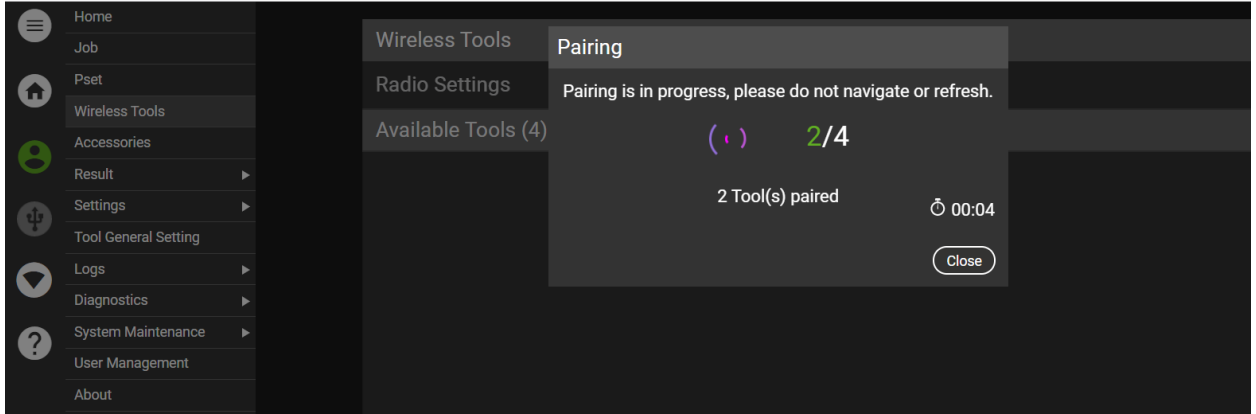
- Select the Pair button. For QX Series tools press the check button and left arrow key simultaneously.

For QX Connect Series tools, place the tool in the controller mode.



The controller will Pair to each tool.





7. For the above example, I paired 2 tools to my 4 to 1 controller. They will now show as Paired on the Wireless Tools screen. The screen also shows the number of Available Tools as 2 that can still be paired to the controller.

